

The street lighting contract has been signed.

Miss Mary Little is home for the holidays,—from Smith College.

H. E. Andrews and daughter are spending a fortnight at Bryn Mawr, Pa.

Peter Luca is expected home tomorrow, from Cornell University, for the holidays.

The ministers are planning union meetings during the Week of Prayer, early in January.

Mr. and Mrs. Winfred Blake are visiting her father, Geo. W. Dodd, to remain over Christmas.

#### CAUGHT NAPPING.

Mother tenses to heat the band:  
She has been delayed.  
December twenty-first, and  
Not a cocky made.

This is not the worst, good land:  
Mother is distraught.  
December twenty-first, and  
Not a present bought.

This is dreadful—understand?  
Listen to me fret.  
December twenty-first, and  
Nothing started yet.

Thomas Vernier, from Texas, spent a week or more with his mother,—his first visit for some years.

The Poultry Association's big store building is approaching completion, and makes an imposing appearance.

Anton Pier entered some of his high-grade S. C. White Leghorns at the Camden Poultry Show, this week, and received second prize for a cock.

#### Christmas Exercises.

Lest our readers forget, we repeat the Christmas announcements, with a few changes.

The Baptists will entertain their friends next Thursday evening (our reporter being too previous in saying Monday evening), to celebrate Christmas. Their programme, entitled "Our Saviour's Birthday," is unusually good, carrying with it the true spirit of the day, instead of the light Santa Claus jingles too common in programmes. Appropriate music to-morrow.

The Presbyterians will, Sunday, 22nd, during Sunday School hour, have appropriate exercises. On Monday afternoon, 23rd, at three o'clock, entertainment by Elementary Department. Parents invited. Wednesday eve, at 7.30, a Xmas social. Everybody invited.

The Universalists will have an appropriate sermon Sunday morning, 22nd. In the evening, service of story and song, entitled "In Quest of the King." A tree and a few exercises by choir and school will be given some evening during the week.

The Methodist School, with Miss Nettie Monfort as conductor, is rehearsing Tuller & Meredith's "The Supreme Gift," for the Christmas exercises, which are to be held on Christmas night. Special music at to-morrow's services.

St. Mark's will hold the festival on Thursday evening, in the Parish House.

Amos S. VanHise greeted his Hammonton friends yesterday.

A Hammonton Italian Grange has been organized, with a good number of charter members.

People are talking about the New Year's parade. For details, watch these columns.

Mr. Doughty is able to attend to business, at his office, though still suffering from the effects of his accident.

Members of the Rizzotte family tender thanks for many kindnesses received during sickness of wife and mother.

An agent will be at Rahere's garage on Thursday, Jan. 2nd, to issue drivers' and automobile licenses. One day only.

It's just four days to Christmas.  
The counting makes me blue:  
In just four days  
She has, she says,  
A million things to do.

Start the new year right,—mark your calendar for Jan. 15th, and reserve it for a treat from Hammonton Grange, P. of H.

Mrs. W. A. Sooy was badly scalded about the neck and face, Tuesday, while removing a kettle of hot water from the stove.

The P. O. S. of A. benefit, on Wednesday night, "Custer's Last Fight," at Eagle Theatre, was a success, in spite of bad weather.

Moderate weather this week,—most too warm for the season, not conducive to health during first three days. Wednesday brought us rain. Thursday dawned damp and cloudy; a strong wind blew after nine o'clock,—colder. Friday was cold.

#### Fire Laddies Elect.

Volunteer Fire Company, No. 1, re-elected their old officers, Monday evening, as follows:

President, Manley Austin  
Vice-President, A. L. Jackson  
Secretary, H. C. Leonard  
Treasurer, W. O. Hoyt  
Foreman, Louis Speyce  
Asst. Foreman, W. O. Hoyt  
Trustees, H. C. Doughty, Thos. Skinner, A. L. Jackson  
Representative to Relief Association, Dr. J. C. Bitler.

Miss Mamie Eckhardt, accompanied by Miss Elsie Ford, a State Normal School friend, sailed from New York Tuesday night, to spend the holidays in Bermuda.

Come to the New Year's eve chicken supper, in Little's vacant store. Hours, 5 to 8. A fine supper for 35 cents, served by the men of the Presbyterian Church.

The Independent Fire Company, No. 2, is nearly out of debt,—with a little help would be free by the first of the year. Some one suggested that both companies have a joint celebration.

Hammonton will contribute but five to the January petit jury,—Robert H. Goff, Edw. H. White, Fred Nicolai, Walter B. Chew and Wm. B. Phillips. Mullica will send Jesse R. Abbott.

The Italian Colony of Fruit Growers did a prosperous business the past year. Their gross sales amounted to \$108,000, of which \$50,000 worth of produce were sold here in town, to agents.

St. Mark's Church, Fourth Sunday in Advent. 7.30 a. m., Holy Communion; at 10.30, Morning Prayer; 11.45, Sunday School; 7.30, evening Prayer.

Christmas Day, 6.00 a. m., Holy Communion; 7.00 Morning Prayer; 7.30 and 10.30, Holy Communion; 5.00, Evening Prayer.

St. Stephen's, St. John's and Holy Innocents' Days, 7.00 a. m., Morning Prayer; 7.30, Holy Communion; at 5.00 p. m., Evening Prayer.

Schools closed yesterday, with appropriate exercises, to re-open January 2nd.

The true spirit of Christmas will prevail in the services of the M. E. Church to-morrow. At 9.30, a service of praise will welcome you. The hour of 10.30 will present a program of Christmas music and sermon. Mrs. A. L. Jackson, organist, will render "Christmas night has come again," "The Holy Child," and "Joy to the world." The choir, under the able direction of Miss Nettie Monfort, will render "He shall feed his flock." Miss Monfort will be the soloist, and sing "There were Shepherds." At 7.30, the choir will render "Thy Light is come." At noon, Bible School. Jr. League at 3.00; Epworth League, 6.45. Subject of Pastor Shaw's morning discourse, "The King's Birthday." Subject at 7.30, "Your Christmas Tree." Prayer service Thursday evening, at 7.30. Literary and Social Club Friday eve, 8 o'clock. Special Christmas service on Wednesday morning, at six o'clock. Everybody is invited to all these services.

#### Fire Alarm on Thursday

C. E. Fowler's old buildings, formerly used for a blacksmith shop and a laboratory, near the Park, were burned on Thursday afternoon,—the cause of the fire being unknown.

It was about 1.15 when neighbors turned in the alarm, and the firemen hastened thither with the chemical engine. Though too late to save Fowler's buildings, they prevented the fire spreading to the Park property, where many small fires were started in the grass, blown by the fierce wind. It is thought that someone carelessly dropped a match inside one of the buildings.

This was the first alarm since June 5th,—the Vernier cold-frame.

Christmas Sunday at the Presbyterian Church. At 10.30 a. m., theme, "The First Christmas sermon," with appropriate Christmas music. At noon, an interesting programme by the scholars of the Sabbath School. A C. E. Christmas meeting at 6.45, led by Miss Charlotte Rogers. Evening theme, at 7.30, "Christmas—a window," followed by the cantata, "At Bethlehem." Thursday eve, prayer meeting at 7.30.

Major E. W. Coffin died last week Thursday, December 12th, in Camden, aged 88 years. He was born in Hammonton in 1824, and later succeeded his father in control of the glass works at the foot of the Lake. He was long general freight agent of the Camden & Atlantic Railroad, and well known here.

## Bank Bros.

We wish you all a Merry Christmas!

## Bank Bros.

Santa Claus is in Toyland every day.

Hundreds of people who visited our Toy Department were delighted to find such a complete collection of Toys, and marked at such low prices.

Come, and bring the Children!



#### A Catalogue of Items suitable to give a man.

Dress Shirts, 48 c to \$1.50  
Scores of new patterns to choose from.

Wool Flannel Shirts, \$1 to \$3 with attached collars, in gray, brown or blue.

Sweater Coats, 85 c to \$7, any color or style you may want.

Umbrellas, 45 c to \$4.50  
Some new styles that can be taken apart and put in a suit case.

Leather Traveling Bags, \$3.50 to \$10, made to stand hard wear, the kind that looks right after long use.

Traveling Bags, 75 c to \$2.50

Leather Suit Cases, \$3.50 to \$6.50

Suit Cases, 75 c to \$2.25

Dress Gloves, \$1 to \$2.50  
Driving Gloves, 48 c to \$3—lined or unlined

Four-in-hand Neckwear, 25 cents to \$1  
new styles and new patterns

Ready-made Neckwear, 9 cents to 50 cents  
Handkerchiefs, with initials or plain, of cambric or pure linen,—a complete stock. 5 cents to 50 cents

Holeproof Hose, \$1.50 per box,—guaranteed for six months

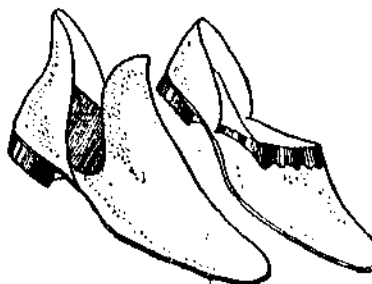
#### Hand-bags.

The most beautiful collection of Handbags are here, in scores of new styles. They range in price from 50 cents to \$1, \$1.25, \$1.50, \$2, and gradually go up to \$4, \$5 and \$6. We assure you of the value at each and every price.

Hose,—a complete stock, from 9 cents to the very fine imported silk at \$1.50 a pair.

A box of Holeproof Hose, guaranteed for six months, for \$2.

Sweaters, in all colors, 85 cents to \$7.



House Slippers and Juliettes, a useful present.

Men's Slippers in tan and black, 48 cents to \$1.50

Juliettes, in tan and black, 95 cents to \$1.50

Cloth Slippers, 50 cents to \$1.25

Women's Felt Juliettes, 75 cents to \$1.50, in black, gray or red.

Little Children's Felt Juliettes, 65 c, 85 c, and 95 c

#### Furs,—

The most useful gift.  
Scarfs, \$1.25 to \$7.50  
Muffs, \$3 to \$10  
Muff and Scarf, \$4.50 to \$22.50

Umbrellas, 45 c to \$4.50

#### A List of Useful Gifts for Ladies.

Shirt Waist, in plain tailored or lace trimmed. Scores of new styles just arrived from the factory.

See the new Robespierre waists,—plain white, cream and white, with black.

Prices, \$1, \$1.25, \$1.50, and \$2.

Imported Lace Collars and Sets will make a very useful gift for a lady.

We show the most elaborate collection ever shown. They range in price from 48 cts to 75 c, 95 c, \$1.25, \$1.50, and gradually go up to \$3.50

Fancy Collars in boxes,—10 cents to 48 cents

Kid Gloves in all colors,—\$1 to \$2

Woolen and Chamois Gloves, 23 c to 48 c.

Handkerchiefs,—plain or fancy embroidered, 5 c to 50 c

Rubber Footwear for men, women and children.



Copyright Hart Schaffner & Marx

You want Santa Claus to stop here at this store on his way to your chimney and Christmas tree.

There are more things here that men and young men want for Christmas than you have any idea of; better come and see.

There are only a few days left before Christmas.

Our facilities for serving you are better than ever.

If you decided to give a Suit or an Overcoat, there are hundreds here to select from.

They range in price from \$7.50 to \$22.50, and at each and every price we are prepared to give you the best values.

Trousers from 95 cents to \$5.

Bank Brothers' Store, Hammonton, N. J.







Next week  
may be  
Too Late!



## The PRUDENTIAL

Founded by John F. Dryden  
Pioneer of Industrial Insurance  
in America.

HAY!  
Walnut Nook Fruit and Stock Farm  
**J. B. WESCOAT**  
Dealer in Hay, Salt, Black Grass  
And Bedding Hay. Also a few Sheds.  
Drop a postal or phone. Bell phone 67.

**CHAS. T. THURSTON**  
Practical  
Plumber  
and Gas Fitter

Estimates cheerfully furnished.  
Prompt Attention to all kinds of  
Plumbing work will prevent  
large bills in the end.

Hammononton, N. J.  
Local Phone 67

Fire Insurance at Cost,  
**THE CUMBERLAND**  
Mutual  
Fire Insurance Co.

Will insure your property at less cost  
than elsewhere. Reason: operating ex-  
penses light; no loading of premium for  
profits. \$100,000 paid in dividends.  
For particulars, see  
**Wayland DePuy, Agt.**  
Correspondence and policy delivery  
Hammononton, N. J.

**Miss BERTHA TWOMEY**  
Notary Public  
Com. of Deeds

Business in these lines properly and  
promptly attended to.  
Depositions will be taken.

## South Jersey Republican

Issued every Saturday morning  
Entered in Hammononton Post-office as second-class matter by  
FOY & SON, PUBLISHERS  
Orcutt E. Hoyt William O. Hoyt  
Subscription Price: \$1.25 per year, \$1.00 in Atlantic County. Three cents per copy.  
On sale at office, and at King's News Room  
Advertising rates on application. Local Phone—532, 578, 1005.

SATURDAY, DECEMBER 21, 1912

## A Merry Christmas To You All!

Do your shopping early in the day, if you haven't completed it yet. You will not only be merciful to the clerks, but you'll see what you are buying.

No, we newspaper men were not responsible for Thursday's fire, to create news; though one of them sent in the alarm over the wire, and the other one rang the big bell.

If you have a family reunion, any company, or you are going away to spend Christmas, just remember Local Phone 532.

Don't forget, the Post Office will close at ten o'clock, Wednesday morning, and open again from 5.30 to 6.30 p. m. The Bank, Trust Company, and business houses generally, will not open that day. This office will receive friends only at morning and evening mail time.

If you have not done so already, send your outgoing postals and parcels to-day, to ensure their delivery before Christmas.

We publish a real estate adv. this week, listing the base-ball grounds for sale. Shouldn't this belong to the schools? It is the only play-ground near Central; and if deprived of that plot, where could they play base-ball? A disinterested party may buy it, and cut it up into building lots.

## CHRISTMAS. WHY?

Nineteen hundred and twelve years ago, so saith the record, there was a midnight sunburst in the land of Judea, and a song was sung by angels, "Glory to God in the highest, and on earth peace among men of good pleasure." From that time down to the present, there has been sunshine and song in the world. Why? A Babe was born that night in Bethlehem. But the birth of a babe was not phenomenal. One can imagine the birth of the first babe, just outside the gate of Paradise, created a sensation in the small and exclusive circle of human society. Eve, the mother of us all, exclaimed, "I have gotten a man from the Lord." As the race grew, the novelty of a new baby lost some of its interest. But this was an unusual baby. That is why the angels sang. In the beginning the morning stars sang together and the sons of God shouted for joy over the new creation as it unfolded under the fiat of Jehovah. This Babe was the beginning of a new creation and again the angels sang.

But why do men of good-will keep on singing through the centuries? Because this Babe keeps on being born in the hearts of men of good will, and every time He is born again there is a sunburst in the darkness of a human soul and a songburst in both earth and heaven. The angels sang because of their joy over one sinner that repented, and all who have received the Babe into their hearts sing in response. There is a continuous, antiphonal jubilation going on between earth and heaven, because every moment some heart opens to let the Babe in.

This Babe is the inspiration of song. What is a song? It is not an anthem. It is not a poem. It is always poetic, but it is not necessarily poetry. It is a spontaneous expression of emotions of the highest order. It makes its own tune and flings itself out on the air because it can't help it. Songs are born in times of great revolutionary moment in the secular and religious world. The birth of Christ was the most revolutionary event in the world's history. Light and darkness clashed and light overcame darkness. When the light flashed, the song burst. Every time the light flashes, there is a new impulse to sing. Why do we sing to-day? Because the deepest, sanest yearnings of the human soul are met in the Babe of Bethlehem. This Babe exalts humanity. Human emotions are refined. Human thought is elevated. Human speech is purified. Human needs are made divine. Human nature is quickened, readjusted and glorified.

This Babe has projected new ideas into the monotony of human thought. God is our Father; all we are brethren. This Babe came that selfishness might go. He is an omnipresent, everlasting evangel of good-will. If His name were not Jesus, we would call Him Atlas, for the government is upon His shoulders, and He lifts the whole fabric of human society to the highest level and bathes it in the light of life. We live in better homes, we wear better clothes, we eat better food and live better lives and have a good hope of life eternal because of Him.

The Babe of Bethlehem is God's greatest gift to humanity; therefore we keep the festival in honor of His birth. Lift up your heads and hail Him King: open wide your hearts and welcome Him to His throne.

Adapted by the Republican, from Leila's.

Be careful and avoid fire, next Wednesday. Better not light the tree candles.

We expect to have an article of interest to every reader, in our next issue.

## Hemingway's

Schubert PIANO Ware-rooms



Does \$100 Look Good to You?

I will save you that much and more if you are looking for a piano or player piano. What's the use of buying a second-hand piano when you can have a new one of better grade at the same price. What's the use of buying cheaper quality, when you can have the best direct from the factory at the same cost, or less?

Don't be old-fashioned and say, "I don't see how it can be done." Look into my proposition and see for yourself. Just because pianos have never been sold here before on this plan and at such low prices, is no reason they cannot be. I save you the middleman's profit.

**Specials for Christmas Buyers**  
\$175.....other dealers ask.....\$275  
\$180.....other dealers ask.....\$280  
\$185.....other dealers ask.....\$285  
\$190.....other dealers ask.....\$290  
\$195.....other dealers ask.....\$295  
\$200.....other dealers ask.....\$300  
\$205.....other dealers ask.....\$305  
\$210.....other dealers ask.....\$310  
\$215.....other dealers ask.....\$315  
\$220.....other dealers ask.....\$320  
\$225.....other dealers ask.....\$325  
\$230.....other dealers ask.....\$330  
\$235.....other dealers ask.....\$335  
\$240.....other dealers ask.....\$340  
\$245.....other dealers ask.....\$345  
\$250.....other dealers ask.....\$350  
\$255.....other dealers ask.....\$355  
\$260.....other dealers ask.....\$360  
\$265.....other dealers ask.....\$365  
\$270.....other dealers ask.....\$370  
\$275.....other dealers ask.....\$375  
\$280.....other dealers ask.....\$380  
\$285.....other dealers ask.....\$385  
\$290.....other dealers ask.....\$390  
\$295.....other dealers ask.....\$395  
\$300.....other dealers ask.....\$400  
\$305.....other dealers ask.....\$405  
\$310.....other dealers ask.....\$410  
\$315.....other dealers ask.....\$415  
\$320.....other dealers ask.....\$420  
\$325.....other dealers ask.....\$425  
\$330.....other dealers ask.....\$430  
\$335.....other dealers ask.....\$435  
\$340.....other dealers ask.....\$440  
\$345.....other dealers ask.....\$445  
\$350.....other dealers ask.....\$450  
\$355.....other dealers ask.....\$455  
\$360.....other dealers ask.....\$460  
\$365.....other dealers ask.....\$465  
\$370.....other dealers ask.....\$470  
\$375.....other dealers ask.....\$475  
\$380.....other dealers ask.....\$480  
\$385.....other dealers ask.....\$485  
\$390.....other dealers ask.....\$490  
\$395.....other dealers ask.....\$495  
\$400.....other dealers ask.....\$500  
\$405.....other dealers ask.....\$505  
\$410.....other dealers ask.....\$510  
\$415.....other dealers ask.....\$515  
\$420.....other dealers ask.....\$520  
\$425.....other dealers ask.....\$525  
\$430.....other dealers ask.....\$530  
\$435.....other dealers ask.....\$535  
\$440.....other dealers ask.....\$540  
\$445.....other dealers ask.....\$545  
\$450.....other dealers ask.....\$550  
\$455.....other dealers ask.....\$555  
\$460.....other dealers ask.....\$560  
\$465.....other dealers ask.....\$565  
\$470.....other dealers ask.....\$570  
\$475.....other dealers ask.....\$575  
\$480.....other dealers ask.....\$580  
\$485.....other dealers ask.....\$585  
\$490.....other dealers ask.....\$590  
\$495.....other dealers ask.....\$595  
\$500.....other dealers ask.....\$600  
\$505.....other dealers ask.....\$605  
\$510.....other dealers ask.....\$610  
\$515.....other dealers ask.....\$615  
\$520.....other dealers ask.....\$620  
\$525.....other dealers ask.....\$625  
\$530.....other dealers ask.....\$630  
\$535.....other dealers ask.....\$635  
\$540.....other dealers ask.....\$640  
\$545.....other dealers ask.....\$645  
\$550.....other dealers ask.....\$650  
\$555.....other dealers ask.....\$655  
\$560.....other dealers ask.....\$660  
\$565.....other dealers ask.....\$665  
\$570.....other dealers ask.....\$670  
\$575.....other dealers ask.....\$675  
\$580.....other dealers ask.....\$680  
\$585.....other dealers ask.....\$685  
\$590.....other dealers ask.....\$690  
\$595.....other dealers ask.....\$695  
\$600.....other dealers ask.....\$700  
\$605.....other dealers ask.....\$705  
\$610.....other dealers ask.....\$710  
\$615.....other dealers ask.....\$715  
\$620.....other dealers ask.....\$720  
\$625.....other dealers ask.....\$725  
\$630.....other dealers ask.....\$730  
\$635.....other dealers ask.....\$735  
\$640.....other dealers ask.....\$740  
\$645.....other dealers ask.....\$745  
\$650.....other dealers ask.....\$750  
\$655.....other dealers ask.....\$755  
\$660.....other dealers ask.....\$760  
\$665.....other dealers ask.....\$765  
\$670.....other dealers ask.....\$770  
\$675.....other dealers ask.....\$775  
\$680.....other dealers ask.....\$780  
\$685.....other dealers ask.....\$785  
\$690.....other dealers ask.....\$790  
\$695.....other dealers ask.....\$795  
\$700.....other dealers ask.....\$800  
\$705.....other dealers ask.....\$805  
\$710.....other dealers ask.....\$810  
\$715.....other dealers ask.....\$815  
\$720.....other dealers ask.....\$820  
\$725.....other dealers ask.....\$825  
\$730.....other dealers ask.....\$830  
\$735.....other dealers ask.....\$835  
\$740.....other dealers ask.....\$840  
\$745.....other dealers ask.....\$845  
\$750.....other dealers ask.....\$850  
\$755.....other dealers ask.....\$855  
\$760.....other dealers ask.....\$860  
\$765.....other dealers ask.....\$865  
\$770.....other dealers ask.....\$870  
\$775.....other dealers ask.....\$875  
\$780.....other dealers ask.....\$880  
\$785.....other dealers ask.....\$885  
\$790.....other dealers ask.....\$890  
\$795.....other dealers ask.....\$895  
\$800.....other dealers ask.....\$900  
\$805.....other dealers ask.....\$905  
\$810.....other dealers ask.....\$910  
\$815.....other dealers ask.....\$915  
\$820.....other dealers ask.....\$920  
\$825.....other dealers ask.....\$925  
\$830.....other dealers ask.....\$930  
\$835.....other dealers ask.....\$935  
\$840.....other dealers ask.....\$940  
\$845.....other dealers ask.....\$945  
\$850.....other dealers ask.....\$950  
\$855.....other dealers ask.....\$955  
\$860.....other dealers ask.....\$960  
\$865.....other dealers ask.....\$965  
\$870.....other dealers ask.....\$970  
\$875.....other dealers ask.....\$975  
\$880.....other dealers ask.....\$980  
\$885.....other dealers ask.....\$985  
\$890.....other dealers ask.....\$990  
\$895.....other dealers ask.....\$995  
\$900.....other dealers ask.....\$1000

**The Hemingway Piano Company**  
2616 Atlantic Ave.  
Atlantic City, New Jersey.

**DR. J. A. WAAS,**  
Dentist

Congley Building, Hammononton

Correct Glasses

Save Nerve Energy!

**DR. L. A. YOUNG**

Ballard Building, Room 8.

Mondays, 10 a. m. to 8 p. m.

(Your eyes strengthened with glasses)

912

Poor old year! he's marked for laughter. "Tear his lead his sudden bend, and wearily watch him totter feebly to his destined end. Soon, as soon he will be lying where Time's scythe has dig- ged, and the angels will be at his writing—poor old weary Nine- teen Twelve!

Recently so strong and burly, now we see him weak, decayed, while we do our shopping early in the busy haunts of trade. Soon Time's funeral director this old lanky year will shelve, and he'll be as dead as Hector, poor old rickety Nineteen Twelve!

And it brings us somewhat near to our own appointed end; and we see, now, somewhat clearer, shadows of the dusk descend; and our locks, once bright and curly, now begin to thin and fade, as we do our shopping early in the clang- ing, r-r-rs of trade.

Now our eyes are somewhat dimmer, and we long to wear a wig, and our limbs are somewhat plumper, while our waists are twice as big; and our brainy tears are dropping as we view our double chins, while we wish, do our shopping ere the Christmas rush begins.

Let us therefore live correctly, being fair and just to all, doing all things circumspectly, ready for the final call; for we may fly off the surface as an axe flies from its sheath, and be planted where the turf is like the old year Nineteen Twelve.

—Walt Mason.

Mrs. Giovanna Rizzotto, died at her home, Pine Road, Hammon- ton, on Thursday, Dec. 19th, aged 66 years. Funeral services on Monday, at St. Joseph's Church. There were over seventy car- riages, led by Pizzi's band. The floral decorations were superb. A husband, four sons, and a daughter are among the mourners.

**National Farm and Home Seekers' Information Bureau, Inc.**  
Present herewith opportunities for the local investor to secure genuine real estate bargains at real sacrifice prices.

1) acres on North Third Street: the base-ball grounds, adjoining the school and church properties, consisting of four acres; three Belvedere Ave. properties, 1.5, 1.5, and 1.5 acres respectively; four fine residence prop- erties and 24 acres right in the very midst of the most real estate value in Hammononton.

2) acres on North Third Street: the base-ball grounds, adjoining the school and church properties, consisting of four acres; three Belvedere Ave. properties, 1.5, 1.5, and 1.5 acres respectively; four fine residence prop- erties and 24 acres right in the very midst of the most real estate value in Hammononton.

3) acres on North Third Street: the base-ball grounds, adjoining the school and church properties, consisting of four acres; three Belvedere Ave. properties, 1.5, 1.5, and 1.5 acres respectively; four fine residence prop- erties and 24 acres right in the very midst of the most real estate value in Hammononton.

4) acres on North Third Street: the base-ball grounds, adjoining the school and church properties, consisting of four acres; three Belvedere Ave. properties, 1.5, 1.5, and 1.5 acres respectively; four fine residence prop- erties and 24 acres right in the very midst of the most real estate value in Hammononton.

5) acres on North Third Street: the base-ball grounds, adjoining the school and church properties, consisting of four acres; three Belvedere Ave. properties, 1.5, 1.5, and 1.5 acres respectively; four fine residence prop- erties and 24 acres right in the very midst of the most real estate value in Hammononton.

6) acres on North Third Street: the base-ball grounds, adjoining the school and church properties, consisting of four acres; three Belvedere Ave. properties, 1.5, 1.5, and 1.5 acres respectively; four fine residence prop- erties and 24 acres right in the very midst of the most real estate value in Hammononton.

7) acres on North Third Street: the base-ball grounds, adjoining the school and church properties, consisting of four acres; three Belvedere Ave. properties, 1.5, 1.5, and 1.5 acres respectively; four fine residence prop- erties and 24 acres right in the very midst of the most real estate value in Hammononton.

8) acres on North Third Street: the base-ball grounds, adjoining the school and church properties, consisting of four acres; three Belvedere Ave. properties, 1.5, 1.5, and 1.5 acres respectively; four fine residence prop- erties and 24 acres right in the very midst of the most real estate value in Hammononton.

9) acres on North Third Street: the base-ball grounds, adjoining the school and church properties, consisting of four acres; three Belvedere Ave. properties, 1.5, 1.5, and 1.5 acres respectively; four fine residence prop- erties and 24 acres right in the very midst of the most real estate value in Hammononton.

10) acres on North Third Street: the base-ball grounds, adjoining the school and church properties, consisting of four acres; three Belvedere Ave. properties, 1.5, 1.5, and 1.5 acres respectively; four fine residence prop- erties and 24 acres right in the very midst of the most real estate value in Hammononton.

11) acres on North Third Street: the base-ball grounds, adjoining the school and church properties, consisting of four acres; three Belvedere Ave. properties, 1.5, 1.5, and 1.5 acres respectively; four fine residence prop- erties and 24 acres right in the very midst of the most real estate value in Hammononton.

12) acres on North Third Street: the base-ball grounds, adjoining the school and church properties, consisting of four acres; three Belvedere Ave. properties, 1.5, 1.5, and 1.5 acres respectively; four fine residence prop- erties and 24 acres right in the very midst of the most real estate value in Hammononton.

13) acres on North Third Street: the base-ball grounds, adjoining the school and church properties, consisting of four acres; three Belvedere Ave. properties, 1.5, 1.5, and 1.5 acres respectively; four fine residence prop- erties and 24 acres right in the very midst of the most real estate value in Hammononton.

14) acres on North Third Street: the base-ball grounds, adjoining the school and church properties, consisting of four acres; three Belvedere Ave. properties, 1.5, 1.5, and 1.5 acres respectively; four fine residence prop- erties and 24 acres right in the very midst of the most real estate value in Hammononton.

15) acres on North Third Street: the base-ball grounds, adjoining the school and church properties, consisting of four acres; three Belvedere Ave. properties, 1.5, 1.5, and 1.5 acres respectively; four fine residence prop- erties and 24 acres right in the very midst of the most real estate value in Hammononton.

16) acres on North Third Street: the base-ball grounds, adjoining the school and church properties, consisting of four acres; three Belvedere Ave. properties, 1.5, 1.5, and 1.5 acres respectively; four fine residence prop- erties and 24 acres right in the very midst of the most real estate value in Hammononton.

17) acres on North Third Street: the base-ball grounds, adjoining the school and church properties, consisting of four acres; three Belvedere Ave. properties, 1.5, 1.5, and 1.5 acres respectively; four fine residence prop- erties and 24 acres right in the very midst of the most real estate value in Hammononton.

Half-a-Cent-a-Word Advs.

No charge less than ten cents.

Each figure, initial, and name counts one word.

Real Estate.

SEVEN room house for sale. "Half acre" more of land; water and gas. Fourth St., near Delaware. Apply to J. W. Haddock.

FOR SALE—Nearly two acres of ground. 1700 foot on Central Avenue.

Apply to J. W. Haddock.

TWO Houses for sale on Central Avenue.

Apply to J. W. Haddock.

FOR SALE—The Grand place on the back of the house, 10 room house, stable, incubator and 2000 ft. of land. 2000 ft. of land.

Apply to J. W. Haddock.

FOR SALE—Chicken farm, 10 acres—5 room house, bath, wash house, stable, incubator and 2000 ft. of land. 2000 ft. of land.

Apply to J. W. Haddock.

FOR SALE—Chicken farm, 10 acres—5 room house, bath, wash house, stable, incubator and 2000 ft. of land. 2000 ft. of land.

Apply to J. W. Haddock.

FOR SALE—Chicken farm, 10 acres—5 room house, bath, wash house, stable, incubator and 2000 ft. of land. 2000 ft. of land.

Apply to J. W. Haddock.

FOR SALE—Chicken farm, 10 acres—5 room house, bath, wash house, stable, incubator and 2000 ft. of land. 2000 ft. of land.

Apply to J. W. Haddock.

FOR SALE—Chicken farm, 10 acres—5 room house, bath, wash house, stable, incubator and 2000 ft. of land. 2000 ft. of land.

Apply to J. W. Haddock.

FOR SALE—Chicken farm, 10 acres—5 room house, bath, wash house, stable, incubator and 2000 ft. of land. 2000 ft. of land.

Apply to J. W. Haddock.

FOR SALE—Chicken farm, 10 acres—5 room house, bath, wash house, stable, incubator and 2000 ft. of land. 2000 ft. of land.

Apply to J. W. Haddock.

FOR SALE—Chicken farm, 10 acres—5 room house, bath, wash house, stable, incubator and 2000 ft. of land. 2000 ft. of land.

Apply to J. W. Haddock.

FOR SALE—Chicken farm, 10 acres—5 room house, bath, wash house, stable, incubator and 2000 ft. of land. 2000 ft. of land.

Apply to J. W. Haddock.

FOR SALE—Chicken farm, 10 acres—5 room house, bath, wash house, stable, incubator and 2000 ft. of land. 2000 ft. of land.

Apply to J. W. Haddock.

FOR SALE—Chicken farm, 10 acres—5 room house, bath, wash house, stable, incubator and 2000 ft. of land. 2000 ft. of land.

Apply to J. W. Haddock.

FOR SALE—Chicken farm, 10 acres—5 room house, bath, wash house, stable, incubator and 2000 ft. of land. 2000 ft. of land.

Apply to J. W. Haddock.

FOR SALE—Chicken farm, 10 acres—5 room house, bath, wash house, stable, incubator and 2000 ft. of land. 2000 ft. of land.

Apply to J. W. Haddock.

FOR SALE—Chicken farm, 10 acres—5 room house, bath, wash house, stable, incubator and 2000 ft. of land. 2000 ft. of land.

Apply to J. W. Haddock.

FOR SALE—Chicken farm, 10 acres—5 room house, bath, wash house, stable, incubator and 2000 ft. of land. 2000 ft. of land.

Apply to J. W. Haddock.

FOR SALE—Chicken farm, 10 acres—5 room house, bath, wash house, stable, incubator and 2000 ft. of land. 2000 ft. of land.

Apply to J. W. Haddock.

FOR SALE—Chicken farm, 10 acres—5 room house, bath, wash house, stable, incubator and 2000 ft. of land. 2000 ft. of land.

Apply to J. W. Haddock.

FOR SALE—Chicken farm, 10 acres—5 room house, bath, wash house, stable, incubator and 2000 ft. of land. 2000 ft. of land.

Apply to J. W. Haddock.

FOR SALE—Chicken farm, 10 acres—5 room house, bath, wash house, stable, incubator and 2000 ft. of land. 2000 ft. of land.

Apply to J. W. Haddock.

FOR SALE—Chicken farm, 10 acres—5 room house, bath, wash house, stable, incubator and 2000 ft. of land. 2000 ft. of land.

Apply to J. W. Haddock.

FOR SALE—Chicken farm, 10 acres—5 room house, bath, wash house, stable, incubator and 2000 ft. of land. 2000 ft. of land.

Apply to J. W. Haddock.

FOR SALE—Chicken farm, 10 acres—5 room house, bath, wash house, stable, incubator and 2000 ft. of land. 2000 ft. of land.

Apply to J. W. Haddock.

FOR SALE—Chicken farm, 10 acres—5 room house, bath, wash house, stable, incubator and 2000 ft. of land. 2000 ft. of land.

Apply to J. W. Haddock.

FOR SALE—Chicken farm, 10 acres—5 room house, bath, wash house, stable, incubator and 2000 ft. of land. 2000 ft. of land.

Apply to J. W. Haddock.

FOR SALE—Chicken farm, 10 acres—5 room house, bath, wash house, stable, incubator and 2000 ft. of land. 2000 ft. of land.

Apply to J. W. Haddock.

FOR SALE—Chicken farm, 10 acres—5 room house, bath, wash house, stable, incubator and 2000 ft. of land. 2000 ft. of land.

Apply to J. W. Haddock.

FOR SALE—Chicken farm, 10 acres—5 room house, bath, wash house, stable, incubator and 2000 ft. of land. 2000 ft. of land.

Apply to J. W. Haddock.

FOR SALE—Chicken farm, 10 acres—5 room house, bath, wash house, stable, incub



# FASHION'S FANCIES

## WORTH MENTIONING.

Frak skirts.  
Evening muffs.  
Emboss coats.  
Velvet tea-cos.  
Tapestry effects.  
Duckies of brilliants.  
The pearl opera coat.  
The leopard skin waistcoat.  
The antique boot to match a velvet costume.  
The maline tunic listed to match the evening dress foundation.  
Hats in every possible shape and in all modern colors.

9443



9443. LADIES' HOUSE DRESS WITH SEVEN GORE SKIRT.

Percale, chambray, gingham, zale, seersucker or flannellette are most appropriate for this design. The lines are simple and the model is easy to develop. The pattern is cut in 5 sizes: 32, 34, 36, 38, 40 and 42 inches bust measure. It requires 3 yards of 44 inch material for a 38 inch size. A pattern of this illustration mailed to any address on receipt of ten cents in silver or stamps.

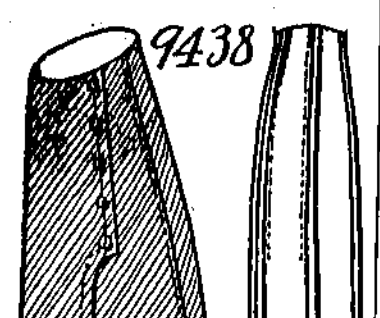
## DRAPED SKIRTS.

A Smart Carriage or Resort Rig in Black and White.

Every other skirt launched recently has a drapery concealed on Greek lines. The folds surround the figure and meet in front or at the side, beneath a couple of deep plaits, recalling organ pipes, and lending their fullness below the knees. The manner in which certain draperies cross one another in front remains one of the gown wars by the princesses in the "Arabian Nights." There is an art in raising material slightly in front, so that a couple of inches had been tucked beneath the belt. One model of this description is in black chambray, worn with a jacket in white "santa" trimmed with fox.

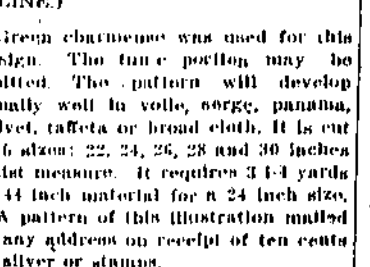
## THE COLLARETTE.

It is 17 inches long. It is nearly a third as wide. It may be finished with chiffon streamers. It usually fastens smartly under the collar. Some insist upon fastening it exactly at the back. Tuck shirring of chiffon and satin are the accepted finishing touches. These frills are very much held in. Anything spreading takes from the trimness.



9438

Green chambray was used for this design. The tunic portion may be omitted. The pattern will develop equally well in voile, organdy, muslin, or tulle. It is cut in 5 sizes: 32, 34, 36, 38, 40 and 42 inches bust measure. It requires 2 yards of 44 inch material for a 38 inch size. A pattern of this illustration mailed to any address on receipt of ten cents in silver or stamps.



9444. LADIES' THREE PIECE SKIRT WITH OR WITHOUT TUNIC (IN RAISED OR NORMAL WAIST LINE).

Green chambray was used for this design. The tunic portion may be omitted. The pattern will develop equally well in voile, organdy, muslin, or tulle. It is cut in 5 sizes: 32, 34, 36, 38, 40 and 42 inches bust measure. It requires 2 yards of 44 inch material for a 38 inch size. A pattern of this illustration mailed to any address on receipt of ten cents in silver or stamps.

## TOMATOES STUFFED WITH PINEAPPLE.

For this novel diet, peeled medium sized tomatoes, remove a thick slice from the top of each, and take out seeds and some of the pulp. Sprinkle inside with salt, liver, egg, onion, and drain for half an hour. Cut out small fresh pineapple in small cubes in all the cavities, and combine with walnut, pecan meats, in proportion of two-thirds pineapple cubes to one-third nut meats; mix with mayonnaise dressing and fill tomatoes. Garnish with halves of nut meats, and serve on lettuce leaves.

## Address all orders to PATTERN DEPARTMENT 607-609 Sansom Street PHILADELPHIA

### BEADS.

We must have them! Fashion frowned on them. But she simply had to give in. What's evening dress without gilt beads? And beads and sequins supply this glitter. No particular bead is in the lead this season. There are many sizes ranging from tiny beads to half-inch bangles. While white and silver beads predominate, colored ones are used to great advantage.

### NEW USE FOR NARROW FUR.

Fox fur "fringes" the collar of a new coat. Otoman silk and rich wool poplin are smart. Fur is the richest trimming.

### MODISH MATERIALS.

There are many sizes ranging from tiny beads to half-inch bangles. While white and silver beads predominate, colored ones are used to great advantage.

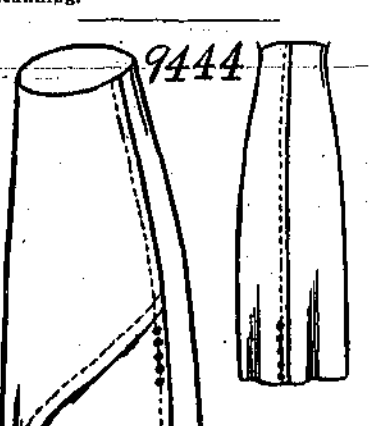


9451. LADIES' WAIST WITH VEST.

Blue chambray, with shadow lace and plaques and buttons of green satin used for this design. The model is suitable for flannel, velvet, taffeta, mesaline and other seasonable fabrics. The pattern is cut in 5 sizes: 32, 34, 36, 38, 40 and 42 inches bust measure. It requires 2 1/2 yards of 36 inch material for a 38 inch size. A pattern of this illustration mailed to any address on receipt of ten cents in silver or stamps.

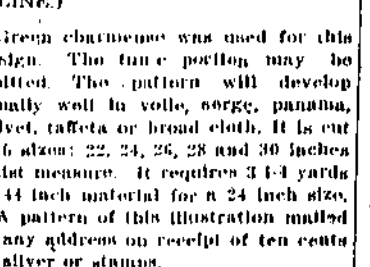
## STUNNING NEW FURS.

The tiger figures. The leopard is stunning. Clivet cat is very fascinating. Black and white fox are combined. Seal trims ermine to great advantage. Seal also trims leopard with splendid results. There are rich furs in quiet colors, but these may safely be called stunning.



9444. LADIES' THREE PIECE SKIRT WITH OR WITHOUT TUNIC (IN RAISED OR NORMAL WAIST LINE).

Green chambray was used for this design. The tunic portion may be omitted. The pattern will develop equally well in voile, organdy, muslin, or tulle. It is cut in 5 sizes: 32, 34, 36, 38, 40 and 42 inches bust measure. It requires 2 yards of 44 inch material for a 38 inch size. A pattern of this illustration mailed to any address on receipt of ten cents in silver or stamps.



9444. LADIES' THREE PIECE SKIRT WITH OR WITHOUT TUNIC (IN RAISED OR NORMAL WAIST LINE).

Green chambray was used for this design. The tunic portion may be omitted. The pattern will develop equally well in voile, organdy, muslin, or tulle. It is cut in 5 sizes: 32, 34, 36, 38, 40 and 42 inches bust measure. It requires 2 yards of 44 inch material for a 38 inch size. A pattern of this illustration mailed to any address on receipt of ten cents in silver or stamps.

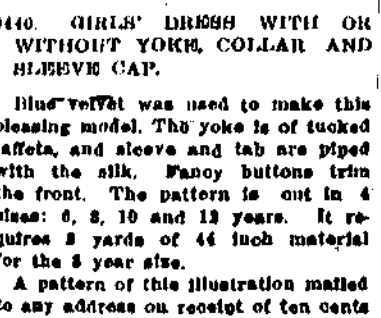
## TOMATOES STUFFED WITH PINEAPPLE.

For this novel diet, peeled medium sized tomatoes, remove a thick slice from the top of each, and take out seeds and some of the pulp. Sprinkle inside with salt, liver, egg, onion, and drain for half an hour. Cut out small fresh pineapple in small cubes in all the cavities, and combine with walnut, pecan meats, in proportion of two-thirds pineapple cubes to one-third nut meats; mix with mayonnaise dressing and fill tomatoes. Garnish with halves of nut meats, and serve on lettuce leaves.



9444. LADIES' THREE PIECE SKIRT WITH OR WITHOUT TUNIC (IN RAISED OR NORMAL WAIST LINE).

Green chambray was used for this design. The tunic portion may be omitted. The pattern will develop equally well in voile, organdy, muslin, or tulle. It is cut in 5 sizes: 32, 34, 36, 38, 40 and 42 inches bust measure. It requires 2 yards of 44 inch material for a 38 inch size. A pattern of this illustration mailed to any address on receipt of ten cents in silver or stamps.



9444. LADIES' THREE PIECE SKIRT WITH OR WITHOUT TUNIC (IN RAISED OR NORMAL WAIST LINE).

Green chambray was used for this design. The tunic portion may be omitted. The pattern will develop equally well in voile, organdy, muslin, or tulle. It is cut in 5 sizes: 32, 34, 36, 38, 40 and 42 inches bust measure. It requires 2 yards of 44 inch material for a 38 inch size. A pattern of this illustration mailed to any address on receipt of ten cents in silver or stamps.

## AFTERNOON ELEGANCE.

It has arrived. Paris has sent it. It is of white velvet. The coat on cutaway lines. The skirt is anything save full. The shawl collar and cuffs are of silk. Black agrettes trim the little white velvet top. The large flat muff is of tallness ermine, bordered with the conventional ermine. The coat top is of white angora, with facings of shiny black leather.

### MODISH MATERIALS.

There are many sizes ranging from tiny beads to half-inch bangles. While white and silver beads predominate, colored ones are used to great advantage.



9447. LADIES' SHIRT WAIST WITH TWO STYLES OF COLLAR AND SLEEVES, AND WITH OR WITHOUT YOKE PORTIONS.

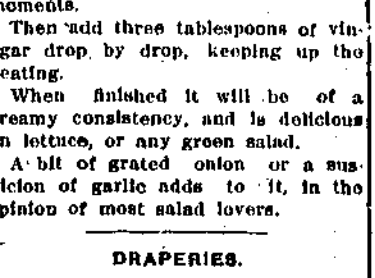
French flannel in a pretty shade of blue was used for this design. The pattern is suitable for madras, linen, velvet, silk or flannel. The yoke portions may be omitted. The pattern is cut in 5 sizes: 32, 34, 36, 38, 40 and 42 inches bust measure. It requires 3 yards of 36 inch material for a 38 inch size. A pattern of this illustration mailed to any address on receipt of ten cents in silver or stamps.

## THE SYMPATHETIC COAT.

Coats and skirts of the velours and upcared coats de chine description will also often have the skirt draped that the coat with curving and consequently sympathetic fronts was bound to be a feature.

### FOR A COLD.

A very hot lemonade the last thing at night and plenty of warm blankets will break up a cold if taken at the beginning.



9441. CHILD'S COAT.

Brown serge with velvet for trimming was used for this charming model. The deep pointed collar and revers (trimming) is very effective. The sleeves may be finished with a plain band, or rolled trimmed cuff. The pattern is cut in 4 sizes: 4, 6, 8 and 10 years. It requires 2 yards of 44 inch material for a 8 year size. A pattern of this illustration mailed to any address on receipt of ten cents in silver or stamps.



9441. CHILD'S COAT.

Brown serge with velvet for trimming was used for this charming model. The deep pointed collar and revers (trimming) is very effective. The sleeves may be finished with a plain band, or rolled trimmed cuff. The pattern is cut in 4 sizes: 4, 6, 8 and 10 years. It requires 2 yards of 44 inch material for a 8 year size. A pattern of this illustration mailed to any address on receipt of ten cents in silver or stamps.

## MILKINERY MEMS.

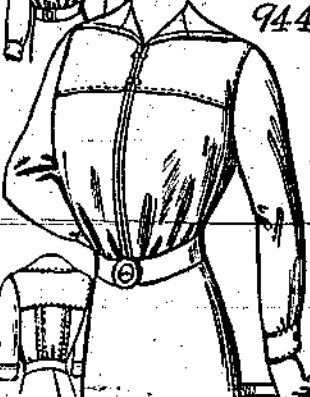
On walking hats features of fancy wings form the correct trimming, one hat is in folded cloth, velvet, or ermine or glittering mill brocade. It is rather Oriental in its effect and somewhat high crowned, finished with a wide flat bow either to the back or to the front. Heavy black ribbon or wide velvet looks crossways well on gold, brown, red or sapphire brocade, and, needless to say, such hats are worn, principally, with coats and skirts in fine cloth to match.

## AFTERNOON ELEGANCE.

It has arrived. Paris has sent it. It is of white velvet. The coat on cutaway lines. The skirt is anything save full. The shawl collar and cuffs are of silk. Black agrettes trim the little white velvet top. The large flat muff is of tallness ermine, bordered with the conventional ermine. The coat top is of white angora, with facings of shiny black leather.

### MODISH MATERIALS.

There are many sizes ranging from tiny beads to half-inch bangles. While white and silver beads predominate, colored ones are used to great advantage.



9447. LADIES' SHIRT WAIST WITH TWO STYLES OF COLLAR AND SLEEVES, AND WITH OR WITHOUT YOKE PORTIONS.

French flannel in a pretty shade of blue was used for this design. The pattern is suitable for madras, linen, velvet, silk or flannel. The yoke portions may be omitted. The pattern is cut in 5 sizes: 32, 34, 36, 38, 40 and 42 inches bust measure. It requires 3 yards of 36 inch material for a 38 inch size. A pattern of this illustration mailed to any address on receipt of ten cents in silver or stamps.

## THE SYMPATHETIC COAT.

Coats and skirts of the velours and upcared coats de chine description will also often have the skirt draped that the coat with curving and consequently sympathetic fronts was bound to be a feature.

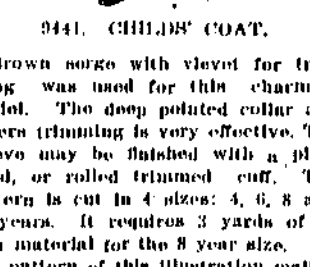
### FOR A COLD.

A very hot lemonade the last thing at night and plenty of warm blankets will break up a cold if taken at the beginning.



9441. CHILD'S COAT.

Brown serge with velvet for trimming was used for this charming model. The deep pointed collar and revers (trimming) is very effective. The sleeves may be finished with a plain band, or rolled trimmed cuff. The pattern is cut in 4 sizes: 4, 6, 8 and 10 years. It requires 2 yards of 44 inch material for a 8 year size. A pattern of this illustration mailed to any address on receipt of ten cents in silver or stamps.



9441. CHILD'S COAT.

Brown serge with velvet for trimming was used for this charming model. The deep pointed collar and revers (trimming) is very effective. The sleeves may be finished with a plain band, or rolled trimmed cuff. The pattern is cut in 4 sizes: 4, 6, 8 and 10 years. It requires 2 yards of 44 inch material for a 8 year size. A pattern of this illustration mailed to any address on receipt of ten cents in silver or stamps.

## MILKINERY MEMS.

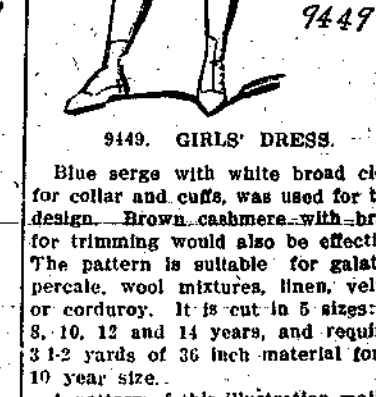
On walking hats features of fancy wings form the correct trimming, one hat is in folded cloth, velvet, or ermine or glittering mill brocade. It is rather Oriental in its effect and somewhat high crowned, finished with a wide flat bow either to the back or to the front. Heavy black ribbon or wide velvet looks crossways well on gold, brown, red or sapphire brocade, and, needless to say, such hats are worn, principally, with coats and skirts in fine cloth to match.

## ON CHRISTMAS ISLAND

THEN, as we journeyed toward the land of Hesperia, we came to an island which is called Christmas, where all good pilgrims go to spend the winter. But those who have ventured far from their homes, or have no liking to company with their fellows, sail on to the north, which is a chilly sea, or to the south, where the heat is not welcomed. For Christmas Island lies straight in the way of the honest mariner, and the stream which runs down the river through the island is warm and fragrant, whereas the shores of the island give pleasant evidence of the fact that the island is a friendly one. It is a gift greatly to be desired, as a first winter, a friend in misfortune, and by its magic are miracles wrought on those who dwell far from the kingdom of the Saint Good Will.

### MODISH MATERIALS.

There are many sizes ranging from tiny beads to half-inch bangles. While white and silver beads predominate, colored ones are used to great advantage.



9447. LADIES' SHIRT WAIST WITH TWO STYLES OF COLLAR AND SLEEVES, AND WITH OR WITHOUT YOKE PORTIONS.

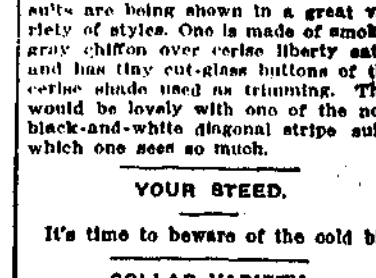
French flannel in a pretty shade of blue was used for this design. The pattern is suitable for madras, linen, velvet, silk or flannel. The yoke portions may be omitted. The pattern is cut in 5 sizes: 32, 34, 36, 38, 40 and 42 inches bust measure. It requires 3 yards of 36 inch material for a 38 inch size. A pattern of this illustration mailed to any address on receipt of ten cents in silver or stamps.

## THE SYMPATHETIC COAT.

Coats and skirts of the velours and upcared coats de chine description will also often have the skirt draped that the coat with curving and consequently sympathetic fronts was bound to be a feature.

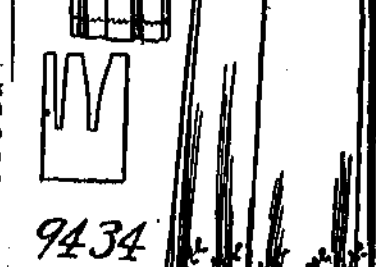
### FOR A COLD.

A very hot lemonade the last thing at night and plenty of warm blankets will break up a cold if taken at the beginning.



9441. CHILD'S COAT.

Brown serge with velvet for trimming was used for this charming model. The deep pointed collar and revers (trimming) is very effective. The sleeves may be finished with a plain band, or rolled trimmed cuff. The pattern is cut in 4 sizes: 4, 6, 8 and 10 years. It requires 2 yards of 44 inch material for a 8 year size. A pattern of this illustration mailed to any address on receipt of ten cents in silver or stamps.



9441. CHILD'S COAT.

Brown serge with velvet for trimming was used for this charming model. The deep pointed collar and revers (trimming) is very effective. The sleeves may be finished with a plain band, or rolled trimmed cuff. The pattern is cut in 4 sizes: 4, 6, 8 and 10 years. It requires 2 yards of 44 inch material for a 8 year size. A pattern of this illustration mailed to any address on receipt of ten cents in silver or stamps.

## MILKINERY MEMS.

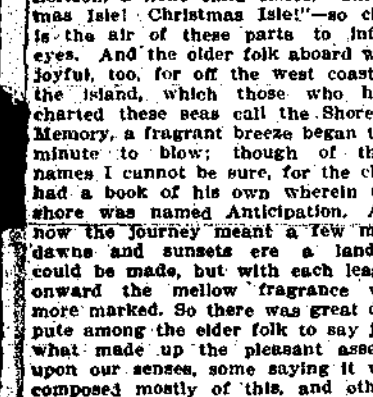
On walking hats features of fancy wings form the correct trimming, one hat is in folded cloth, velvet, or ermine or glittering mill brocade. It is rather Oriental in its effect and somewhat high crowned, finished with a wide flat bow either to the back or to the front. Heavy black ribbon or wide velvet looks crossways well on gold, brown, red or sapphire brocade, and, needless to say, such hats are worn, principally, with coats and skirts in fine cloth to match.

## ON CHRISTMAS ISLAND

THEN, as we journeyed toward the land of Hesperia, we came to an island which is called Christmas, where all good pilgrims go to spend the winter. But those who have ventured far from their homes, or have no liking to company with their fellows, sail on to the north, which is a chilly sea, or to the south, where the heat is not welcomed. For Christmas Island lies straight in the way of the honest mariner, and the stream which runs down the river through the island is warm and fragrant, whereas the shores of the island give pleasant evidence of the fact that the island is a friendly one. It is a gift greatly to be desired, as a first winter, a friend in misfortune, and by its magic are miracles wrought on those who dwell far from the kingdom of the Saint Good Will.

### MODISH MATERIALS.

There are many sizes ranging from tiny beads to half-inch bangles. While white and silver beads predominate, colored ones are used to great advantage.



9447. LADIES' SHIRT WAIST WITH TWO STYLES OF COLLAR AND SLEEVES, AND WITH OR WITHOUT YOKE PORTIONS.

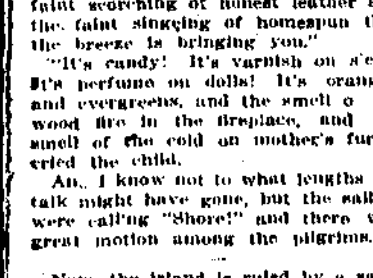
French flannel in a pretty shade of blue was used for this design. The pattern is suitable for madras, linen, velvet, silk or flannel. The yoke portions may be omitted. The pattern is cut in 5 sizes: 32, 34, 36, 38, 40 and 42 inches bust measure. It requires 3 yards of 36 inch material for a 38 inch size. A pattern of this illustration mailed to any address on receipt of ten cents in silver or stamps.

## THE SYMPATHETIC COAT.

Coats and skirts of the velours and upcared coats de chine description will also often have the skirt draped that the coat with curving and consequently sympathetic fronts was bound to be a feature.

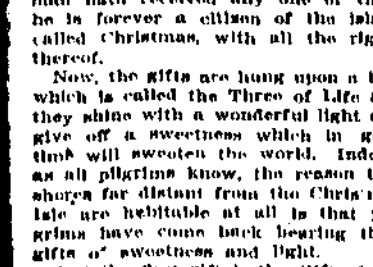
### FOR A COLD.

A very hot lemonade the last thing at night and plenty of warm blankets will break up a cold if taken at the beginning.



9441. CHILD'S COAT.

Brown serge with velvet for trimming was used for this charming model. The deep pointed collar and revers (trimming) is very effective. The sleeves may be finished with a plain band, or rolled trimmed cuff. The pattern is cut in 4 sizes: 4, 6, 8 and 10 years. It requires 2 yards of 44 inch material for a 8 year size. A pattern of this illustration mailed to any address on receipt of ten cents in silver or stamps.



9441. CHILD'S COAT.

Brown serge with velvet for trimming was used for this charming model. The deep pointed collar and revers (trimming) is very effective. The sleeves may be finished with a plain band, or rolled trimmed cuff. The pattern is cut in 4 sizes: 4, 6, 8 and 10 years. It requires 2 yards of 44 inch material for a 8 year size. A pattern of this illustration mailed to any address on receipt of ten cents in silver or stamps.

## MILKINERY MEMS.

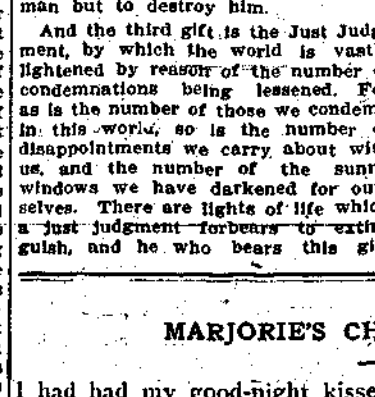
On walking hats features of fancy wings form the correct trimming, one hat is in folded cloth, velvet, or ermine or glittering mill brocade. It is rather Oriental in its effect and somewhat high crowned, finished with a wide flat bow either to the back or to the front. Heavy black ribbon or wide velvet looks crossways well on gold, brown, red or sapphire brocade, and, needless to say, such hats are worn, principally, with coats and skirts in fine cloth to match.

## ON CHRISTMAS ISLAND

THEN, as we journeyed toward the land of Hesperia, we came to an island which is called Christmas, where all good pilgrims go to spend the winter. But those who have ventured far from their homes, or have no liking to company with their fellows, sail on to the north, which is a chilly sea, or to the south, where the heat is not welcomed. For Christmas Island lies straight in the way of the honest mariner, and the stream which runs down the river through the island is warm and fragrant, whereas the shores of the island give pleasant evidence of the fact that the island is a friendly one. It is a gift greatly to be desired, as a first winter, a friend in misfortune, and by its magic are miracles wrought on those who dwell far from the kingdom of the Saint Good Will.

### MODISH MATERIALS.

There are many sizes ranging from tiny beads to half-inch bangles. While white and silver beads predominate, colored ones are used to great advantage.



9447. LADIES' SHIRT WAIST WITH TWO STYLES OF COLLAR AND SLEEVES, AND WITH OR WITHOUT YOKE PORTIONS.

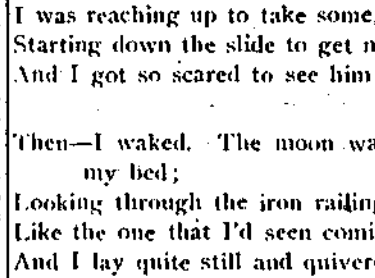
French flannel in a pretty shade of blue was used for this design. The pattern is suitable for madras, linen, velvet, silk or flannel. The yoke portions may be omitted. The pattern is cut in 5 sizes: 32, 34, 36, 38, 40 and 42 inches bust measure. It requires 3 yards of 36 inch material for a 38 inch size. A pattern of this illustration mailed to any address on receipt of ten cents in silver or stamps.

## THE SYMPATHETIC COAT.

Coats and skirts of the velours and upcared coats de chine description will also often have the skirt draped that the coat with curving and consequently sympathetic fronts was bound to be a feature.

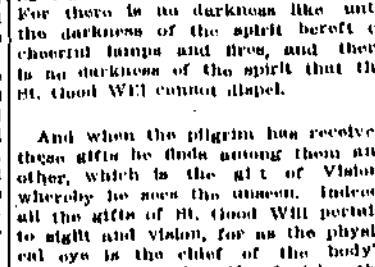
### FOR A COLD.

A very hot lemonade the last thing at night and plenty of warm blankets will break up a cold if taken at the beginning.



9441. CHILD'S COAT.

Brown serge with velvet for trimming was used for this charming model. The deep pointed collar and revers (trimming) is very effective. The sleeves may be finished with a plain band, or rolled trimmed cuff. The pattern is cut in 4 sizes: 4, 6, 8 and 10 years. It requires 2 yards of 44 inch material for a 8 year size. A pattern of this illustration mailed to any address on receipt of ten cents in silver or stamps.



9441. CHILD'S COAT.

Brown serge with velvet for trimming was used for this charming model. The deep pointed collar and revers (trimming) is very effective. The sleeves may be finished with a plain band, or rolled trimmed cuff. The pattern is cut in 4 sizes: 4, 6, 8 and 10 years. It requires 2 yards of 44 inch material for a 8 year size. A pattern of this illustration mailed to any address on receipt of ten cents in silver or stamps.

## MILKINERY MEMS.

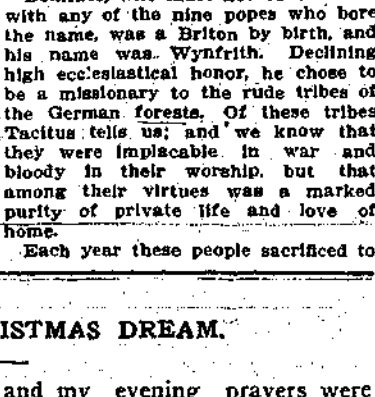
On walking hats features of fancy wings form the correct trimming, one hat is in folded cloth, velvet, or ermine or glittering mill brocade. It is rather Oriental in its effect and somewhat high crowned, finished with a wide flat bow either to the back or to the front. Heavy black ribbon or wide velvet looks crossways well on gold, brown, red or sapphire brocade, and, needless to say, such hats are worn, principally, with coats and skirts in fine cloth to match.

## ON CHRISTMAS ISLAND

THEN, as we journeyed toward the land of Hesperia, we came to an island which is called Christmas, where all good pilgrims go to spend the winter. But those who have ventured far from their homes, or have no liking to company with their fellows, sail on to the north, which is a chilly sea, or to the south, where the heat is not welcomed. For Christmas Island lies straight in the way of the honest mariner, and the stream which runs down the river through the island is warm and fragrant, whereas the shores of the island give pleasant evidence of the fact that the island is a friendly one. It is a gift greatly to be desired, as a first winter, a friend in misfortune, and by its magic are miracles wrought on those who dwell far from the kingdom of the Saint Good Will.

### MODISH MATERIALS.

There are many sizes ranging from tiny beads to half-inch bangles. While white and silver beads predominate, colored ones are used to great advantage.



9447. LADIES' SHIRT WAIST WITH TWO STYLES OF COLLAR AND SLEEVES, AND WITH OR WITHOUT YOKE PORTIONS.

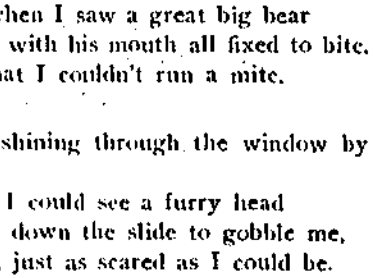
French flannel in a pretty shade of blue was used for this design. The pattern is suitable for madras, linen, velvet, silk or flannel. The yoke portions may be omitted. The pattern is cut in 5 sizes: 32, 34, 36, 38, 40 and 42 inches bust measure. It requires 3 yards of 36 inch material for a 38 inch size. A pattern of this illustration mailed to any address on receipt of ten cents in silver or stamps.

## THE SYMPATHETIC COAT.

Coats and skirts of the velours and upcared coats de chine description will also often have the skirt draped that the coat with curving and consequently sympathetic fronts was bound to be a feature.

### FOR A COLD.

A very hot lemonade the last thing at night and plenty of warm blankets will break up a cold if taken at the beginning.



9441. CHILD'S COAT.

Brown serge with velvet for trimming was used for this charming model. The deep pointed collar and revers (trimming)



**The Peoples Bank**  
OF  
**Hammonton, N. J.**  
Capital, . . . . . \$50,000  
Surplus and Undivided  
Profits, . \$50,000

Three per cent interest paid  
on time Deposits.  
Two pr. ct. interest allowed on demand  
accounts having daily balance of  
\$1000 or more.

**Safe Deposit Boxes for Rent**

M. L. JACKSON, President.  
W. J. SMITH, Vice-Pres't.  
W. R. TILTON, Cashier.

**DIRECTORS**  
M. L. Jackson J. A. Waas  
C. F. Osgood George Elvins  
Wm. J. Smith J. C. Anderson  
Sam'l Anderson W. R. Tilton  
Wm. L. Black

**W. H. Bernshouse**  
**Fire Insurance**  
Strongest Companies  
Lowest Rates  
**Conveyancing,**  
Notary Public,  
Commissioner of Deeds.  
Hammonton.

**John Prash, Jr.,**  
Funeral Director  
and Embalmer  
Twelfth St., between railroads.  
Local Phone 901. Bell 47-2

**Hammonton, N. J.**  
**Walter J. Vernier**  
**Sanitary Plumb'r**  
and  
**Gas Fitting Contractor**  
Hammonton, N. J.  
Local Phone 815

**99**  
**Reasons**  
Why it pays to build of Concrete  
First, it lasts; Second, it satisfies  
Third, it is modern;  
The other ninety six reasons you  
will find if you will examine a  
house of this kind, or if you  
will call on the  
**Hammonton Concrete Co.**

**DO YOU NOT KNOW?**  
If you do not, you can find out by a very  
little investigation that  
**The Hammonton Paint**  
Is the very best paint  
that was ever used in Hammonton.  
There are scores of buildings that you  
see every day, painted with the  
Hammonton Paint eight to twelve  
years ago, and looking well  
at the present time.  
The Hammonton Paint is sold for less  
than any other first-class paint. It has  
no equal, as it works well, covers well,  
and wears well. Sold by  
**JOS. E. TAYLOR**  
House, Sign and Carriage Painter,  
Second and Pleasant Sts.,  
Hammonton, N. J.

**Lakeview**  
**GREEN-**  
**HOUSE**  
Central Ave., Hammonton, N. J.  
Large assortment of  
Palms, Ferns, House Plants,  
Cut Flowers. Funeral Designs  
in Fresh Flowers, Wax, or Metal.  
**WATKIS & NICHOLSON,**  
Florists and Landscape Gardeners.  
Phone 1-W

Chas. Kendall was home again  
from the Navy.  
Dominick Pagano is on parole  
from the New Jersey Reformatory.  
He was sent there some months ago  
for stealing a bicycle. Benj. J.  
Crosby, Field Parole Officer, was  
here the other day, to look after  
him; and it is hoped that the  
young man will make good.

Mr. George R. Moody showed us  
a book on architecture, which is a  
well preserved old relic. It was  
published in 1798, contains the old  
style printing, with numerous illus-  
trations printed from copper-plates.  
A fly-leaf contains the name of  
"Capt. Oliver Moody, Bristol, Vt.,  
1804," the present owner's grand  
father; also, his father's name.

Christmas comes but once a year.  
As poets oft-times vow:  
And it is slated to appear  
Most any minute now.

**Un-Claimed Letters.**  
The following letters remained  
unclaimed for in the Hammonton  
Post Office on Wednesday, Dec.  
18, 1912:  
Letter to C. Bernato (2 postals) J. L.  
Mr. Ralph Eder Miss Anne Jeattens  
Mr. Joseph Miller Mr. Leon Parks  
Shady Nook Poultry Yards  
Foreign  
Nikola Wabill Ruth Louise McKinley

**THEATRICAL and BAL MASQUE**  
**COSTUMES**  
Supplied on Rental Basis.  
**WAAS & SON**  
226 N. 8th St. - Philadelphia, Pa.  
Established 1858. Catalogues Free.

**Her Mother**  
**Did Not**  
**Shop Early**



Therefore she got left, and  
this little girl was cheated of  
Christmas.  
There are few sadder sights than a  
child crying on Christmas. Let us  
hope that YOUR child may never have  
this sorrow through YOUR neglect.  
The way to avoid it is to shop early.  
It was last Christmas that this little  
girl failed to get her presents because  
her mother left buying them to the  
last moment and then fell ill. It is  
safe to say that mother has learned  
her lesson and will never procrastinate  
again.  
You should learn your lesson with-  
out being taught it by the tears of a  
child.  
Make sure by doing your  
Christmas buying today.  
Then no accident can keep  
from your little ones their  
Christmas joy.

**The Onyx Hosiery**  
for the  
**Whole Family**

In all sizes and prices.  
including SILKS  
for Ladies and Gentlemen.

For Sale at  
**MONFORT'S SHOE STORE**  
Hammonton - N. J.

**CORTRIGHT**  
**METAL SHINGLES**  
**ARE FIREPROOF**  
Storm-proof, too, because they interlock and overlap in such a way that the  
fast driving snow or rain cannot get under them.  
Best roof for country buildings, because they're safe from all the elements.  
They'll last as long as the building, and never need repair.  
For sale by George O. Bobst,  
Contractor & Builder, Hammonton, N. J.

In Chancery of New Jersey  
Between  
Donaldeo DeBonoro  
Petitioner, and  
Mary DeBonoro,  
Defendant.  
Divorce Order.  
Publication.  
The petitioner having filed his petition in  
the above cause, and process of citation hav-  
ing been issued and returned according to  
law, and it now appearing that personal  
service of process upon the defendant within  
the State could not be made:  
It is on this twenty-first day of November  
A.D. nineteen hundred and twelve, on motion  
of A. J. King, Solicitor of the petitioner,  
ordered that the said absent defendant do  
answer the petitioner's petition on or before  
the twenty-second day of January next, or  
that in default thereof, such decree be made  
against her, as the Chancellor shall think  
equitable and just.  
And it is further ordered, that the notice of  
this order prescribed by law and the rules of  
this Court, shall, within twenty days hereafter  
be published in "The South Jersey Republi-  
can," a newspaper printed at Hammonton,  
in this State, and continued therein for four  
weeks successively, at least once in every  
week; and it is further ordered, that service  
upon the defendant of the petition and of this  
order (or notice of this order), as service sub-  
stituted for personal service of process within  
the State, be made within the said twenty  
days and in the manner prescribed by the  
Rules of Court for such substituted service.  
A. J. KING, Solicitor.  
E. H. WALKER, C.

**A. H. Phillips Co.**  
**Fire Insurance.**  
—MONEY—  
FOR  
**Mortgage Loans.**  
Bartlett Building,  
Atlantic City, N. J.  
**Edw. Cathcart,**  
**Contractor & Builder**  
Jobbing promptly attended to  
300 Central Ave. Hammonton

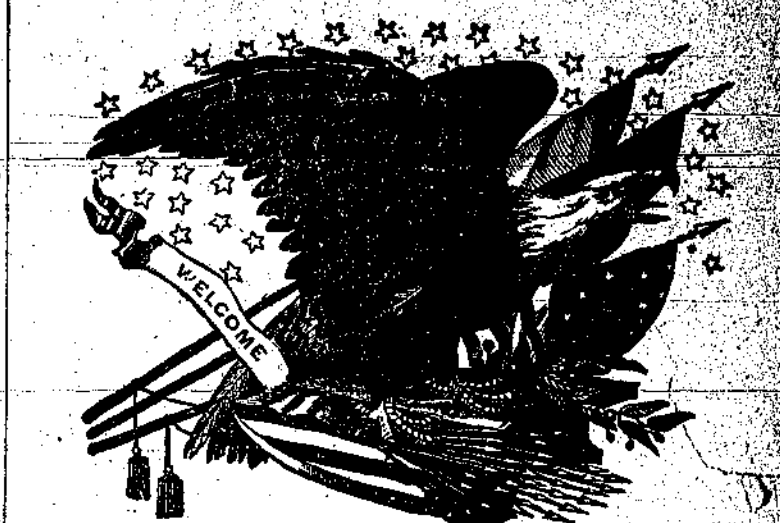
**The**  
**Hammont'n**  
**Telephone**  
Gives Best Service  
and  
Is the Cheapest!  
A. J. RIDER,  
President and Manager.  
Office in Old Fellows Building.



**Don't Bathe in a**  
**Cold Bathroom**  
It's mighty disagreeable peel-  
ing down to Nature's garb  
in a chilly bathroom. Then  
after your plunge—your pores  
opened by the warm water of  
the bath—you're in prime con-  
dition to take a good heavy  
cold if you become chilled.  
Don't do it—it's dangerous.  
**Make Your Bathroom**  
**Comfortable**  
  
**Use a Vulcan**  
**Odorless Gas**  
**Heater**  
Will make your bathroom  
comfortable in five minutes.  
No Odor. No Stuffy Feel-  
ing. Positively Sanitary.

Hammonton and  
Egg Harbor City  
Gas Company

**EAGLE THEATRE**  
**MOVING PICTURES**



Hammonton  
**SAMUEL LITKE, Proprietor**

Are you Ready for Cold Weather?

**Harry McD. Little**  
will  
Sell you a Heating or Cook Stove  
or  
Put in a Heating Plant  
Water, Steam, or Air

Plumbing done in all its branches  
Repairing properly done.

**BEAUTIFY YOUR HOMES WITH**  
  
**Cyclone Galvanized Ornamental Fence**  
And GATES.  
Specially made—fully guaranteed—durable,  
cheaper than wood.  
All sizes and styles. See samples at my office.  
**JOS. R. IMHOFF - Hammonton.**

Going out of the  
**Ready-made Clothing**  
**Business**  
I am offering  
my entire stock  
at **COST and Less!**

Take advantage of  
this money-saving  
Opportunity  
Call early, and  
have the best choice

**CHARLES GUBER**  
**TAILOR**  
Hammonton, New Jersey.