

Only six more Saturdays in this year.

Thanksgiving Day, a week from next Thursday.

Grange meeting, next Friday, November 21st.

Thirty-two more shopping days before Christmas.

Living advertisements at the Fair to-night, Bellevue Hall.

The usual services will be carried out at the Baptist Church to-morrow.

Howard M. Holland has purchased the Wm. Murphy house, on Twelfth St.

Mercury stood at twenty degrees above zero, at half-past six on Tuesday morning.

Dr. A. G. Lewis will remodel the partially burned "Maple Villa," into a neat bungalow.

Harry Pressey and wife, from McKinley, Nebraska, are welcome visitors at his mother's.

It is easy for girls to keep a secret,—demonstrated to-night at the Fair, Bellevue Hall.

Jobi Bernhardt bought the Cottage house, on Line Street, last Saturday, at Sheriff sale.

The Farmers' and Merchants' Building and Loan Association will meet next Tuesday eve.

A good hearty cold weather supper to-night, at the Civic Club Fair, Bellevue Hall, 5:30 to 8 p. m.

There will be a dance in Bellevue Hall on Thanksgiving night, for the benefit of Alumni Assoc'n.

Have your "bumps" read by Mrs. Orville Bassett at the Fair to-night, Bellevue Hall. She knows how.

Elmer DePuy raised some very fine pop-corn this year, of which a generous sample found its way to our sanctum.

Arthur Weeks, brother of Mrs. Chas. Sorden, received part of a charge of shot in his face, near his home at Weckstown.

Volunteer Fire Company meets next Monday eve. Members will square up and get in their bills for services at that meeting.

A band of gypsies has been spending ten days below the Park. Fancy baskets and fortune-telling appear to be their stock in trade.

There will be preaching services in the Universalist Church to-morrow, morning and evening. Rev. W. H. Gardner, of Nutley, N. J., will preach.

Mrs. Amos Van Hise, of New York, and Mrs. R. Frank Smith, of Atlanta, Ga., have been visiting Mrs. Edw. VanHise for a week, enjoying a pleasant time.

Ephraim Bakley, of Hammonton, and Benj. Hughes, of Woodbury, with three friends, bagged thirty-five rabbits and eighteen quail on first day of the season.

Meet an old friend who has spoken to you from most of the pulpits of Hammonton—Dr. T. Alexander Cairns. Dr. Cairns will be at Bellevue Hall, Friday, Nov. 21st.

Town Clerk Seely, up to yesterday noon, had issued 315 gunner's licenses, at \$1.15 per. This does not include two un-naturalized foreign-born resident licenses, at \$10.50 each.

"Oak-Hill Farm," a pastoral drama, will be presented by a traveling company, next Tuesday eve, 18th, in Bellevue Hall. We read strong endorsements of the play. See advertisement.

The County Vote.

The corrected election returns for Atlantic County show the following Prohibition vote: For Governor—James G. Mason, 111 votes; Senator—John W. Lynch, 179; Members of Assembly—David R. Adams, 238, Orville Bassett, 186; County Clerk—Wm. C. Fort, 150. The Republican, Democratic and Progressive vote for Governor was: Stokes, 7496; Fielder, 3636; Colby, 828. For Senator—Hodge, 7189; Shaner, 3208; Marvel, 1046. For Assembly—Godfrey, 7111; Richards, 6882; Grech, 2999; Henry, 2836; May, 849. Clerk—Parker, 6880; Seneman, 3377; Parsons, 949.

Hear the juvenile orchestra; Hammonton talent.

St. March Church, Rev. Wm. Howard Davis, Rector. Twenty-sixth Sunday after Trinity. Morning Prayer at seven o'clock. Holy Communion, 7:30 and 10:30. Sunday School, 11:45. Eve's Prayer at 7:30.

As announced last week, arrangements have been made to have the school library open to the public one night each week. The opening night will be Monday, Nov. 24th. The programme will be announced next week.

The Rod and Gun Club's fine new club rooms will be officially dedicated this evening, by the members. In the near future, they expect to entertain their friends at an evening gathering, when the general public will be invited.

If you are a Methodist, Baptist, Presbyterian or Universalist, you have heard Dr. T. Alexander Cairns, and will enjoy hearing him again, Friday, November 21st, in Bellevue Hall. The W. P. U. are giving you the treat of hearing him.

For you, the Presbyterian Ch. offers divine worship at 10:30 a.m.; theme, "Knowing Christ's Love." The study of God's Word at noon. A call to prayer at 7 p.m. Divine worship at 7:30 p.m.; theme, "The Trap." Thursday even'g, prayer and praise at 7:30.

H. F. Thompson is a practical trucker and gardener of Massachusetts. He knows New Jersey conditions. His address at the Hammonton Institute, Nov. 17th, should attract every man who is interested in the production of vegetables. Come to this meeting and learn how he solves his problems. The meeting will begin promptly at 10:30 a. m.

Owing to a general dissatisfaction in the two recent numbers of the Lyceum Course, arrangements are about completed for the return of Dr. Driver, next Wednesday evening. The doctor lectured here very acceptably last season, on "America facing the Far East." Watch for circulars. No charge will be made to ticket holders.

Owing to its success on Halloween, the committee has decided to include New Year eve for fun and merry-make, and will probably include a dance. They have elected the following officers: President, Louis Spyes; Sec'y, William H. Kuhl; Treasurer, John Dilger; Frank M. Romeo and Chris. Rehman, musical directors.

Tickets are out for a Euchre to be held in the Parish Hall of St. Mark's Church on Wednesday eve, 19th, for which many valuable prizes have been received,—both useful and ornamental. A cordial invitation is extended to the public to be present and enjoy the treat in store for them. There will be a door prize. Mrs. A. J. KING.

While gunning, Monday last, Berardo Pizzi was accidentally shot in the left eye by a companion. Dr. Chas. Cunningham took him to Jefferson Hospital, Philadelphia, where the X-ray showed that the shot had lodged in the back of Pizzi's eye. The eye will have to be removed, to save the sight of the other.

Farmers' Institute

All interested, as well as farmers and poultrymen, are invited to attend the Institute in Bellevue Hall next Monday, morning, afternoon and evening.

Those attending are asked to bring pencil and tablet, also to ask questions of each lecturer.

The following program looks very interesting, especially to Hammonton and vicinity:

- 10:30 a.m. "The Peach Orchard," Charles D. Barton, prominent fruit grower of Marlton.
- 11:15. "Sweet Potatoes," W. B. Kille, a successful grower near Woodbury.
- 2:00 p.m. "Fertilization of Garden Crops," H. F. Thompson, practical truck farmer of Attleboro, Mass.
- 2:45. "The Right Use of Lime," Prof. Alva Adee, Director of Agricultural Extension, and of Farmers Institutes.
- 3:30. "Attitude," Joseph E. Wing, expert alfalfa grower from Ohio.
- 4:00. "Plant Diseases," Dr. Mel T. Cook, Plant Pathologist of the New Jersey Experiment Station.
- 4:45. "Practical Methods in Breeding for Egg Production," illustrated by Prof. H. B. Lewis, Poultry Husbandman of State Experiment Station.

Bank Brothers



Copyright Hart Schaffner & Marx

Bank Brothers

OVERCOATS

To please Young Men,
Middle-aged Men
and Old Men.

New ideas, late innovations, any amount of variety in shape; roll collar Overcoat, shawl collar Overcoats, Raglans, Slip-ons. The new Balmaccan, style, very dressy, double breasted overcoats, short English overcoats, flaring skirt coat.

Young Men's Suits

With novel and exclusive features that are sure to please. Suits for Middle-aged Men, cut on conservative lines.

All the Overcoats and Suits are carried out in the most beautiful weaves.

Many of these garments were made for us by

Hart Schaffner & Marx

From exclusive patterns. The assortment is complete, governed by the sort of taste that you will appreciate. Values are unsurpassed. You'll get your money's worth in a way that will be very satisfying.



Copyright Hart Schaffner & Marx

We can take care of any figure, whether short, stout, or extra tall.

Overcoats and Suits, \$5, \$6.50, \$7.50, \$10, \$12.50, \$13.50, \$15, \$18, \$20, \$22.50

A great collection of Gorgeous Coats for Misses and Women, at remarkably low prices.

In planning for this selling event of Women's and Misses' Winter Coats, we cannot too strongly emphasize the care that has been given to the selection. Not the smallest detail has been overlooked, either in the fabrics, linings, or workmanship. This, together with the low prices, represent an opportunity that you should not miss.

Zibeline and Astrakhan and Serge Coats,

At \$6, \$7.50, \$8.50, \$9, and \$10.

Some half-lined, some all-lined with a guaranteed satin.

Gloves for Men,

Lined and unlined,

For dress, driving, or to work in,—a complete stock, ranging in price from 23 cents to \$3

Coats of Chinchilla, Astrakhan, Zibeline and Boucle.—

In three-quarters and full length, at \$12.50, \$13.50, \$15, and \$18. Messeline and satin lined, in all the latest styles.

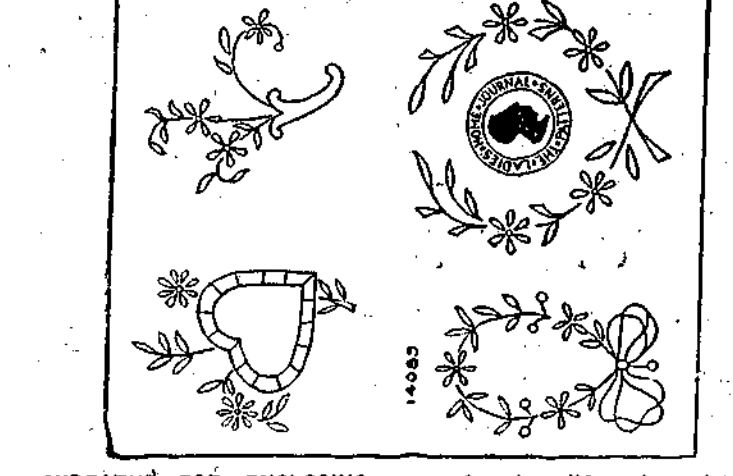
Underwear, Sweater Coats, Shirts and Neckwear for men,

The kind you will like, at attractive prices.

BANK BROS.

Hammonton

BANK BROS.



WREATHS FOR ENCLCING INITIALS.

Dainty little wreaths, such as are illustrated here, are very useful for enclosing initials or monograms on articles of underwear and also on fancy articles, such as one would make for Christmas gifts. These wreaths are appropriate for use on lingerie, waists, underwear, intimate garments, stockings, handkerchiefs and neckwear. They may be developed in white or colors in solid work, eyelets and needlework.

The largest wreath is suitable for enclosing a large initial or a 1-2 inch monogram; the heart-shaped one and the wreath with the bow-knot will enclose 1-2 inch letters on handkerchiefs.

Six transfers, of each wreath, are contained in pattern. Pattern No. 1485 which will be supplied to readers for ten cents.

Address: Pattern Department, 615 West 43d Street, New York.

PULPIT TOPICS.

APOSTASY A PRECURSOR OF JUDGMENT.

Matt. 24: 10.

The tradition among His simple words of a saying of our Lord which is hard to understand, is a confirmation of the authenticity of the Gospel.

I. Interpretation.

It is difficult to interpret this text. "Our Lord in His injunction, 'Whoso readeth, let him understand,' gives us a hint that there is more than meets the eye upon the surface. The saying of the Lord is not a warning, but a promise. It is a promise that if we shall cause the sacrifice and the oblation to cease, and for the everproceeding of abominations he shall make it desolate."

2. This was a warning to the Jewish Christians, who heeded it, and fled from the beleaguered city of Jerusalem, and took refuge at Pella.

3. Some have thought that it referred to the bringing of Roman standards into the Temple, and the attempt to set up a statue of the emperor there; some to the profanation of the Holy Land by the armies of Rome roundabout Jerusalem.

(a) Our Lord said: Your house is left unto you desolate.

(b) The services of the Temple continued for decades but without a content of truth.

(c) Finally, in the day of trial, the emptiness of their faith was manifest. While enemies surrounded the starving city, the Temple was the field of civil war. In every sense an abomination of desolation settled on the holy place.

(d) The evident desolation of the olden sanctuary was a sign to Jewish Christians that the carcass was to be abandoned.

5. The profanation of the sanctuary was a sign of the coming judgment.

II. Application.

May not our Lord here have laid down a general principle?

Undoubtedly the first reference is to the destruction of Jerusalem.

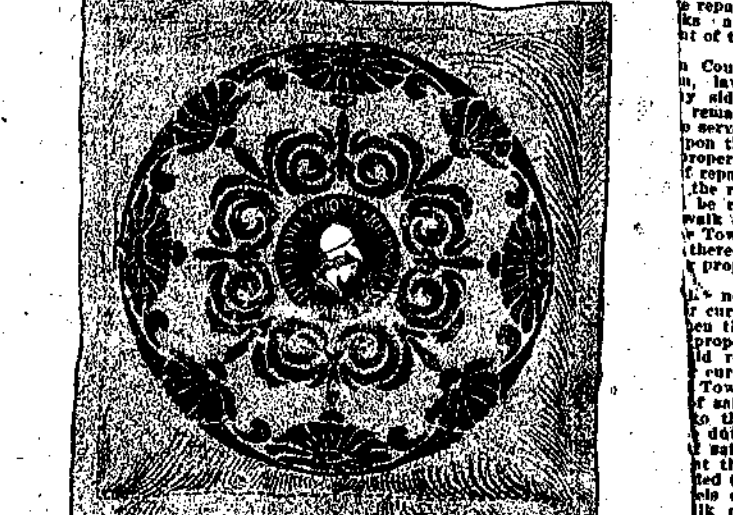
But the first reference of Daniel was to the persecution under Antiochus.

And Paul says (2 Thim. 2:36), that the end of this dispensation will not come until there is a "falling away," until "the Man of Sin" be revealed, who sits in the Temple of God, showing himself that he is God. Various applications of the saying

FROM SLAVE TO SCHOOLMASTER.

Among the Matebele Christians there is perhaps no man better known or more respected than is Shabo of Hope, the pastor and schoolmaster of the Hope Fountain district. Shabo was captured in one of the wars of the Matebele with the Mashona people and brought from his home to become the slave of a Matebele master. As his master wished him to earn money he allowed him to come and work at Hope Fountain where he was employed first to mind the pigs, then in the missionary's house, and later as a wagon-driver.

After he had been some time at work his master decided to have him back with him, and came to fetch him. He pleaded with his master to be allowed to remain with the missionaries, but without avail until some other natives pointed out that, as the lad's heart was set upon staying, he should be of little use to work in the kraal. The matter ended in his remaining, and he showed such promise of future usefulness that one of the missionaries, the late Rev. Dr. Carnegie, took him down to Lovedale, and at the famous institution there he was trained, and during that time was baptized. Shortly after his return to Hope Fountain, this time as teacher, he succeeded in his work, and so strong his influence for good that it was decided to open a station



AN EFFECTIVE DESIGN FOR A PILLOW-COVER.

Unique and attractive are the many articles seen in the Sets and Crafts shops, but very expensive are these lovely things. One may, however, possess these beautiful luxuries at little expense by making them at home, for they demand but a bit of ingenuity in combining materials and colors.

Quite varied are the uses to which this design may be put as it may be used for stenciling, embroidery or for cut leather work.

This design is suitable for use on pillow or table-cover or portions of the design may be used on table-runners, portieres, couch-covers, screens and curtains of linen, Shantung, poplin, satin, or crafts canvas.

The flowers in this design used as stencil would make an exceptional character all over pattern for decorating the draperies of a room.

These materials are inexpensive as come in a variety of colors. Oil paint may be used for stenciling and mixed with gasoline or with preparation of turpentine on plain acetate one ounce, oil of wintergreen one ounce, alcohol one ounce, and turpentine one ounce.

The essential points to be remembered, in the successful stenciling of textile fabrics, is to have a dry sheet of blotting paper always beneath the stencil, and to have the brush rubbed almost dry before applying it to the material.

Pattern number 1481 is 9 inches in diameter and will be supplied to readers for fifteen cents.

Address: Pattern Department, 615 West 43d Street, New York.

THE DIVORCE EVIL.

The divorce evil is world-wide, and is increasing despite legislation. It is to our shame that, according to authentic statistics, our nation, with a single exception, leads in the number of divorces. The exception is Japan. In five years Japan had 99,947 divorces, or 216 for every 100,000 of the population. In the United States we had in the same period 55,602, or 72 to every 100,000 of the population. In the same time in Germany there were 6,838, or 32 to every 100,000; in France, 8,864, or 23 to every 100,000; in Italy, 310, or 3 to every 100,000; in Norway, 120, or 6 to every 100,000; in Sweden, 250, or 8 to every 100,000.—Christian Intelligencer.

PERSISTENT EVANGELISM.

A distinguished preacher sets forth the divine plan of redemption so far as it relates to the individual soul. "Fret not thyself," says the Psalmist, "else shalt thou be moved to do evil." And in the words of the older Scriptures is the great secret of persistent evangelism: "Indulgence of anger." Let not the sun go down upon your wrath, neither give place to the Devil; for whoso is angry with his brother, he keeps the heart and the mind of the Christian through Christ Jesus. So long as this sentiment is on guard and doing his duty, the castle of the soul is kept secure. But let his sentinel be removed, and the way is opened immediately for an attack upon the fortress.—Pittsburgh Christian Advocate.

A PERIL TO PREACHERS AND OTHERS.

Of all the perils, there is none more common than "the perilous gravitation of the world." It is the peril of compromise. More than one minister has been deceived into believing that the world, the more he would be successful with them; and for this reason he has taken up their amusements, their general associations, and their special viewpoint of God and life. No man ever did this without cutting the nerve of his influence. And many a well-meaning man has lamented all his life the making of this mistake. The shrewd people of this world are very quick to see that if a minister is as worldly as they he is of no account as a worlder, however much of a "good fellow" he may be.—Presbyterian.

THE SENTINEL OF THE SOUL.

Those who indulge in trifling thoughts, either of anxiety or irritation, know that it is a great step in the interpretation of the world when we have discovered that all events are ultimately spiritual.—Brisley.



AN ATTRACTIVE FORGET-ME-NOT WREATH.

Wreaths of dainty forget-me-nots are always in good taste and are much used for embellishing an infinite variety of articles.

This design, which is illustrated on a white linen, and is also appropriate for embroidery on muslin, lawn, or other light material, may be carried out in ribbon embroidery on a chair cushion of note, or satin.

This design may be embroidered entirely in solid work, or the flowers may be developed in outline and needlework, which would be a lovely touch to the design.

After two years of painstaking toil he was recalled to Hope Fountain, and he went to assist in the station of St. John's, where he was employed as a night-woman of white linen, and in also appropriate for embroidery on muslin, lawn, or other light material, may be carried out in ribbon embroidery on a chair cushion of note, or satin.

Pattern number 1270 will be supplied to readers for ten cents.

Address: Pattern Department, 615 West 43d Street, New York.

Of Interest to Women

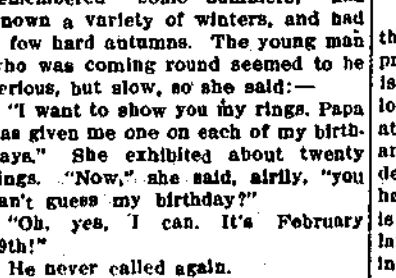


9324



9324. LADIES' HOUSE DRESS WITH THREE-PICKEE SLEEVES AND LONG SLEEVE WITH BAND CUFF, OR SHORTER SLEEVE WITH ROLLING CUFF.

This design is easy to develop and suitable for any of the dress materials now in vogue. The pattern is cut in 3 sizes: 32, 34, 36, 38, 40 and 42 inches bust measure. It requires 5-1/4 yards of 44-inch material for the 34-inch size. A pattern of this illustration mailed to any address on receipt of ten cents in silver or stamps.



9574. LADIES' APRON WITH REMOVABLE BIB.

In this neat and desirable model, the bib may be made adjustable, a practical feature for sometimes a bib is not necessary. The design has long straps fastened to the belt at the back. The skirt is cut in gores and finished with a patch pocket. The design is suitable for percale, glingham, lawn or cambric. The pattern is cut in 3 sizes: Small, medium and large. It requires 3-3/4 yards of 36-inch material for a medium size. A pattern of this illustration mailed to any address on receipt of ten cents in silver or stamps.

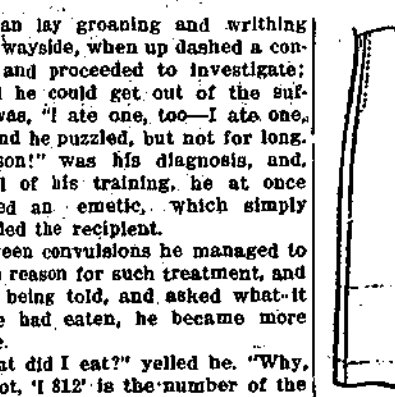


9576. LADIES' HOUSE DRESS WITH THREE-PICKEE SLEEVES AND LONG SLEEVE WITH BAND CUFF, OR SHORTER SLEEVE WITH ROLLING CUFF.

Pleated percale in ecru with white and blue was used to make this design. Lawn, chambray, glingham, calico or muslin etc. are equally appropriate. The pattern is cut in 3 sizes: Small, medium and large. It requires 4-3/4 yards of 36-inch material for a medium size. A pattern of this illustration mailed to any address on receipt of ten cents in silver or stamps.



9576. LADIES' HOUSE DRESS WITH THREE-PICKEE SLEEVES AND LONG SLEEVE WITH BAND CUFF, OR SHORTER SLEEVE WITH ROLLING CUFF.

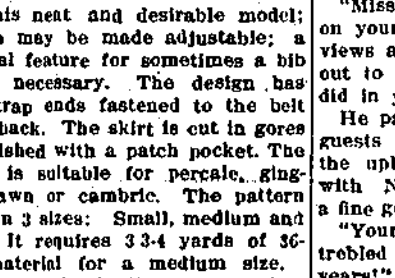


9572



9572. PETTICOAT FOR MISSES AND SMALL WOMEN IN RAISED OR NORMAL WAISTLINE.

This model is suitable for cambric, satinet, moire, lawn, balaisor or silk. The darts may be omitted. The design may be finished in normal or raised waistline. The pattern is cut in 4 sizes: 14, 16, 18 and 19 years. It requires 2-1/2 yards of 36-inch material for a 16-year size, with 2 yards of doubling 16 inches wide. A pattern of this illustration mailed to any address on receipt of ten cents in silver or stamps.



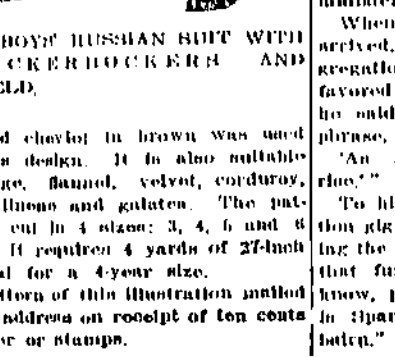
9574. LADIES' APRON WITH REMOVABLE BIB.

In this neat and desirable model, the bib may be made adjustable, a practical feature for sometimes a bib is not necessary. The design has long straps fastened to the belt at the back. The skirt is cut in gores and finished with a patch pocket. The design is suitable for percale, glingham, lawn or cambric. The pattern is cut in 3 sizes: Small, medium and large. It requires 3-3/4 yards of 36-inch material for a medium size. A pattern of this illustration mailed to any address on receipt of ten cents in silver or stamps.

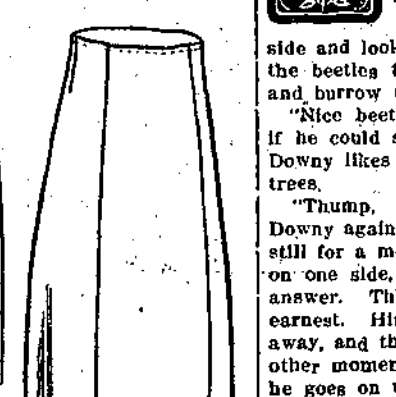


9576. LADIES' HOUSE DRESS WITH THREE-PICKEE SLEEVES AND LONG SLEEVE WITH BAND CUFF, OR SHORTER SLEEVE WITH ROLLING CUFF.

Pleated percale in ecru with white and blue was used to make this design. Lawn, chambray, glingham, calico or muslin etc. are equally appropriate. The pattern is cut in 3 sizes: Small, medium and large. It requires 4-3/4 yards of 36-inch material for a medium size. A pattern of this illustration mailed to any address on receipt of ten cents in silver or stamps.



9576. LADIES' HOUSE DRESS WITH THREE-PICKEE SLEEVES AND LONG SLEEVE WITH BAND CUFF, OR SHORTER SLEEVE WITH ROLLING CUFF.

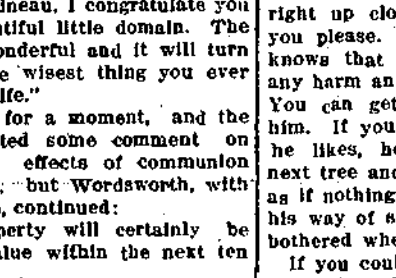


9572



9572. PETTICOAT FOR MISSES AND SMALL WOMEN IN RAISED OR NORMAL WAISTLINE.

This model is suitable for cambric, satinet, moire, lawn, balaisor or silk. The darts may be omitted. The design may be finished in normal or raised waistline. The pattern is cut in 4 sizes: 14, 16, 18 and 19 years. It requires 2-1/2 yards of 36-inch material for a 16-year size, with 2 yards of doubling 16 inches wide. A pattern of this illustration mailed to any address on receipt of ten cents in silver or stamps.



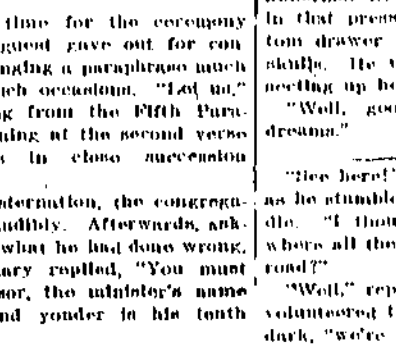
9574. LADIES' APRON WITH REMOVABLE BIB.

In this neat and desirable model, the bib may be made adjustable, a practical feature for sometimes a bib is not necessary. The design has long straps fastened to the belt at the back. The skirt is cut in gores and finished with a patch pocket. The design is suitable for percale, glingham, lawn or cambric. The pattern is cut in 3 sizes: Small, medium and large. It requires 3-3/4 yards of 36-inch material for a medium size. A pattern of this illustration mailed to any address on receipt of ten cents in silver or stamps.



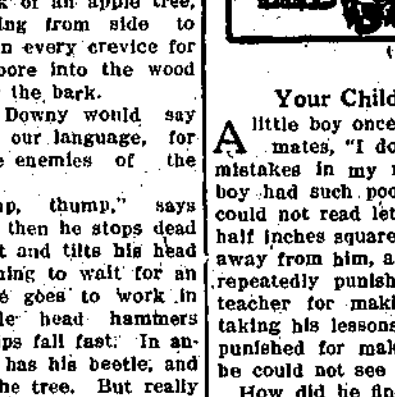
9576. LADIES' HOUSE DRESS WITH THREE-PICKEE SLEEVES AND LONG SLEEVE WITH BAND CUFF, OR SHORTER SLEEVE WITH ROLLING CUFF.

Pleated percale in ecru with white and blue was used to make this design. Lawn, chambray, glingham, calico or muslin etc. are equally appropriate. The pattern is cut in 3 sizes: Small, medium and large. It requires 4-3/4 yards of 36-inch material for a medium size. A pattern of this illustration mailed to any address on receipt of ten cents in silver or stamps.

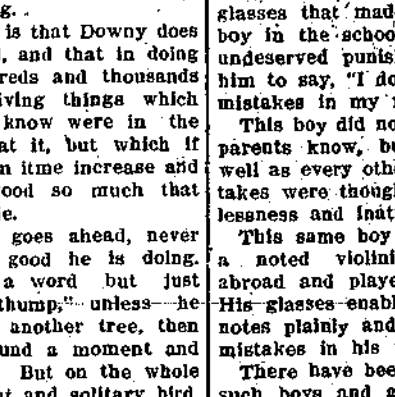


9576. LADIES' HOUSE DRESS WITH THREE-PICKEE SLEEVES AND LONG SLEEVE WITH BAND CUFF, OR SHORTER SLEEVE WITH ROLLING CUFF.

DOVNEY WOODPECKER'S GOOD WORK.

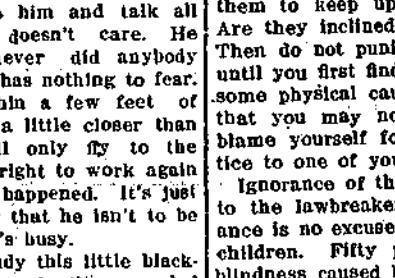


9572



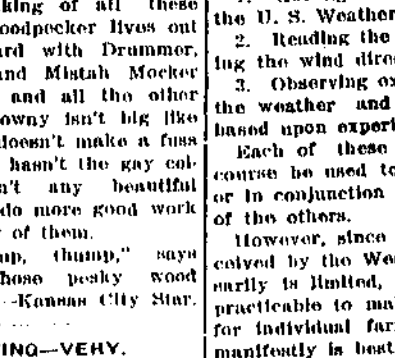
9572. PETTICOAT FOR MISSES AND SMALL WOMEN IN RAISED OR NORMAL WAISTLINE.

This model is suitable for cambric, satinet, moire, lawn, balaisor or silk. The darts may be omitted. The design may be finished in normal or raised waistline. The pattern is cut in 4 sizes: 14, 16, 18 and 19 years. It requires 2-1/2 yards of 36-inch material for a 16-year size, with 2 yards of doubling 16 inches wide. A pattern of this illustration mailed to any address on receipt of ten cents in silver or stamps.



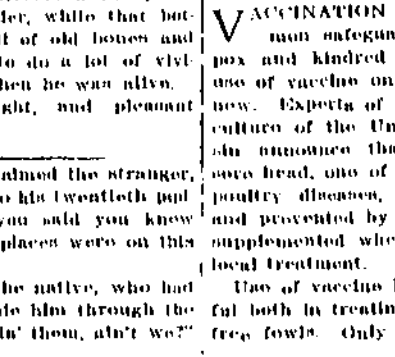
9574. LADIES' APRON WITH REMOVABLE BIB.

In this neat and desirable model, the bib may be made adjustable, a practical feature for sometimes a bib is not necessary. The design has long straps fastened to the belt at the back. The skirt is cut in gores and finished with a patch pocket. The design is suitable for percale, glingham, lawn or cambric. The pattern is cut in 3 sizes: Small, medium and large. It requires 3-3/4 yards of 36-inch material for a medium size. A pattern of this illustration mailed to any address on receipt of ten cents in silver or stamps.



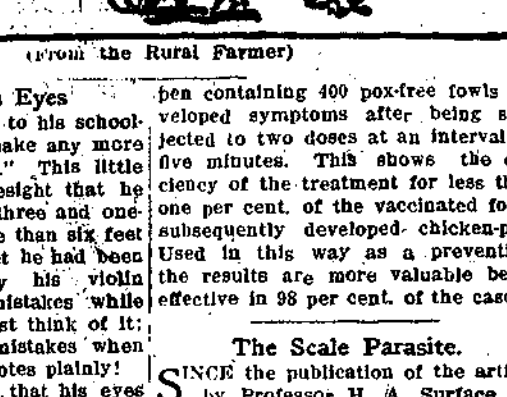
9576. LADIES' HOUSE DRESS WITH THREE-PICKEE SLEEVES AND LONG SLEEVE WITH BAND CUFF, OR SHORTER SLEEVE WITH ROLLING CUFF.

Pleated percale in ecru with white and blue was used to make this design. Lawn, chambray, glingham, calico or muslin etc. are equally appropriate. The pattern is cut in 3 sizes: Small, medium and large. It requires 4-3/4 yards of 36-inch material for a medium size. A pattern of this illustration mailed to any address on receipt of ten cents in silver or stamps.

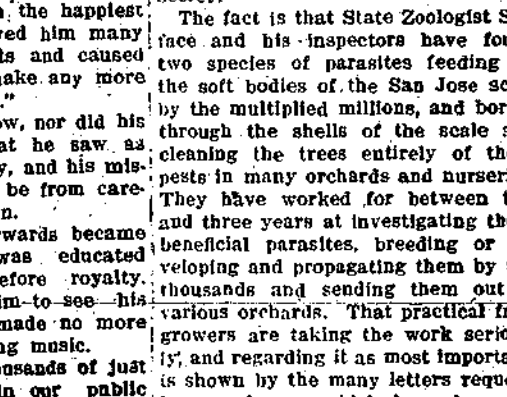


9576. LADIES' HOUSE DRESS WITH THREE-PICKEE SLEEVES AND LONG SLEEVE WITH BAND CUFF, OR SHORTER SLEEVE WITH ROLLING CUFF.

FARM NOTES.

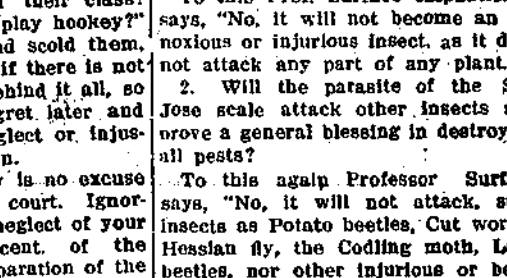


9572



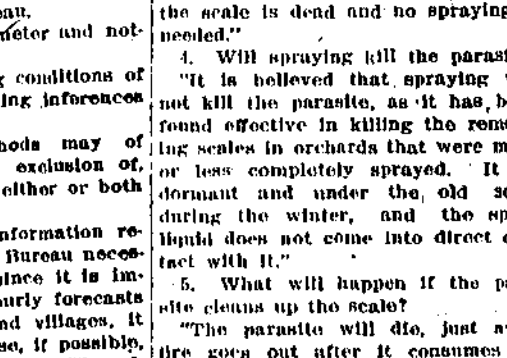
9572. PETTICOAT FOR MISSES AND SMALL WOMEN IN RAISED OR NORMAL WAISTLINE.

This model is suitable for cambric, satinet, moire, lawn, balaisor or silk. The darts may be omitted. The design may be finished in normal or raised waistline. The pattern is cut in 4 sizes: 14, 16, 18 and 19 years. It requires 2-1/2 yards of 36-inch material for a 16-year size, with 2 yards of doubling 16 inches wide. A pattern of this illustration mailed to any address on receipt of ten cents in silver or stamps.



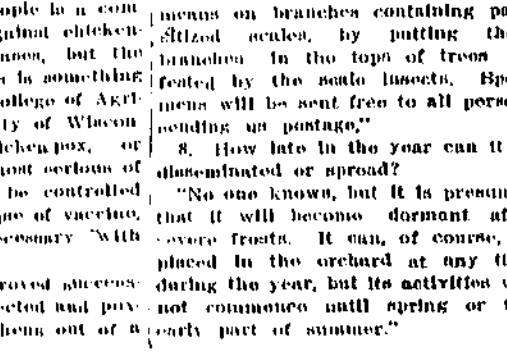
9574. LADIES' APRON WITH REMOVABLE BIB.

In this neat and desirable model, the bib may be made adjustable, a practical feature for sometimes a bib is not necessary. The design has long straps fastened to the belt at the back. The skirt is cut in gores and finished with a patch pocket. The design is suitable for percale, glingham, lawn or cambric. The pattern is cut in 3 sizes: Small, medium and large. It requires 3-3/4 yards of 36-inch material for a medium size. A pattern of this illustration mailed to any address on receipt of ten cents in silver or stamps.



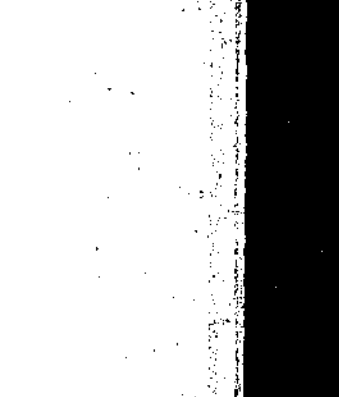
9576. LADIES' HOUSE DRESS WITH THREE-PICKEE SLEEVES AND LONG SLEEVE WITH BAND CUFF, OR SHORTER SLEEVE WITH ROLLING CUFF.

Pleated percale in ecru with white and blue was used to make this design. Lawn, chambray, glingham, calico or muslin etc. are equally appropriate. The pattern is cut in 3 sizes: Small, medium and large. It requires 4-3/4 yards of 36-inch material for a medium size. A pattern of this illustration mailed to any address on receipt of ten cents in silver or stamps.

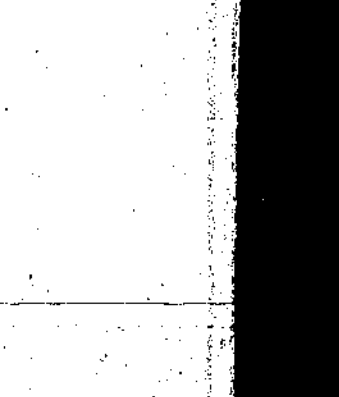


9576. LADIES' HOUSE DRESS WITH THREE-PICKEE SLEEVES AND LONG SLEEVE WITH BAND CUFF, OR SHORTER SLEEVE WITH ROLLING CUFF.

THE SCALE PARASITE.



9572



9572. PETTICOAT FOR MISSES AND SMALL WOMEN IN RAISED OR NORMAL WAISTLINE.

This model is suitable for cambric, satinet, moire, lawn, balaisor or silk. The darts may be omitted. The design may be finished in normal or raised waistline. The pattern is cut in 4 sizes: 14, 16, 18 and 19 years. It requires 2-1/2 yards of 36-inch material for a 16-year size, with 2 yards of doubling 16 inches wide. A pattern of this illustration mailed to any address on receipt of ten cents in silver or stamps.



9574. LADIES' APRON WITH REMOVABLE BIB.

In this neat and desirable model, the bib may be made adjustable, a practical feature for sometimes a bib is not necessary. The design has long straps fastened to the belt at the back. The skirt is cut in gores and finished with a patch pocket. The design is suitable for percale, glingham, lawn or cambric. The pattern is cut in 3 sizes: Small, medium and large. It requires 3-3/4 yards of 36-inch material for a medium size. A pattern of this illustration mailed to any address on receipt of ten cents in silver or stamps.



9576. LADIES' HOUSE DRESS WITH THREE-PICKEE SLEEVES AND LONG SLEEVE WITH BAND CUFF, OR SHORTER SLEEVE WITH ROLLING CUFF.

Pleated percale in ecru with white and blue was used to make this design. Lawn, chambray, glingham, calico or muslin etc. are equally appropriate. The pattern is cut in 3 sizes: Small, medium and large. It requires 4-3/4 yards of 36-inch material for a medium size. A pattern of this illustration mailed to any address on receipt of ten cents in silver or stamps.



9576. LADIES' HOUSE DRESS WITH THREE-PICKEE SLEEVES AND LONG SLEEVE WITH BAND CUFF, OR SHORTER SLEEVE WITH ROLLING CUFF.

The Peoples Bank

Hammonton, N. J.

Capital, - - - \$50,000
Surplus and
Undivided Profits, \$58,000

Three per cent interest paid
on time deposits

Two per cent interest allowed on
demand accounts having daily
balance of \$1000 or more.

Safe Deposit Boxes for Rent

M. L. JACKSON, President
W. J. SMITH, Vice-Pres't
W. R. TILTON, Cashier

DIRECTORS

M. L. Jackson J. A. Waas
C. F. Osgood George Elvins
Wm. J. Smith J. C. Anderson
Sam'l Anderson W. R. Tilton
Wm. L. Black



The
Hammont'n
Telephone

Gives Best Service

Is the Cheapest!

A. J. RIDER,

President and Manager.

Office in Odd Fellows Building.

Charles Davenport

Contractor and Builder

All work given prompt and careful
attention. A first-class job guaranteed.
HAMMONTON, N. J.

Local Phone 821 517 Twelfth St.

W. H. Bernshouse

Fire Insurance

Strongest Companies

Lowest Rates

Conveyancing,

Notary Public,

Commissioner of Deeds.

Hammonton.

A. H. Phillips Co.

Fire Insurance

MONEY

FOR

MORTGAGE LOANS

Bartlett Building, - Atlantic City

The Hammonton Paint

Is the very best paint ever used in
Hammonton.

There are scores of buildings in
town covered with this paint,
which look well after eight or
ten years of wear.

The Hammonton Paint is sold for
less than other first-class paint.

It has no equal, as it works well,
covers well, and wears well.

Sold by JOSEPH I. TAYLOR

House, Sign, and Carriage Painter,
Second and Pleasant Sts.,
Hammonton, N. J.

DR. J. A. WAAS

DENTIST

Bellevue Avenue, Hammonton

Hemingway's

Schubert PIANO Ware-rooms



Does \$100 Look Good to You?

I will save you that much and
more if you are looking for a piano
or player piano. What's the use
of buying a second-hand piano
when you can have a new one of
better grade at the same price.
What's the use of buying cheaper
quality, when you can have the
best direct from the factory at the
same cost, or less?

Don't be old-fashioned and say,
"I don't see how it can be done."
Look into my proposition and see
for yourself. Just because pianos
have never been sold here before
on this plan and at such low prices,
is no reason they cannot be. I
save you the middleman's profit.

New Uprights

\$175	other dealers ask	\$275
190	other dealers ask	300
225	other dealers ask	325
88 Note Player Pianos		
295	other dealers ask	450
325	other dealers ask	550
550	other dealers ask	800

40 pr ct. disc. on Player Rolls
Easy monthly payments can be
arranged. Send for special list
and full information.

Pianos and Player Pianos tuned
and regulated.

Work guaranteed.

The Hemingway Piano Company

2616 Atlantic Ave.,

Atlantic City, New Jersey.

OUR ASSETS.

Messrs. Platt and Heyden, who
addressed our Board of Trade meet-
ing last week, in Firemen's Hall,
insisted over and over again that
we must not consider our new
sewerage system, our miles of fine
sidewalks and our splendid water
supply as assets of real value in
our effort to boom Hammonton into
a modern, up-to-date American
City. True it is, that Hammonton
cannot build itself up without these.
They are absolutely necessary in
order to induce home seekers to
settle here; but most other towns
have them, and we cannot depend
on these to induce people to settle
in Hammonton. In making these
very necessary improvements, we
have only been "catching up"
with other towns, but have not got
ahead of them.

What are the real assets which
Hammonton must make use of in
making an effort to grow? In the
first place, we have the finest loca-
tion of any town in South Jersey.
It is right in the very middle of
things in every sense of the word.
Largely, the farm products of South
Jersey must pass our very door to
reach the best market. Almost
entirely, the pleasure-seeking public
must pass through Hammonton to
reach the world famous resorts
along the Atlantic coast. The
entire West, South West and North
West of this great country must
pass through Philadelphia to reach
these resorts; and the stream often
swells into a mighty avalanche.
This stream must flow right through
Hammonton,—with all that comes
from New York, Brooklyn, Boston
and hundreds more of the smaller
cities in that neck of the woods,
added to it. Being right in the
very middle of things, Hammonton
has better shipping facilities, inner

train service, and can get "Some-
where," "Anywhere," easier than
any other town in South Jersey.
Some day I am going to get up a
little map, just to my own notion.
This will show the advantages of
Hammonton at a glance, and in
five seconds convince the home
seeker that the nearer he can locate
to Hammonton the better it will be
for him.

A still valuable asset which we
have, and which other towns in
South Jersey do not have, at least
in the same degree, is the fact that
Hammonton is located in the pine
belt. There is nothing on earth
man will not willingly give for his
life. No argument in favor of any
town as a place in which to live, is
quite as strong as that the place is
a very healthy place. That one
idea will bring hundreds of the very
best people to Hammonton, if once
it is presented to the people in the
right way. If "Ye Editors" do
not sit down on me, I will tell you
about Hammonton as a health
resort, next week.

J. A. VANFLEET.

Bellevue Hall

One Night Only

Tuesday Eve'g, Nov. 18

The Greatest Pastoral Drama
ever written

Oak-Hill Farm

In four acts

4—Big Vaudeville Acts—4

Singing Dancing Music

Prices, 25, 35, 50 cents.

Tickets at Klingenberg's

Concert Band Solo Orchestra

We have everything
you need in cold weather
in the hardware line.

Call and see for yourselves.

Harry McD. Little

Odd Fellows Building.

Plumbing done in all its branches

Repairing properly done

Hammonton Poultry Association

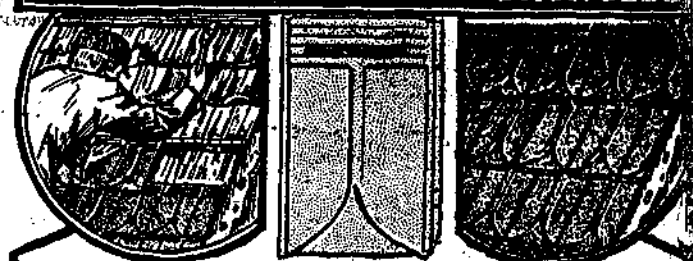
Feed and Poultry Supply Store

DEALERS IN

Feed, Grain, Hay, Straw, Flour

Poultry Wire, Roofing Paper

CORTRIGHT METAL SHINGLES



Laid Right Over Wood Shingles

No Dirt, No Bother—In a very short time any building can have its fire-
trap covering turned into a modern fire-proof, storm-proof, lightning-proof
roof at a very moderate cost—a roof that will last as long as the building
and never need repairs.

For Sale by

GEORGE O. BOBST,

Contractor & Builder, Hammonton, N.

E. P. JONES

Funeral Director and Embalmer

233 Bellevue Ave.

Local Phone 698, Bell 21-x

Hammonton - N. J.

A GAS HEATER

IN YOUR HOME WILL

Make the Chilly Evenings Comfy

Early Colds take Strong Holds!

The chilly mornings and evenings of the early Fall ke
the doctors busy. Sitting around in cold creepy
rooms before the regular heating plant is put into
commission, starts coughs, colds, and sometimes
even more serious ailments. Why take the risk?

Get a Gas Heater, and be Safe and Comfortable. We have these heat
in all sizes, suitable for any purpose. We have competent men
who will connect them for you free of charge. Prices moderate
enough to suit any purse.

Hammonton & E. H. City Gas Co.

We are now booking orders for

The Grosselli Chemical Co.'s

ARSENATE
OF LEAD

Quality the highest! Prices right!

GEORGE ELVINS,

Hammonton, - New Jersey

WE DON'T SELL CHEAP TAILORING

Primarily because our customers are not the "cheap" kind—they have learned from costly experience elsewhere
that the best is the most economical. We have never been obliged to represent adulterated fabrics as "pure
wool," nor to offer "sweat shop" garments with the argument that we can
save you money through poorly-paid, inexperienced help.

SHOES and RUBBERS

Cheap clothes, like cheap jewelry, soon show their
actual worth, and the man who is deceived thereby
is not wise. Everything is sold according to its
relative worth,—you rarely get more than what
you actually pay for.

UNDERWEAR

If we offered you "strictly pure cream butter" at 15
cents a pound, and you later found it to be a cheap
oleomargarine, you'd lose no time in exposing us.

HOSIERY

Shoes for all

Pajamas and Night Shirts.



ED. V. PRICE & Co.

MONFORT

We pride ourselves on our Pure Leather.

HATS, CAPS AND SHIRTS

Many well-meaning people make the mistake
of expecting \$2 and \$3 value for \$1, due to the
impossible claims of over-anxious dealers.
They later come to realize that their money
was wanted more than their future business.

NECKWEAR

Cheap clothes are either lacking in the quality
of woolsens or in skimping of workmanship.
High-grade artist tailors like those with Ed. V.
Price & Co., cost money, and are worth it.
Don't let any "smooth" salesman convince you
to the contrary.

Sweaters Gents' Furnishings

Gents' Goods

Ladies' Sweaters a Specialty

