

A thousand thanks
For those nice things
Said about the S. J. R.'s
Always on time.

South Jersey Republican

Don't forget the date
Of the Home Guard
Labor Day Carnival,
Monday, Sept. 3rd.

HOYT & SON, Publishers and Printers.

One twenty-five per year.

Vol. 55

HAMMONTON, N. J., SATURDAY, AUGUST 18, 1917

No. 38

Regular Council meeting next Wednesday evening.

The sewer tax sale has been postponed to August 25th.

Mrs. P. L. Capelli is seriously ill, in St. Agnes Hospital, Phila.

Chester M. Crowell greeted many Hammonton friends last Saturday.

Volunteer Fire Company's business meeting on Monday evening next.

Miss Thelma Laws, of Dividing Creek, is visiting her uncle, W. R. Perry.

Peaches are being shipped by the train-load, and are bringing very good prices.

Miss Edith Dudley has been visiting her brother, at Maplewood, for a few weeks.

C. P. Livengood has suspended a large illuminated sign in front of his jewelry store.

Miss K. Adella Hill returned on Saturday, after spending some time in New England.

Mrs. William Camp will spend the next two weeks with her son, in Cleveland, Ohio.

James F. Patten has been very sick for a week and more, but is said to be recovering.

Prof. Eunis, instructor in physical culture, has resigned, to accept an army appointment.

Robert McC. Miller and his two little ones spent Sunday last with Hammonton relatives.

Monthly meeting of Farmers' and Merchants' Loan Association next Tuesday evening.

Master Charles Galigue Laver contributed his box of pennies and nickels to become a member of the Red Cross.

Chas. C. Comb, our Overseer of Highways, broke the little finger bone of his left hand, above the knuckle-joint.

Hammonton Home Guards may christen Bellevue Avenue, Tuesday evening next, accompanied by the Hammonton Band.

Harry K. Carrell enlisted in the U. S. service last week, and was ordered to report at Fort Howard, Baltimore, on Monday.

Mr. and Mrs. Walter Fountain and daughter Grace, of Philada., are spending the month with her sister, Mrs. Walter Buntz.

Prof. E. J. Goddard, of the Commercial Department of our schools, has requested leave of absence, to enter the Government service.

The Navy League "500" have taken it upon themselves to raise a six-year-old orphan boy, — Alfred Gruffaz, whose address is Lovagny, Haute Lavoire, France.

Subscriptions and generous donations to Red Cross are coming in daily. We have one life member; who will be the next? Twenty-five dollars makes you one.

Rev. Wm. J. Cusworth, Scout Master, will accompany about a dozen of his young men to Camp Holland, up the Delaware, to-day, for part of their fortnight's outing.

Our Central schools are to be re-opened on Tuesday, Sept. 4th. For the present, there will be but one session per day, — from eight to one o'clock, to allow afternoons for farm work. Suburban schools will open on Monday, Sept. 17th.

The Bellevue Avenue paving is virtually completed, and its use has been permitted. Those who ought to know say that it is a job of which Hammonton may justly be proud. We have now a mile and a-quarter of the finest roadbed in Jersey or any other state, — smooth as a floor from end to end, from curb to curb, solid as a rock.

Frank Werner has won a deserved promotion from the prosperous Hammonton hosiery mill to Taubel's new up-to-date factory at Twenty-second and Federal Streets, Camden. He is now overseeing the installation of machinery, etc., at that plant, and breaking in his successor here, William Tate. He and his family will remove to their new home in West Collingswood. While their many friends regret their departure, they rejoice in his promotion.

The District meeting planned by the Odd Fellows for this week, was postponed until the 29th, because some of the Grand Lodge officers had other engagements. A very interesting meeting is anticipated.

The owner of that parrot on the Watkins place has been found; he visited and interviewed Polly, but she has had a taste of liberty and declined to return to captivity. A touch of frost in the air may cause her to change her mind.

Percy Herbert, son of Charles J. Herbert, of Bryn Mawr, has been visiting his grandparents, Mr. and Mrs. D. C. Herbert, and Mr. H. E. Andrews, this week. He belongs to the Home Guards, which have been taken over by his state.

There will be a Red Cross benefit at Eagle Theatre on Tuesday eve, Sept. 4th, the shows going on both in the building and on the lawn. As two thousand tickets are to be sold, it will take many willing hands to canvas the town, and the ladies ask that all who will assist to apply next Tuesday, or later, to Miss Lola Cunningham, and get the tickets.

Those who intended to learn the old-newspaper-parawax method of making the every-ready candles, at Mrs. Bitler's, last Wednesday, but forgot the date, will have another opportunity next Wednesday, from 2.30 to 5.00 p. m., at the same place. Adults, as well as Boy Scouts, Camp Fire Girls, and those who go camping, will find the instruction valuable.

All exhibitors of produce from the Hammonton, Folsom and Nesco section who are unable to take the time off to get their exhibits to the County Fair to be held at May's Landing August 29th, 30th, and 31st, should communicate with W. B. McDougall, at Hammonton, to make arrangements for the transfer of such produce. Interested parties desiring premium lists may have them by applying to same party. Bell phone 337-2.

The Mapapawasee Girls of Miss Miriam Elvins' group of Camp Fire Girls deserve many thanks for their donation of kits for our boys in the navy. These girls are doing their full share toward helping the boys who are fighting for us. Each kit contains tooth brush, soap and soap box, knife, buttons (white and black), needles, darning cotton, thimble, envelopes, paper, tablet and pencil, drinking cup, handkerchiefs, literature, etc.

Mrs. L. H. Parkhurst, chairman of the War Relief Department of the Needlework Guild, has consented to take a much needed rest from that work for a couple of weeks; consequently the rooms will not be open for that work until Tuesday, September 4th. A few of our ladies have spent considerable time making comfort kits for our boys in the army and navy. Twenty have been completed, some sent to Sea Girt, others to go to Allentown. Mrs. Harry Smith, who is spending a few weeks here, very kindly assisted. Several have contributed very generously to the filling the kits, — among them Mr. J. T. Kelly, Mr. Harry Smith, and Mrs. E. A. Hooper. The War Relief also received a contribution from Mrs. W. S. Turner.

Town Council Meeting.

At a special meeting held on Wednesday evening, all members were present except Dr. McIlvaine. There being no objections to the proposed ordinances, they were passed second and final reading. By a unanimous vote, Antonio Pinto's pool-room license was renewed for one year.

Being employed in Uncle Sam's service, Dr. McIlvaine tendered his resignation as member of Council, and it was accepted.

Complaint was received that the overflow from the stand-pipe was damaging adjoining properties. Referred.

Complaint was made of disorderly boys, their favorite stunt being throwing tomatoes, etc., breaking windows on Bellevue Av. Referred to committee, to co-operate with the police.

Bank Bros.

Open Evenings till 8 o'clock—Saturdays till 10

Bank Bros.

UNTIL FURTHER NOTICE

If you are not buying liberally during this Clearance Sale of ours, you will wish later that you had. Every dollar that you invest in merchandise at our regular prices means a great saving. At the reduced prices it is so much more dividend on your investment.

Men's Suits

At \$18.50 and \$18

They are worth now \$22.50 and \$25. Fine serges and worsteds, of the good reliable make. Tailored in conservative and young men's styles.

We don't know of any better investment

Suits at \$20 and \$22.50

Worth now \$25 and \$30

These garments were made for us by Hart Schaffner & Marx, of all wool material.

If you will need a suit within the next year, it will pay you to buy now and lay it by, — the saving is big enough to warrant you to do this.

Suits at \$12.50 and \$13.50

The present market price for these suits would be \$18 and \$20.

Serges, worsteds and cassimeres

Group 1, \$15 and \$16.50 Suits

reduced to \$12

Group 2, \$13.50 and \$12.50 Suits

reduced to \$10

Group 3, \$7.50 Suits reduced to \$5

Men's Union Suits at lower prices.

Buy now, and keep them for next season

Union Suits reduced to 39 cents; sizes 36, 38, 40, 42, 44, and 46

\$1.50 Union Suits reduced to \$1

\$1.75 Union Suits reduced to \$1.25

\$2 and \$2.50 Union Suits reduced to \$1.50; all with very fine guage crotch

Dresses, Skirts & Waists

Reduced in Price.

\$1.25 and \$1 Waists reduced to 75 cents; voile and lawn

\$2.50 and \$2.25 Silk Waists reduced to \$1.50

\$3.75 and \$3.50 Silk Waists reduced to \$2.50

Slightly Soiled Dresses

That were \$5 and \$7.50, reduced to \$2

Linen Suits

That were \$5 and \$6, reduced to \$1.50

\$1 White Skirts reduced to 75 cents

\$1.25 White Skirts reduced to 95 cents

Table Damask at 48 cents; value 60 cents; 58 inches wide

Table Damask at 65 cents; value 85 cents; 70 inches wide

Table Damask at 75 cents per yard; value \$1; 72 inches wide

48 cent and 25 cent Ladies' Fancy Collars reduced to 19 cents

\$1 Princess Slips reduced to 50 cents

\$2 Princess Slips reduced to \$1

85 cent Combinations reduced to 50 cents

\$1.25 and \$1.50 Combinations reduced to 75 cents

Night Gowns and Chemise

at very low prices

Silk Petticoats

at \$3 and \$3.75,—several different colors

Remnants of Dress Goods

BANK BROTHERS' STORE

Hammonton

Eagle Theatre Program for Week Aug. 20

MONDAY . World . . Clara Kimball Young, in "Deep Purple," and Comedy.
TUESDAY . Paramount . . Wallace Reid and C. Ridgely, in "The Selfish Woman," and Comedy.
WEDNESDAY . World . . Clara Kimball Young, in "Savage Instinct," and Comedy.
THURSDAY . Metro . . Emily Stevens, in "Wheel of the Law," and Comedy.
FRIDAY . Triangle . . Norma Talmadge, in "The Devil's Needle," and 2-reel Keystone Comedy.
SATURDAY . Paramount . . Dustin Farnum, in "Davy Crockett,"
Burton Holmes Travel Pictures, and Comedy.

Desirable Property To Sell at a Sacrifice

As I am leaving town, I offer my property on Maple Street for sale at a sacrifice to quick buyer, at your own terms. New house, 7 rooms and bath, all conveniences, chestnut finish throughout, hard-wood floors, hot water heat, garage. Apply at once to Frank Werner, Hammonton, N. J.

Cranberry Boxes
FOR SALE.
J. L. ABBOTT, Nesco
Bell Phone 49-7

S. J. R. \$1.25

**Our 15 day
Summer
Clearance Sale**

**of all Summer Shoes
and Oxfords**
Now Going On!

Don't fail to attend,
as it will more
than pay you.

**Our entire stock of
Summer Footwear
must be sold to make
room for Fall Goods
arriving daily.**

Boston Sample Shoe Store
204 Bellevue Ave.

We give Yellow Trading Stamps.

W. H. Bernshouse
Fire Insurance
Strongest Companies
Lowest Rates
Conveyancing,
Notary Public,
Commissioner of Deeds
Hammoncton.



Your Groceries Will

Come on Time!
don't worry about that. There'll
be no disappointments about the
quality, either. Your housewife
judgment will be thoroughly sat-
isfied. As for prices, well, just
compare ours with others of equal
grades. On our meats especially,
you will find a saving of from two
to six cents a pound.

Ruberton's Market
Both Phones. Free delivery

A. H. Phillips Co.
Fire Insurance

MONEY
FOR
MORTGAGE LOANS

Bartlett Building, Atlantic City

D. J. SEXTON & CO.

(Wholesale of Hammoncton)

**Paperhanging,
Painting, and
Graining**

Relatives furnished.

Lock Box 63, Hammoncton, N. J.

PROPOSALS
FOR TRANSPORTATION OF PUPILS
Sealed proposals enclosed "Mark for Trans-
portation" and the name of the bidder, will be
received by the Board of Education, at the
office of the Superintendent, at 1000-1002
Broadway, New York City, on August 18, 1917,
at 10 o'clock, for the transportation of pupils
from the City of New York to the City of
Hammoncton, N. J., on August 19, 1917.
Route 1. From City and Union Roads to
Central School and return. 11 pupils.
Route 2. From Pine and Union Roads to
Central School and return. 11 pupils.
Route 3. From Laurel-Middle Road School
House to Central School and return. 10
pupils on route.
Route 4. From Laurel-Middle Road School
House to Central School and return. 10
pupils on route.
Route 5. From Laurel-Middle Road School
House to Central School and return. 10
pupils on route.
Route 6. From Laurel-Middle Road School
House to Central School and return. 10
pupils on route.
Route 7. From Laurel-Middle Road School
House to Central School and return. 10
pupils on route.
Route 8. From Laurel-Middle Road School
House to Central School and return. 10
pupils on route.
Route 9. From Laurel-Middle Road School
House to Central School and return. 10
pupils on route.
Route 10. From Laurel-Middle Road School
House to Central School and return. 10
pupils on route.
Route 11. From Laurel-Middle Road School
House to Central School and return. 10
pupils on route.
Route 12. From Laurel-Middle Road School
House to Central School and return. 10
pupils on route.
Route 13. From Laurel-Middle Road School
House to Central School and return. 10
pupils on route.
Route 14. From Laurel-Middle Road School
House to Central School and return. 10
pupils on route.
Route 15. From Laurel-Middle Road School
House to Central School and return. 10
pupils on route.
Route 16. From Laurel-Middle Road School
House to Central School and return. 10
pupils on route.
Route 17. From Laurel-Middle Road School
House to Central School and return. 10
pupils on route.
Route 18. From Laurel-Middle Road School
House to Central School and return. 10
pupils on route.
Route 19. From Laurel-Middle Road School
House to Central School and return. 10
pupils on route.
Route 20. From Laurel-Middle Road School
House to Central School and return. 10
pupils on route.
Route 21. From Laurel-Middle Road School
House to Central School and return. 10
pupils on route.
Route 22. From Laurel-Middle Road School
House to Central School and return. 10
pupils on route.
Route 23. From Laurel-Middle Road School
House to Central School and return. 10
pupils on route.
Route 24. From Laurel-Middle Road School
House to Central School and return. 10
pupils on route.
Route 25. From Laurel-Middle Road School
House to Central School and return. 10
pupils on route.
Route 26. From Laurel-Middle Road School
House to Central School and return. 10
pupils on route.
Route 27. From Laurel-Middle Road School
House to Central School and return. 10
pupils on route.
Route 28. From Laurel-Middle Road School
House to Central School and return. 10
pupils on route.
Route 29. From Laurel-Middle Road School
House to Central School and return. 10
pupils on route.
Route 30. From Laurel-Middle Road School
House to Central School and return. 10
pupils on route.
Route 31. From Laurel-Middle Road School
House to Central School and return. 10
pupils on route.
Route 32. From Laurel-Middle Road School
House to Central School and return. 10
pupils on route.
Route 33. From Laurel-Middle Road School
House to Central School and return. 10
pupils on route.
Route 34. From Laurel-Middle Road School
House to Central School and return. 10
pupils on route.
Route 35. From Laurel-Middle Road School
House to Central School and return. 10
pupils on route.
Route 36. From Laurel-Middle Road School
House to Central School and return. 10
pupils on route.
Route 37. From Laurel-Middle Road School
House to Central School and return. 10
pupils on route.
Route 38. From Laurel-Middle Road School
House to Central School and return. 10
pupils on route.
Route 39. From Laurel-Middle Road School
House to Central School and return. 10
pupils on route.
Route 40. From Laurel-Middle Road School
House to Central School and return. 10
pupils on route.
Route 41. From Laurel-Middle Road School
House to Central School and return. 10
pupils on route.
Route 42. From Laurel-Middle Road School
House to Central School and return. 10
pupils on route.
Route 43. From Laurel-Middle Road School
House to Central School and return. 10
pupils on route.
Route 44. From Laurel-Middle Road School
House to Central School and return. 10
pupils on route.
Route 45. From Laurel-Middle Road School
House to Central School and return. 10
pupils on route.
Route 46. From Laurel-Middle Road School
House to Central School and return. 10
pupils on route.
Route 47. From Laurel-Middle Road School
House to Central School and return. 10
pupils on route.
Route 48. From Laurel-Middle Road School
House to Central School and return. 10
pupils on route.
Route 49. From Laurel-Middle Road School
House to Central School and return. 10
pupils on route.
Route 50. From Laurel-Middle Road School
House to Central School and return. 10
pupils on route.
Route 51. From Laurel-Middle Road School
House to Central School and return. 10
pupils on route.
Route 52. From Laurel-Middle Road School
House to Central School and return. 10
pupils on route.
Route 53. From Laurel-Middle Road School
House to Central School and return. 10
pupils on route.
Route 54. From Laurel-Middle Road School
House to Central School and return. 10
pupils on route.
Route 55. From Laurel-Middle Road School
House to Central School and return. 10
pupils on route.
Route 56. From Laurel-Middle Road School
House to Central School and return. 10
pupils on route.
Route 57. From Laurel-Middle Road School
House to Central School and return. 10
pupils on route.
Route 58. From Laurel-Middle Road School
House to Central School and return. 10
pupils on route.
Route 59. From Laurel-Middle Road School
House to Central School and return. 10
pupils on route.
Route 60. From Laurel-Middle Road School
House to Central School and return. 10
pupils on route.
Route 61. From Laurel-Middle Road School
House to Central School and return. 10
pupils on route.
Route 62. From Laurel-Middle Road School
House to Central School and return. 10
pupils on route.
Route 63. From Laurel-Middle Road School
House to Central School and return. 10
pupils on route.
Route 64. From Laurel-Middle Road School
House to Central School and return. 10
pupils on route.
Route 65. From Laurel-Middle Road School
House to Central School and return. 10
pupils on route.
Route 66. From Laurel-Middle Road School
House to Central School and return. 10
pupils on route.
Route 67. From Laurel-Middle Road School
House to Central School and return. 10
pupils on route.
Route 68. From Laurel-Middle Road School
House to Central School and return. 10
pupils on route.
Route 69. From Laurel-Middle Road School
House to Central School and return. 10
pupils on route.
Route 70. From Laurel-Middle Road School
House to Central School and return. 10
pupils on route.
Route 71. From Laurel-Middle Road School
House to Central School and return. 10
pupils on route.
Route 72. From Laurel-Middle Road School
House to Central School and return. 10
pupils on route.
Route 73. From Laurel-Middle Road School
House to Central School and return. 10
pupils on route.
Route 74. From Laurel-Middle Road School
House to Central School and return. 10
pupils on route.
Route 75. From Laurel-Middle Road School
House to Central School and return. 10
pupils on route.
Route 76. From Laurel-Middle Road School
House to Central School and return. 10
pupils on route.
Route 77. From Laurel-Middle Road School
House to Central School and return. 10
pupils on route.
Route 78. From Laurel-Middle Road School
House to Central School and return. 10
pupils on route.
Route 79. From Laurel-Middle Road School
House to Central School and return. 10
pupils on route.
Route 80. From Laurel-Middle Road School
House to Central School and return. 10
pupils on route.
Route 81. From Laurel-Middle Road School
House to Central School and return. 10
pupils on route.
Route 82. From Laurel-Middle Road School
House to Central School and return. 10
pupils on route.
Route 83. From Laurel-Middle Road School
House to Central School and return. 10
pupils on route.
Route 84. From Laurel-Middle Road School
House to Central School and return. 10
pupils on route.
Route 85. From Laurel-Middle Road School
House to Central School and return. 10
pupils on route.
Route 86. From Laurel-Middle Road School
House to Central School and return. 10
pupils on route.
Route 87. From Laurel-Middle Road School
House to Central School and return. 10
pupils on route.
Route 88. From Laurel-Middle Road School
House to Central School and return. 10
pupils on route.
Route 89. From Laurel-Middle Road School
House to Central School and return. 10
pupils on route.
Route 90. From Laurel-Middle Road School
House to Central School and return. 10
pupils on route.
Route 91. From Laurel-Middle Road School
House to Central School and return. 10
pupils on route.
Route 92. From Laurel-Middle Road School
House to Central School and return. 10
pupils on route.
Route 93. From Laurel-Middle Road School
House to Central School and return. 10
pupils on route.
Route 94. From Laurel-Middle Road School
House to Central School and return. 10
pupils on route.
Route 95. From Laurel-Middle Road School
House to Central School and return. 10
pupils on route.
Route 96. From Laurel-Middle Road School
House to Central School and return. 10
pupils on route.
Route 97. From Laurel-Middle Road School
House to Central School and return. 10
pupils on route.
Route 98. From Laurel-Middle Road School
House to Central School and return. 10
pupils on route.
Route 99. From Laurel-Middle Road School
House to Central School and return. 10
pupils on route.
Route 100. From Laurel-Middle Road School
House to Central School and return. 10
pupils on route.

at the High School Building, for transportation
pupils to Hammoncton, N. J., on August 19, 1917.

Route 1. From Pine and Union Roads to
Central School and return. 11 pupils.

Route 2. From Pine and Union Roads to
Central School and return. 11 pupils.

Route 3. From Laurel-Middle Road School
House to Central School and return. 10
pupils on route.

Route 4. From Laurel-Middle Road School
House to Central School and return. 10
pupils on route.

Route 5. From Laurel-Middle Road School
House to Central School and return. 10
pupils on route.

Route 6. From Laurel-Middle Road School
House to Central School and return. 10
pupils on route.

Route 7. From Laurel-Middle Road School
House to Central School and return. 10
pupils on route.

Route 8. From Laurel-Middle Road School
House to Central School and return. 10
pupils on route.

Route 9. From Laurel-Middle Road School
House to Central School and return. 10
pupils on route.

Route 10. From Laurel-Middle Road School
House to Central School and return. 10
pupils on route.

Route 11. From Laurel-Middle Road School
House to Central School and return. 10
pupils on route.

Route 12. From Laurel-Middle Road School
House to Central School and return. 10
pupils on route.

Route 13. From Laurel-Middle Road School
House to Central School and return. 10
pupils on route.

Route 14. From Laurel-Middle Road School
House to Central School and return. 10
pupils on route.

Route 15. From Laurel-Middle Road School
House to Central School and return. 10
pupils on route.

Route 16. From Laurel-Middle Road School
House to Central School and return. 10
pupils on route.

Route 17. From Laurel-Middle Road School
House to Central School and return. 10
pupils on route.

Route 18. From Laurel-Middle Road School
House to Central School and return. 10
pupils on route.

Route 19. From Laurel-Middle Road School
House to Central School and return. 10
pupils on route.

Route 20. From Laurel-Middle Road School
House to Central School and return. 10
pupils on route.

Route 21. From Laurel-Middle Road School
House to Central School and return. 10
pupils on route.

Route 22. From Laurel-Middle Road School
House to Central School and return. 10
pupils on route.

Route 23. From Laurel-Middle Road School
House to Central School and return. 10
pupils on route.

Route 24. From Laurel-Middle Road School
House to Central School and return. 10
pupils on route.

Route 25. From Laurel-Middle Road School
House to Central School and return. 10
pupils on route.

Route 26. From Laurel-Middle Road School
House to Central School and return. 10
pupils on route.

Route 27. From Laurel-Middle Road School
House to Central School and return. 10
pupils on route.

Route 28. From Laurel-Middle Road School
House to Central School and return. 10
pupils on route.

Route 29. From Laurel-Middle Road School
House to Central School and return. 10
pupils on route.

Route 30. From Laurel-Middle Road School
House to Central School and return. 10
pupils on route.

Route 31. From Laurel-Middle Road School
House to Central School and return. 10
pupils on route.

Route 32. From Laurel-Middle Road School
House to Central School and return. 10
pupils on route.

Route 33. From Laurel-Middle Road School
House to Central School and return. 10
pupils on route.

Route 34. From Laurel-Middle Road School
House to Central School and return. 10
pupils on route.

Route 35. From Laurel-Middle Road School
House to Central School and return. 10
pupils on route.

Route 36. From Laurel-Middle Road School
House to Central School and return. 10
pupils on route.

Route 37. From Laurel-Middle Road School
House to Central School and return. 10
pupils on route.

Route 38. From Laurel-Middle Road School
House to Central School and return. 10
pupils on route.

Route 39. From Laurel-Middle Road School
House to Central School and return. 10
pupils on route.

Route 40. From Laurel-Middle Road School
House to Central School and return. 10
pupils on route.

Route 41. From Laurel-Middle Road School
House to Central School and return. 10
pupils on route.

Route 42. From Laurel-Middle Road School
House to Central School and return. 10
pupils on route.

Route 43. From Laurel-Middle Road School
House to Central School and return. 10
pupils on route.

Route 44. From Laurel-Middle Road School
House to Central School and return. 10
pupils on route.

Route 45. From Laurel-Middle Road School
House to Central School and return. 10
pupils on route.

Route 46. From Laurel-Middle Road School
House to Central School and return. 10
pupils on route.

Route 47. From Laurel-Middle Road School
House to Central School and return. 10
pupils on route.

Route 48. From Laurel-Middle Road School
House to Central School and return. 10
pupils on route.

Route 49. From Laurel-Middle Road School
House to Central School and return. 10
pupils on route.

Route 50. From Laurel-Middle Road School
House to Central School and return. 10
pupils on route.

Route 51. From Laurel-Middle Road School
House to Central School and return. 10
pupils on route.

Route 52. From Laurel-Middle Road School
House to Central School and return. 10
pupils on route.

Route 53. From Laurel-Middle Road School
House to Central School and return. 10
pupils on route.

Route 54. From Laurel-Middle Road School
House to Central School and return. 10
pupils on route.

Route 55. From Laurel-Middle Road School
House to Central School and return. 10
pupils on route.

Route 56. From Laurel-Middle Road School
House to Central School and return. 10
pupils on route.

Route 57. From Laurel-Middle Road School
House to Central School and return. 10
pupils on route.

Route 58. From Laurel-Middle Road School
House to Central School and return. 10
pupils on route.

Route 59. From Laurel-Middle Road School
House to Central School and return. 10
pupils on route.

Route 60. From Laurel-Middle Road School
House to Central School and return. 10
pupils on route.

Route 61. From Laurel-Middle Road School
House to Central School and return. 10
pupils on route.

Route 62. From Laurel-Middle Road School
House to Central School and return. 10
pupils on route.

Route 63. From Laurel-Middle Road School
House to Central School and return. 10
pupils on route.

Route 64. From Laurel-Middle Road School
House to Central School and return. 10
pupils on route.

Route 65. From Laurel-Middle Road School
House to Central School and return. 10
pupils on route.

Route 66. From Laurel-Middle Road School
House to Central School and return. 10
pupils on route.

Route 67. From Laurel-Middle Road School
House to Central School and return. 10
pupils on route.

Route 68. From Laurel-Middle Road School
House to Central School and return. 10
pupils on route.

Route 69. From Laurel-Middle Road School
House to Central School and return. 10
pupils on route.

Route 70. From Laurel-Middle Road School
House to Central School and return. 10
pupils on route.

Route 71. From Laurel-Middle Road School
House to Central School and return. 10
pupils on route.

Route 72. From Laurel-Middle Road School
House to Central School and return. 10
pupils on route.

Route 73. From Laurel-Middle Road School
House to Central School and return. 10
pupils on route.

Route 74. From Laurel-Middle Road School
House to Central School and return. 10
pupils on route.

Route 75. From Laurel-Middle Road School
House to Central School and return. 10
pupils on route.

Route 76. From Laurel-Middle Road School
House to Central School and return. 10
pupils on route.

Route 77. From Laurel-Middle Road School
House to Central School and return. 10
pupils on route.

Route 78. From Laurel-Middle Road School
House to Central School and return. 10
pupils on route.

Route 79. From Laurel-Middle Road School
House to Central School and return. 10
pupils on route.

Route 80. From Laurel-Middle Road School
House to Central School and return. 10
pupils on route.

South Jersey Republican
Entered in Hammoncton Post-Office as second-class matter by
HOTT & SON, PUBLISHERS.
Orrville E. Hott, William Q. Hott.
Subscription Price: \$1.25 per year, \$1.25 in Advance. Single copies
5 cents. On sale at all newsstands.
Advertisements by contract on application. Local Phone-322, 323.

SATURDAY, AUGUST 18, 1917

Our Tale of Woe!

You all know that the last issue of the Republican was not mailed
until Monday morning, instead of Saturday. We are minded to tell
you all about it.

The package of paper usually reaches us, by Adams Express from
Philadelphia, on Wednesday or Thursday. Last week it had not made
its appearance on Friday-and-as-we-wait, print it on that day, we
begin a pretty lively campaign of search. We found that it had been
shipped on Wednesday, the way-bill received by the company's agent
here on Thursday, but no package. Then we got the company's busy,
telephone wires were kept ringing all that day and night; our Junior
met every train up to six o'clock in the morning, and the Senior took
a little sleep with his boots on, and the trucks that come through about
daylight were watched. Nothing in sight. The local express agent
was not at fault, but did all he could to help us out.

On Saturday we phoned to the city for a duplicate bundle, which
we received by the American Express Company.

In the meantime, the Adams people had found the missing original
bundle, and delivered it at 6.20 on Saturday evening-only three days
late! We put on extra help, and in a few hours had the edition ready
to mail, and had delivered what we could to near-by subscribers.

The popularity of the Republican was evidenced by the hundred
and more who questioned the post-office employees, the Editors, and at
the news-stand, as to "where is my paper?"

They say that "All's well that end well," but this matter set us
away back in our work, and we don't want another two days siege like
that one; and it left a sad-looking vacancy in our wallet.

Publishing Town Ordinances.

It has been customary for Town Council to introduce an ordinance
at a regular meeting, debate it, and pass it on "first reading." It then
laid over until next meeting (regular or special), when it was debated,
amended if desired, passed "second reading," and finally passed its
third and final reading at once, being declared adopted. This was in
accordance with law.

Under the new State law, and decision of the Solicitor, a proposed
ordinance must be published after first reading, that people may know
what is intended. But why? It cannot be changed or amended after
publication, unless by perfecting by passing first, and later can only
be adopted or defeated, as it is. The intermediate (second) reading,
where amendments were made, has been rendered useless, yet not
repealed.

We like the idea of publication, but believe a mistake has been
made in not providing for amendment at some stage of proceeding after-
ward. Members may not see all phases of a question when it is new as
well as after a few days of consideration; and the people generally,
having read the ordinance, might give Council pointers through which
they could improve the work before final action.

Who has a room to spare, centrally located, for the use of the Red
Cross Society? They need one, and are dependent upon a free-will
offering, having no funds for rent of headquarters. Speak quick!

A. T. D'Agostino is another of those "Jersey Peach" growers who
believes in remembering the Editors with fine samples.

If you want a "big time" on Labor Day, respond to the Finance
Committee's appeal.

SHERIFF'S SALE.

By virtue of a writ of fieri facias to me
directed, issued out of the Hon. Justice Court
at Chancery, will be sold at public vendue, on
THURSDAY, THE NINETEENTH DAY
OF SEPTEMBER, NINETEEN HUNDRED
AND SEVENTEEN, at ten o'clock in the forenoon, at the
door of the Court House, in the City of New York,
all that certain lot or lots of land, situate, lying and
being in the Town of Hammoncton, County of
Atlantic, State of New Jersey, and bounded and
described as follows, to-wit:

Lot 1, known as the New, L. A. & T. and
known as the New, L. A. & T. and known as the
New, L. A. & T. and known as the New, L. A. & T.

Containing a point in the Northern line of
Pleasant Street one hundred and fifty feet
from the Southern side of Union Street running
along Pleasant Street Northwesterly to Union
Street, thence Northwesterly and parallel with Union
Street one hundred and fifty feet to the
Southern line of the New, L. A. & T. and known as the
New, L. A. & T. and known as the New, L. A. & T.

Containing a point in the Northern line of
Pleasant Street one hundred and fifty feet
from the Southern side of Union Street running
along Pleasant Street Northwesterly to Union
Street, thence Northwesterly and parallel with Union
Street one hundred and fifty feet to the
Southern line of the New, L. A. & T. and known as the
New, L. A. & T. and known as the New, L. A. & T.

Containing a point in the Northern line of
Pleasant Street one hundred and fifty feet
from the Southern side of Union Street running
along Pleasant Street Northwesterly to Union
Street, thence Northwesterly and parallel with Union
Street one hundred and fifty feet to the
Southern line of the New, L. A. & T. and known as the
New, L. A. & T. and known as the New, L. A. & T.

Containing a point in the Northern line of
Pleasant Street one hundred and fifty feet
from the Southern side of Union Street running
along Pleasant Street Northwesterly to Union
Street, thence Northwesterly and parallel with Union
Street one hundred and fifty feet to the
Southern line of the New, L. A. & T. and known as the
New, L. A. & T. and known as the New, L. A. & T.

Containing a point in the Northern line of
Pleasant Street one hundred and fifty feet
from the Southern side of Union Street running
along Pleasant Street Northwesterly to Union
Street, thence Northwesterly and parallel with Union
Street one hundred and fifty feet to the
Southern line of the New, L. A. & T. and known as the
New, L. A. & T. and known as the New, L. A. & T.

Containing a point in the Northern line of
Pleasant Street one hundred and fifty feet
from the Southern side of Union Street running
along Pleasant Street Northwesterly to Union
Street, thence Northwesterly and parallel with Union
Street one hundred and fifty feet to the
Southern line of the New, L. A. & T. and known as the
New, L. A. & T. and known as the New, L. A. & T.

Containing a point in the Northern line of
Pleasant Street one hundred and fifty feet
from the Southern side of Union Street running
along Pleasant Street Northwesterly to Union
Street, thence Northwesterly and parallel with Union
Street one hundred and fifty feet to the
Southern line of the New, L. A. & T. and known as the
New, L.

The Peoples Bank

Hammon, N. J.

Capital, \$50,000
Surplus and Undivided Profits, \$60,000

Three per cent interest paid on time deposits

Two per cent interest allowed on demand accounts having daily balance of \$1000 or more.

Safe Deposit Boxes for Rent

M. L. Jackson, President
W. J. Smith, Vice-Pres't
W. R. Tilton, Cashier
Wm. Doerfel, Asst. Cashier

DIRECTORS
M. L. Jackson, J. A. Waas
C. F. Osgood, George Elvins
Wm. J. Smith, J. C. Anderson
Sam'l Anderson, W. R. Tilton
John G. Galigne, Chas. Fitting
Wm. L. Black.

Walter J. Vernier
PLUMBING & HEATING
Contractor

Registered
Hammon, N. J.
Local Phone 904

Go Where you Will

Return and tell where you found
More Prompt and Efficient

Telephone
Service

Than you enjoy at home

At your Service Night and Day.

Hammon Telephone & Tel. Co.

A. J. RIDER, Pres't and Manager.

Philadelphia and Hammon
AUTO EXPRESS

Round trip daily. Orders received by Bell Phone 37-74

Philadelphia Office, 122 Market St.
Truck leaves Philadelphia office at one o'clock p. m.
Prompt Deliveries

Gardiner Brothers

Hammon Trust Co.

Capital, \$100,000

Surplus, \$14,000

Three pr cent on Time Accts.

Safe Deposit Boxes

Insurance

Money to Loan on Mortgage

Lakeview
Greenhouses

Central Ave., Hammon.

Large assortment of
Palms, House Plants,
Cut Flowers,
Funeral Designs
In fresh flowers, wax or metal

WATKIS & NICHOLSON
Florists and Landscape Gardeners.
Local Phone No. 1, Bell 1-17

Charles Davenport
Contractor & Builder

Estimates Furnished on All Kinds of Work.
All Work Given Prompt and Careful Attention.
Local phone. Peach St. Hammon

A call has come from Red Cross headquarters for knitters and workers on surgical supplies and garments. Thousands of articles are needed. Will not every woman at once realize the importance of this work, and rally to the cause. If you can knit, or have any spare time to devote to this work, please communicate with the Secretary, Miss Mary P. Conkey

Last Sunday morning, an auto from Paulsboro passed thro' town on the way to Atlantic City. Just below DaCosta, a sandy spot in the road caused the car to skid, and it struck a great telephone pole, wrecking the machine. Mr. Jas. Hewes, the owner, died in a few minutes, of a broken neck. Joseph Riley, driver, is in Cooper Hospital with a broken hip. Mrs. Hewes and Mr. and Mrs. Goodgenson, of Paulsboro, were injured; but the two Hewes children escaped without a scratch.

RESOLUTIONS.

The following was adopted by Little Ha-Ha Council, No. 27, D. of P., August 6th:

Whereas, it has pleased the Great Spirit to remove from our earthly hunting grounds our worthy sister Hannah Drown, therefore be it

Resolved, That in the loss of sister Drown we have lost a faithful member, whose removal has left a vacancy which can never be filled; and be it further

Resolved, That the deep sympathy of this Council be extended to her daughter in her bereavement. And be it further

Resolved, That these resolutions be entered on the minutes of this Council, and a copy be presented to her daughter.

JENNIE BURGESS,
KATE HELZER, } Com.
MARGARET GREEN,

DO YOUR BIT,

START TO KNIT,

FOR A SAILOR'S or

A SOLDIER'S KIT.

Get a Camera

AND

"Chum" with Nature.

A camera will cause you to get out of doors, where you may commune with Nature.

The fresh air, the sunlight, and recreation will do you good, to say nothing of the delights which you will encounter in taking pictures of the woods, streams, etc.

You may think that picture-making is an art which requires time to learn. This is not true when a modern camera is used. With one of our

UP-TO-DATE CAMERAS

An amateur can take wonderful pictures. All that is necessary is to get the object in the "finder," and press the bulb.

We carry a full line of "Anso" Cameras and supplies.

Central Pharmacy

J. T. KELLY

Fire Insurance At Cost!

The Cumberland Mutual
Fire Insurance Company

Will insure your property at less cost than others. Reason: operating expenses light; no loading of premium for profits; seventy-three years of satisfactory service. Cash surplus over \$135,000.

For particulars, see

Wayland DePuy, Agt., Hammon, N. J.
Cor. Second and Cherry Streets

JOHN PRASCH

Funeral Director
and
Embalmer

Automobile Funerals.

Twelfth St., bet. Railroads
Local Phone 892. Bell 47-7

Hammon, - N. J.

Seasonable Items

at Elvins' Store

Arsenate of Lead

Hose for Spraying

Nozzle and Sprayer Fixtures

Sulphur

Blue Stone

Paris Green

Field Spray Pumps

Plows, Harrows, Cultivators

Small Garden Tools



The Ford car makes its appeal to you in appearance as well as for service. Large radiator and enclosed fan, streamline hood, crown fenders, entire black finish, nickel trimmings, — up-to-date in all requirements for handsome appearance — and serving the people the world over as a money-saving, time-saving, labor-saving utility. It is surely your necessity. The Ford car is just as useful on the farm as it is in the city; just as necessary to the business man as it is to the professional man. More necessary to every man than ever before. Low purchase price and very economical to operate and maintain. Why not investigate? Touring Car, \$360; Runabout, \$345; Coupelet, \$505; Town Car, \$595; Sedan, \$645. f. o. b. Detroit.

Order your car now, to insure prompt delivery.

When you buy a Ford car you also buy Ford service.

We carry a complete line of parts for repairing Ford automobiles, and can do your work in first-class manner, promptly, and at a moderate fair price.

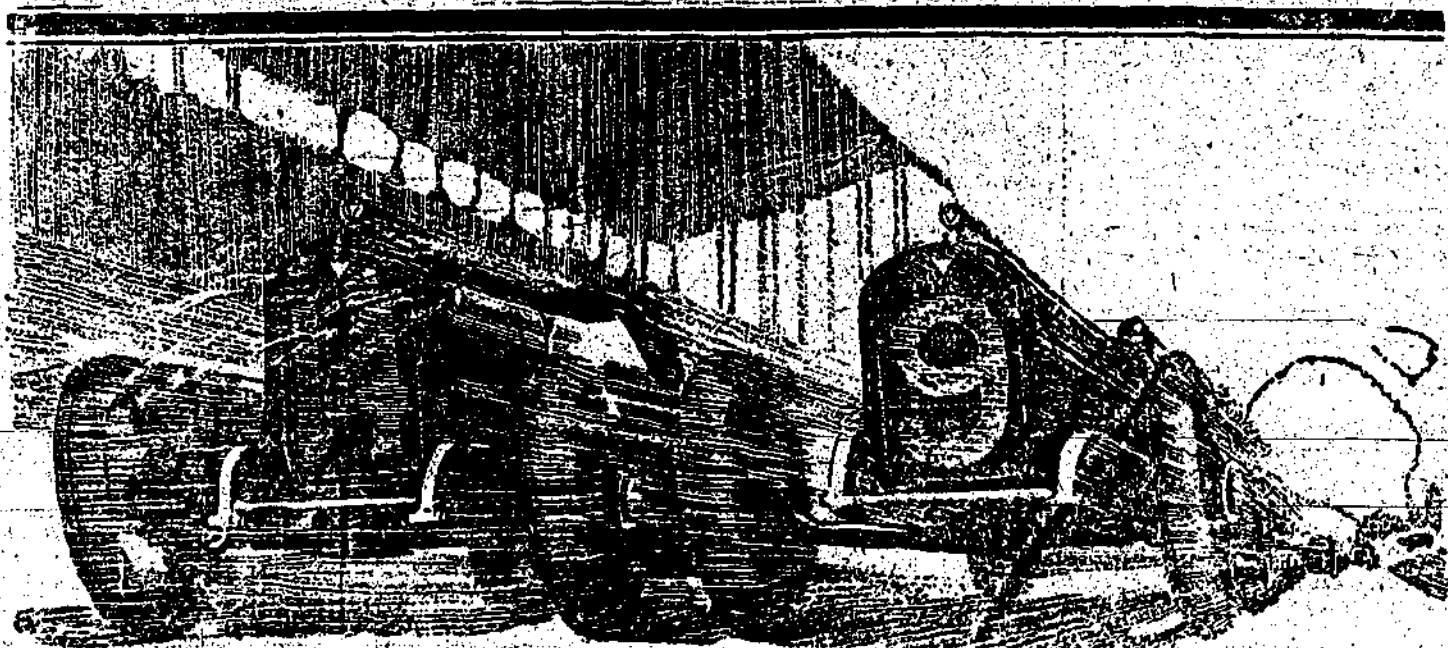
BELLEVUE GARAGE, Inc.

E. A. CORDERY, President.

Lose Anything? Then Advertise.

Bills receipted while you wait.

Hoyt & Son,
the Publishers.



Hudson Racing Records—

What They Should Mean To You

Speedway tests are endurance tests. The tremendous strains and stresses to which racing cars are put bring out the two most important qualities a car owner should demand—endurance and power.

In a few hours the speedway may show weaknesses that it would take miles of ordinary travel to reveal.

You will probably never want to own a racing car. You do, though, want a car that has endurance. You require performance not for a few but for thousands of miles. This year a team of racing cars proved endurance for the Hudson Super-Six on the speedway.

Endurance Proved on the Speedway

No team of racing cars has ever shown such a record for consistency.

In one event American speedway records for 150 and 200 miles were established at an average of 104 miles an hour.

Track records were established at Chicago, Cincinnati and Omaha. The fastest time ever recorded at Tacoma and Minneapolis was made by the Super-Six Special, and claims for track records will be considered by the American Automobile Association.

Here is the unmatched record of the Hudson Super-Six Specials in this year's nine championship races, held at Cincinnati, Chicago, Omaha, Tacoma, Uniontown and Minneapolis.

Twenty-two entries were made. All save one finished within the money; an accident forced that one car out.

Hudson Specials won first in four events; second in six; third in two; fourth in three; fifth in three; and sixth, seventh and eighth in one each.

All stock car and stock chassis records made by the Super-Six last year still stand although many attempts

have been made to lower some of them. Here is a partial list of Hudson stock performance:

Stock Car Records Also Prove Endurance

Fastest stock chassis mile—average 102 1/2 miles per hour.

1819 miles in 24 hours, exceeding all other records by 52%.

For 100 miles a stock car fully equipped, carrying two passengers, averaged 74.67 miles per hour.

The double transcontinental record was made by a seven-passenger Super-Six phaeton from San Francisco to New York and return—7000 miles in 10 days and 21 hours—a new record for both ways and the first round trip across America ever attempted against time.

And Now Other Cars Cost as Much as Hudsons

Cars which recently sold at \$1100 to \$1200 now cost almost as much as the Hudson Super-Six. Surely Hudson records for consistent endurance and their service to 37,000 owners make it the preferred car to any. Don't you prefer it to any costing \$2500 or under?

Price is not now an attraction except that there is no certainty that present prices can be continued on Hudsons. When present materials are exhausted there must be a readjustment on the basis of present material costs. Then real car worth will be established and Hudson prices will advance to a point where they more nearly represent true values.

Today you can buy a Hudson Super-Six made from materials bought last year. If you delay you must pay on the basis of the present market—the market which has forced other makers to raise their prices.



Hammon Auto Station, P. T. Ranere, Prop.