

South Jersey Republican

Hoyt & Son, Publishers.

Terms--\$1.25 Per Year.

VOL. 43

HAMMONTON, N. J., JULY 1, 1905.

NO. 26



Children are Important Customers

In our estimation. When they are sent to us on a trading errand we always remember that they are not discriminating buyers, and take special pains to see that they get what both you and they want. Then we always try to be prompt in waiting on them—there is always a little worry at home when they are sent on an errand and stay too long, often through no fault of their own.

W. J. LEIB, Druggist,
Hammonton.



HURRAH
for the FOURTH!

Town Council Meeting.

Regular meeting on Saturday eve'g, June 24th, with all members present. A petition was received, requesting Council to abate the nuisance (noise) caused by the Electric Company's gas engine. Referred to Committee on Fire, Water and Light, who are to confer with the company in regard to this racket, and the discharge of tar from the gas-house, which is allowed to flow over private property. If necessary, they are to call a special meeting of Council, for action.

Bills acted upon:

Highways	
John Allano	\$5 25
O C Combe	\$3 98
Gerard Allano	11 25
Ben Fogliano	1 50
Angelo Tundo	6 00
Gianino Tomasello	18 00
John Mondillo	1 05
W H Burgess, supplies	8 08
H McD Little, supplies	1 54
	\$36 65

Town Purposes	
H McD Little, supplies	\$1 75
J W Myers, marshal	24 00
A B Davis, 3 mos salary	125 00
Geo Bernabouse, 1 mo salary	10 00
W P Keyser, watchman	28 00
J L O'Donnell, 3 mos salary	60 00
J H Garton, telephone charges	75
Water rent	2 25
	\$241 75

Poor Fund	
Jackson & Son, goods	\$12 00
E Stockwell, goods	6 00
W L Black, goods	20 00
Alva Mockenhead, boarding	24 00
	\$62 00

General Surplus	
Mrs Miller, meals for prisoners	\$2 25
Street Lights	
Bill for June	\$127 54
Fire Department	
H McD Little, supplies	\$1 45
Spraying trees	
H McD Little, pump, hose, etc	\$82 23
Jas Good, chemicals	15 05
Labor	67 60
	\$164 88

Special	
Dr. Crowell, examining insane man	\$5 50
Dr. Burt, same	5 00
Geo Bernabouse, expenses to asylum	9 75

Overseer of the Poor instructed to send bill of expenses in insane case to Hamilton Township, where the afflicted man resided.

There was considerable discussion about farmers infringing on streets. Referred.

Mr. Batchelor introduced an ordinance granting franchise to the Hammonton Telephone and Telegraph Co. Passed first reading, and referred to Committee of the Whole for final action. Date of meeting not fixed.

Gravel offered free for a portion of Weymouth Road, provided Council will do the work.

Attorneys French & Richards sent written opinion that the payment of salaries to active firemen is optional with Council. Referred to Committee of the Whole, who will meet with a committee of firemen.

Permission granted to Red Men to parade on July 4th; also to an Italian Society to parade July 17th (Monday) on the same conditions as last year. Adjourned.

In Tea and in Coffee

MARSHALL

Is the man who can suit you.

If you want to enjoy your breakfast try his

25 cent Blend Coffee

14 cent Blend Coffee

10 cent Blend Coffee

8 cent Blend Coffee

6 cent Blend Coffee

4 cent Blend Coffee

2 cent Blend Coffee

1 cent Blend Coffee

1/2 cent Blend Coffee

1/4 cent Blend Coffee

Call and Examine our New Line of Goods before purchasing elsewhere

Special Sale of Millinery at half-price.

I still have the competent services of Miss Estella Wescoat, formerly with L. E. Gallagher, 1619 Chestnut St., Phila.
Children's Trimmed Leghorn Hats, \$1.15 and \$1.50
A fine assortment of Ladies' Shirt-waists ready for your inspection,—from 35 cents upward.
Ladies' Chandra Shirt-waist Suits, \$1.45, regularly \$2.25
Ladies' linen trimmed Shirt-waist Suits, \$5, regularly \$7
Ladies' White Mohair Skirts, \$3.45, regularly \$5
Ladies' Blue, Brown, Black Mohair Skirts, \$1.95
Ladies' Trunked Skirts, white and black, \$1, regularly \$1.50
Ladies' Washable Skirts, 90 cents, regularly \$1.25
Misses' and Children's white and colored Dresses, from 25 cents to \$4.50
Our Motto: Quick Sales and Small Profits.

Mrs. Geo. W. Leech, Hammonton

Trowbridge Building, Bellevue Avenue.

NOTICE TO CREDITORS.

Estate of Ernestine Stockwell, Dec'd.
Pursuant to the order of Emanuel C. Shaner, Surrogate of the county of Atlantic, made on the twenty-ninth day of May, nineteen hundred and five, on the application of the undersigned, executor of said decedent, notice is hereby given to the creditors of the said decedent, to exhibit to the subscriber, under oath or affirmation, their debts, demands, and claims against the estate of the said decedent, within nine months from said date, or they will be forever barred from prosecuting or recovering the same against the subscriber.
ERNESTINE STOCKWELL, Executor.
Moses Stockwell, Executor.
Dated June 3rd, 1905.

Leaky tin roofs

Repaired

by

WILLIAM BAKER.

No. 25 Third Street,

Hammonton.

Go to BANK BROTHERS for Clothing

This is the statement you will hear from those who have bought Clothing of us. Taking advantage of the time in the year, we have just received a splendid assortment of men's and young men's fine two-piece suits, which are just what every man wants, cool and dressy, in nice light goods. The manufacturer, thinking it too late for him to keep them, has sold the same to us so we can save you from two to three dollars on a suit.

Men's \$5.50 suits at \$3.50
Men's \$7.50 suits at \$5.00
Young men's \$6 suits at \$4.
Men's \$6.50 suits at \$4.50
Men's \$9.00 suits at \$6.00
Young men's \$5.50 suits, \$3.25.

If you think about a suit, come and look over our stock. First-class Merchant Tailoring, right in our store, by a man who devoted fifteen years to making clothes, so we feel safe in stating that we can fit you. Strictly custom-made Suits at \$12, \$15, \$18, and \$20

Notice. — All of our patrons who have purchased a suit from us are invited to bring same in, and we will press and clean it free of charge.

Men's fine Straw hats, in the finest straw and styles, from 45 cents to \$1.95.

Men's fine patent leather Shoes at \$1.95, Blucher cut.
Boys' fine russett Oxfords at \$1.50
Ladies' fine \$2 pat. colt Oxfords, Blucher cut, calf top, \$1.45
Ladies' \$2.25 russet Oxfords, no tip, — the most comfortable shoe to look dressy in,—regular \$2.25, marked \$1.50
\$1.50 Ladies' russet shoes, Cuban heels, to go at \$1.15
\$1.25 Children's patent leather Gibson ties and Sandals, at 85 cents,—1 1/2 to 2

Men's fine patent leather Shoes at \$1.95, Blucher cut.
Boys' fine russett Oxfords at \$1.50
Ladies' fine \$2 pat. colt Oxfords, Blucher cut, calf top, \$1.45
Ladies' \$2.25 russet Oxfords, no tip, — the most comfortable shoe to look dressy in,—regular \$2.25, marked \$1.50
\$1.50 Ladies' russet shoes, Cuban heels, to go at \$1.15
\$1.25 Children's patent leather Gibson ties and Sandals, at 85 cents,—1 1/2 to 2

Men's fine patent leather Shoes at \$1.95, Blucher cut.
Boys' fine russett Oxfords at \$1.50
Ladies' fine \$2 pat. colt Oxfords, Blucher cut, calf top, \$1.45
Ladies' \$2.25 russet Oxfords, no tip, — the most comfortable shoe to look dressy in,—regular \$2.25, marked \$1.50
\$1.50 Ladies' russet shoes, Cuban heels, to go at \$1.15
\$1.25 Children's patent leather Gibson ties and Sandals, at 85 cents,—1 1/2 to 2

Men's fine patent leather Shoes at \$1.95, Blucher cut.
Boys' fine russett Oxfords at \$1.50
Ladies' fine \$2 pat. colt Oxfords, Blucher cut, calf top, \$1.45
Ladies' \$2.25 russet Oxfords, no tip, — the most comfortable shoe to look dressy in,—regular \$2.25, marked \$1.50
\$1.50 Ladies' russet shoes, Cuban heels, to go at \$1.15
\$1.25 Children's patent leather Gibson ties and Sandals, at 85 cents,—1 1/2 to 2

Men's fine patent leather Shoes at \$1.95, Blucher cut.
Boys' fine russett Oxfords at \$1.50
Ladies' fine \$2 pat. colt Oxfords, Blucher cut, calf top, \$1.45
Ladies' \$2.25 russet Oxfords, no tip, — the most comfortable shoe to look dressy in,—regular \$2.25, marked \$1.50
\$1.50 Ladies' russet shoes, Cuban heels, to go at \$1.15
\$1.25 Children's patent leather Gibson ties and Sandals, at 85 cents,—1 1/2 to 2

Men's fine patent leather Shoes at \$1.95, Blucher cut.
Boys' fine russett Oxfords at \$1.50
Ladies' fine \$2 pat. colt Oxfords, Blucher cut, calf top, \$1.45
Ladies' \$2.25 russet Oxfords, no tip, — the most comfortable shoe to look dressy in,—regular \$2.25, marked \$1.50
\$1.50 Ladies' russet shoes, Cuban heels, to go at \$1.15
\$1.25 Children's patent leather Gibson ties and Sandals, at 85 cents,—1 1/2 to 2

Men's fine patent leather Shoes at \$1.95, Blucher cut.
Boys' fine russett Oxfords at \$1.50
Ladies' fine \$2 pat. colt Oxfords, Blucher cut, calf top, \$1.45
Ladies' \$2.25 russet Oxfords, no tip, — the most comfortable shoe to look dressy in,—regular \$2.25, marked \$1.50
\$1.50 Ladies' russet shoes, Cuban heels, to go at \$1.15
\$1.25 Children's patent leather Gibson ties and Sandals, at 85 cents,—1 1/2 to 2

Men's fine patent leather Shoes at \$1.95, Blucher cut.
Boys' fine russett Oxfords at \$1.50
Ladies' fine \$2 pat. colt Oxfords, Blucher cut, calf top, \$1.45
Ladies' \$2.25 russet Oxfords, no tip, — the most comfortable shoe to look dressy in,—regular \$2.25, marked \$1.50
\$1.50 Ladies' russet shoes, Cuban heels, to go at \$1.15
\$1.25 Children's patent leather Gibson ties and Sandals, at 85 cents,—1 1/2 to 2

Men's fine patent leather Shoes at \$1.95, Blucher cut.
Boys' fine russett Oxfords at \$1.50
Ladies' fine \$2 pat. colt Oxfords, Blucher cut, calf top, \$1.45
Ladies' \$2.25 russet Oxfords, no tip, — the most comfortable shoe to look dressy in,—regular \$2.25, marked \$1.50
\$1.50 Ladies' russet shoes, Cuban heels, to go at \$1.15
\$1.25 Children's patent leather Gibson ties and Sandals, at 85 cents,—1 1/2 to 2

Men's fine patent leather Shoes at \$1.95, Blucher cut.
Boys' fine russett Oxfords at \$1.50
Ladies' fine \$2 pat. colt Oxfords, Blucher cut, calf top, \$1.45
Ladies' \$2.25 russet Oxfords, no tip, — the most comfortable shoe to look dressy in,—regular \$2.25, marked \$1.50
\$1.50 Ladies' russet shoes, Cuban heels, to go at \$1.15
\$1.25 Children's patent leather Gibson ties and Sandals, at 85 cents,—1 1/2 to 2

Men's fine patent leather Shoes at \$1.95, Blucher cut.
Boys' fine russett Oxfords at \$1.50
Ladies' fine \$2 pat. colt Oxfords, Blucher cut, calf top, \$1.45
Ladies' \$2.25 russet Oxfords, no tip, — the most comfortable shoe to look dressy in,—regular \$2.25, marked \$1.50
\$1.50 Ladies' russet shoes, Cuban heels, to go at \$1.15
\$1.25 Children's patent leather Gibson ties and Sandals, at 85 cents,—1 1/2 to 2

Men's fine patent leather Shoes at \$1.95, Blucher cut.
Boys' fine russett Oxfords at \$1.50
Ladies' fine \$2 pat. colt Oxfords, Blucher cut, calf top, \$1.45
Ladies' \$2.25 russet Oxfords, no tip, — the most comfortable shoe to look dressy in,—regular \$2.25, marked \$1.50
\$1.50 Ladies' russet shoes, Cuban heels, to go at \$1.15
\$1.25 Children's patent leather Gibson ties and Sandals, at 85 cents,—1 1/2 to 2

Watch this Space

Next Week.

L. FRANK HORNE, Auctioneer.

We carry a line of

Plows

and

Castings

Cultivators
Diamond Harrows
Wheelbarrows
and small Garden Tools—
Rakes
Hoes
Drags.

If you need

Fertilizer

for any crop, call on us.

Our stock comprises—

Mapes' Complete Manures,
The Taylor Provision Company's Special Potato and Corn and Truck Manures,
Fisfield's Pure Ground Fish Guano,
Berg's Raw Bone.

GEORGE ELVINS.

ICE CREAM

Every Day

at

SMALL'S

BAKERY

Cor. Second and Bellevue,

Hammonton.

DR. C. E. DARE,

DENTIST

Office Hours: 8:30 a.m. to 12, 1:30 to 5 p.m.
Evening by engagements.
100 Bellevue Ave., Hammonton.

Harness, Blankets,
Robes, Whips,

Trunks, etc.

At L. W. COGLEY'S.

JOS. H. GARTON,
JUSTICE of the PEACE

Notary Public, Commissioner of Deeds

Hammonton, N. J.

Office at Residence, Middle Road.

DR. J. A. WAAS,

Resident Dentist

Cogley Building, Hammonton, N. J.

This Coupon May Help You

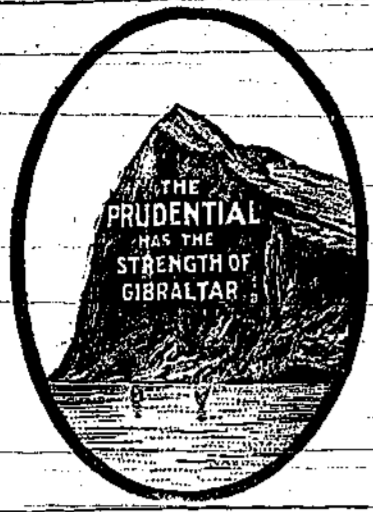
To decide that matter of Life Insurance. One of the best investments in the world is Endowment Insurance. Send Coupon to-day for information.

Fill out Coupon and mail to The Prudential, Home Office, Newark, N. J.

Without committing myself to any action, I shall be glad to receive free particulars and rates of Endowment Policies.

Name _____ Age _____
Address _____
Occupation _____

The Prudential Insurance Company of America
Incorporated as a Stock Company by the State of New Jersey.
JOHN F. DRYDEN, Pres't. EDGAR B. WARD, 2nd V. P.
LESLIE D. WARD, Vice-Pres't. EDWARD GRAY, Sec'y.
FORREST F. DRYDEN, 3rd Vice-Pres't.



Cool Drinks for Warm People.
Humidity is beginning to perspire once more.
Our 32-degree Soda Water is balm for the heated passer-by.
Pure Fruit Syrups and just right Soda Water is our motto.

Prescriptions accurately compounded

RED CROSS PHARMACY

BIG SALE OF MEN'S SUITS and TROUSERS

Just now we are rounding up the small lots (and some of the big lots that were side-tracked) of men's spring suits. If you can spare a few minutes you can get an ideal summer suit, with a good portion of the price lopped off.

Men's \$18.00 Suits are \$14.00.
Men's \$16.50 Suits are \$13.50.
Men's \$15.00 Suits are \$12.00.
Men's \$12.00 Suits are \$8.50.

The same kind of saving in men's trousers, 2000 pairs reduced.

The \$6.00 Trousers are \$4.00.
The \$5.00 Trousers are \$3.50.
The \$4.00 Trousers are \$2.75.
The \$3.50 Trousers are \$2.50.

CLEARANCE SALE OF SUITS FOR BOYS

We have more suits for boys than we need to have at this season of the year. Beginning this morning we make new prices—and such prices that the entire lot ought to change owners very quickly—the fabrics are Worsted, plain Chevrons, fancy Chevrons and Serges.

Boys' three-piece sack Suits (jacket, vest and trousers), 10 to 16 years, reduced as follows: \$7.50 suits for \$4; \$6.50 suits for \$3.25; \$5 suits for \$2.50.

Stout Suits (two piece) for Boys, 12 to 16 years—(and by the way "stout" suits are very hard to find in most stores)—\$6.50 and \$7.50 suits are \$5, and in both the single and double-breasted models.

Boys' Sailor Blouse Suits (jacket and trousers), 3 to 12 years, \$6.50 suits are \$3.25; \$5 suits are \$2.50.

One lot of 100 suits in this style, representing one or two of a kind at \$2; worth three times as much as we ask.

Boys' double-breasted Sack Suits (two piece), 6 to 16 years, mostly small lots to clean up styles that were fine values—\$7.50 suits are \$4.00; \$6.00 suits are \$3.25; \$5.00 suits are \$2.50; \$4.00 suits are \$2.00.

CARFARE TO PHILADELPHIA

If you purchase a certain amount here and show your return ticket, we pay your carfare both ways.

Wanamaker & Brown
OAK HALL
S. E. Cor. Sixth and Market Sts., Philadelphia

The Republican.

(Entered as second class matter.)
SATURDAY, JULY 1, 1905

NEW FIRE-PLUGS.

In addition to the forty-eight fire hydrants previously located by the REPUBLICAN, there are twelve new ones, to be found as follows:

On Central Avenue—
At G. E. Chaffin's
Between Brett and Earl places
At Lakeview Greenhouse
Below Geo. W. Nicholson's
At the W. H. French place
First Road—
Corner of Twelfth Street
Corner of Passmore Ave.
Railroad Avenue—
In Bernhouse's lumber yard, north of the mill
Egg Harbor Road—
Near E. A. Cordery's
13th St. (Foglietti's new hotel)
Grape Street—
At A. J. Faunce's
Corner Valley Avenue.

LOCAL TELEPHONE.

The stockholders' meeting was held on Tuesday evening, June 27th, in Firemen's Hall, with a good representation present.

Election of Directors was first in order, and resulted as follows:

For one year—Geo. Ely, E. H. White, B. W. Richards, Wm. Colwell, Two years—L. H. Parkhurst, C. F. Osgood, W. L. Black, E. S. Meade. These, with five previously elected by the incorporators, and named below, constitute the Board of Directors, who represent the Company, meet every month, and transact the real business.

Three years—A. J. Rider, Samuel Anderson, M. L. Jackson, L. Frank Horne, R. J. Byrnes. Resolutions were passed authorizing the issue of stock; also, to call for a twenty per cent installment of capital. The Directors held a meeting, and elected the following officers:

President, A. J. Rider.
Vice-President, M. L. Jackson.
Secretary, L. Frank Horne.
Treasurer, Samuel Anderson. These officers will also constitute the Executive Committee.

An office and business room have been rented, temporarily, in the J. L. O'Donnell building.

Everything looks favorable, so far, for a successful business.

The Hammoniton TELEPHONE and Telegraph Co.

The above Company, which has been recently organized, proposes to supply what has long been needed in Hammoniton, viz: an up-to-date telephone plant. The Central office will be equipped with the most modern appliances, and the construction throughout will be strictly first-class.

The Exchange will be open at all times, and the service continuous.

The Directors have been authorized to receive subscriptions to the capital stock to the amount of \$15,000. About \$5,000 has already been subscribed by our citizens, and it is desired that the entire capital shall be supplied hereafter, so that it may be purely a home enterprise.

The shares are \$25 each, and it is hoped that every user of a phone will become a subscriber to the extent of at least one share of stock.

Subscriptions for stock or phones will be received at the office, No. 1 Egg Harbor Road, or by any of the Directors—A. J. Rider, Sam'l Anderson, L. Frank Horne, R. J. Byrnes, L. H. Parkhurst, E. S. Meade, Geo. Ely, O. F. Osgood, W. L. Black.

Republican and Tribune Farmer one year each, for \$1.25

To Contractors.

Bids for building an addition, 12 x 20 feet, to the frame public school house in Agricultural District situated at Darnest Avenue and Moss Mill Road, near Egg Harbor City. All bids must be in the hands of the District Clerk by July 15th, 1905. Envelopes covering bids must be sealed and plainly marked on the outside "Bids for addition to Agricultural School-house," with name and address of bidder underneath.

The Board retains the right to reject any or all bids.

For specifications and additional information, apply to W. MAURER, Dist. Clerk, Egg Harbor, N. J., June 17, 1905.

WEDDING GIFTS

A choice collection of

CORHAM SILVER

A name synonymous with beauty of design, integrity of material, and perfection of workmanship.

For those who do not desire silver, I have added a choice collection of Art Pottery. "Louvella Ware,"—\$1.75 to \$5.

ROBERT STEEL,

Your Jeweler and Optician.

Promptness and Accuracy—the two features of all our repairing.

Fourth of July!

Are your Shoes the kind that will keep your feet comfortable through that hot day?

If not likely, we can fit you with such.

T. B. PAULLIN,

214 Bellevue Ave., Hammoniton.

Fireworks!

Fire Crackers!

Torpedoes!

We have the largest assortment of FIREWORKS ever displayed in town.

Come in and look them over before the assortment is broken.

E. A. CORDERY

At Eckhardt's Market

will be found a full line of

Beef, Pork, Veal, and Mutton

of the best quality. Our Hams, Bacon, and Smoked Sausages are surpassed by none.

PRICES RIGHT

City Dressed Meats

My own make of Sausage and Scrapple.

VEGETABLES

CANNED GOODS

H. L. MCINTYRE.

The Expense of a Gas Range

Is confined to the moments of actual use. When the cooking is done the expense ceases, if you turn off the flame; if you don't, it isn't the range that's extravagant.

Gas Ranges sold by Hammoniton Gas Co.

The Republican.

SATURDAY, JULY 1, 1905

G. A. E. Post meeting to-night. Picnic on the Fourth,—at the Park.

Miss Fannie Dean is visiting in Philadelphia.

City talent is promised next Tuesday night.

RESTAURANT FOR SALE. Good will, fixtures, and stock for sale at once. Apply at Anderson's Food Store.

Our railroad time-tables are all correct to date.

Mrs. Thos. White is visiting her sister, in Camden.

Look out for advertisement of tax sale, next Saturday.

A flying Machine Festival—If you use Kohn's Bread, Ask Leonard about it.

Mr. Frank R. Erwin entertained his brother over Sunday.

The Italians are collecting money for Our Lady's Day, July 17th.

Elam Stockwell and family spent most of the week at Ocean Grove.

REMINISCENCES for the 4th. Should the ice cream stand is still doing business at the old stand, next to Post Office, where he will have a large assortment of fresh candies, including Lowrey's, Wascott's, and other cakes, and our own make of ice cream, several flavors. Send in your orders early.

Mrs. Kent and family have rented the Newcomb house for the summer.

C. S. Newcomb and family are domiciled in Ocean City for the summer.

Miss Elizabeth Hoyle will spend the summer with relatives in Atlantic City.

MILLINERY. Hats made and trimmed to order, also a line of fashionable hats at reasonable prices. Mrs. KATHIE L. DAVIDSON, 214 Second Street.

Mrs. E. M. Fairchild is spending a couple of weeks with her sister, Mrs. Galahader.

Osgood & Co.'s factory will be closed all next week, to allow repairs to their boilers.

SALES—A baby coach. Also Victor No. 10, in good condition. Inquire at this office.

Geo. W. Bassett states that the young scale louse is succumbing to the spraying liquid.

H. C. Bobst has given up his stand on the County Road, and located with Jas. Edwards.

LATE Cabbages and Tomato plants. Mrs. G. J. SEXTON, Hammoniton, N. J.

Very cool nights, this week. Frost was feared for Wednesday and Thursday morning.

The great timber, 8x12 inches, 24 feet long, for the new school house, arrived on Thursday.

A Good cook for sale—cheap. Mrs. G. J. SEXTON, Hammoniton, N. J.

Where are the mosquitoes? It is suggested that perhaps the little gill snail drove them away.

The Ballback family, from Camden, will occupy the Saxton residence for the summer months.

FIREWORKS. Free, small and wagon load state that they have a large stock of fireworks for sale behind Lena's Barber Shop.

Leas Associations meet next week. Workingmen on Monday eve, and the Hammoniton on Thursday.

Watch out for a concert to be given by local and city talent, about the last of September, by the Frobenians.

HIGHEST PRIZE paid for all kinds of old junk in large or small quantities. Send postal and I will call. W. E. LEBLANC, Hammoniton, N. J.

Remember the DaCosta School entertainment to-night. A good program. If stormy, will be held Monday night.

Squire Garion tied another knot on Thursday. The parties were, Mr. Diego Pulco and Miss Katie Sacco, both of Hammoniton.

PRIVATE TUTORING. I will give private instruction, this summer, to a few students who desire to prepare for college or for teachers' examinations. Address J. E. ROY, Hammoniton.

Mrs. H. R. Monfort has as her guests her mother, Mrs. G. D. Lambeth, and friend, Mrs. S. A. Powell, both of Richmond, Va.

George Bishop, an employe in the gas-house, was severely burned about the face, by an explosion of gas, Friday morning.

The Famous Little Pills "Early Risers," cure constipation, sick headache, indigestion, etc. They give sleep or awaken, and impart early rising energy. Good for children or adults. Sold by Mallick & Pierce.

Frank Emery, sexton in Green-nwood Cemetery, is building an addition to the house occupied by him, on the cemetery grounds.

It is a pity that there were not enough patriotic citizens to encourage a parade on next Tuesday. As it is, there will be none.

Share with the A. H. Phillips Co., Mattison Building, Atlantic City.

Half of 1905 gone!

Miss Emma Logan, of Philadelphia, and Miss Elizabeth Rennebaum, of Williamstown, were entertained by the Misses Burgess, the past week.

Legal proceedings were instituted and Geo. O. Foster, an aged man, purchased, will be taken by Constable Bernhouse to his former home, Andover, Mass.

When ever you feel impending ill, no other one will fill the bill. Like DeWitt's Little Early Risers. The famous little pills, "Early Risers," cure constipation, sick headache, indigestion, etc. They give sleep or awaken, and impart early rising energy. Good for children or adults. Sold by Mallick & Pierce.

Mrs. Wm. E. Lubens, of Germantown, a sufferer from tuberculosis, died last week Friday, at her residence, corner of Central Avenue and Grape Street.

The W. C. T. U. will hold a cake sale in Firemen's Hall this afternoon, from 5 to 5 o'clock p.m. In the evening they will sell cake, lemonade, and ice cream.

Mrs. Saxton and daughter, Miss Mary, start to-day for Michigan, going by way of Niagara Falls, where they will stop for a view of this natural wonder.

It is estimated that the census now about completed will show an increase of nearly thirty per cent in the population of Hammoniton during the past five years.

DeWitt's Little Early Risers penetrates the pores of the skin, and by its antiseptic, rubefacient and healing influence it cures itching, eruptions, and other skin diseases, such as eczema, ring worm, and all skin diseases, including piles. The original and genuine DeWitt's Little Early Risers are made by Dr. J. C. DeWitt & Co., and sold by Mallick & Pierce.

Last Saturday's ball game with the Cedar Brook team resulted in a victory for our boys, 6-4. Time and space would not allow us to publish the game in detail.

Quite an excitement was caused on Wednesday, at Vine Street and the County Road. A horse, frightened by an automobile, shied on top of a cart.

No one was injured except the Laxative principle, and is original with Kennedy's, and is expelling colic from the system by gently moving the bowels. Best for coughs, colds, croup, etc. Sold by Mallick & Pierce.

Miss Grace Henderson, of Philadelphia, will spend a few days with her grandparents, Mr. and Mrs. Daniel Westcott. Her brother Edward has been there for some time.

The New England Club enjoyed a very pleasant evening at the residence of Mr. and Mrs. Manly Austin, Thursday evening. The next will be held at Mr. and Mrs. Geo. S. Turner's.

Now food must be properly digested and assimilated to be of any value to the system. It is "weak or diseased" that Kodol Dyspepsia Cure. It digests what you eat and gives the stomach a rest, enabling it to recuperate, take on new life and grow strong again. Kodol cures sour stomach, gas, bloating, heart palpitation, and all digestive disorders. Sold by Mallick & Pierce.

Mr. and Mrs. H. Dickson and son, of Philadelphia, will spend the summer at the Erwin Cottage. Joseph Lovel also of Philadelphia, will spend a month at the same comfortable home.

A fine horse belonging to Joe S. Mart caught its hoof on the Reading tracks, Wednesday, and in trying to free itself was badly injured. Hopes are entertained by Dr. Black of saving the animal.

Digest all classes of food, tones and strengthens the stomach and digestive organs. Cures dyspepsia, indigestion, flatulency, and makes rich red blood, healthy and strength. Kodol Dyspepsia Cure restores the worn-out system. Gov. G. W. Allen of W. Va., says: "I have used a number of bottles of Kodol Dyspepsia Cure and have found it to be very effective, and indeed a powerful remedy for stomach ailments." I recommend it. My friends." Sold by Mallick & Pierce.

The daily papers stated that Councilman Manly Austin's bicycle was stolen last Saturday night, from in front of the Council Room. It was missing for a time, but turned up later, in safe hands.

The Red Men have posters out, announcing an all-day picnic on the Fourth, (in the Park, of course), with an entertainment and dance in the evening, and a display of fireworks. Every one will be welcomed.

Postmaster Jackson has taken out one hundred and fifty call boxes, on the new telephone line, and is already placing them and moved some of the other fixtures, making things more convenient for both parties and employes.

That marriage published last week created considerable interest. It seems, the lady is a daughter of a prosperous business man in Philadelphia, who opposed her marriage. She came here, joined her lover, and was married. The father was very angry, uttering diabolical threats, but was calmed down, the mother coming hither and taking both parties home, where all will be forgiven with a "kiss you my children, if you are both good."

Handsome and Ornament is the kind you will see. Variety will please, and so will price. For summer, present, and another wear, our present stock is the finest shown.

W. O. JONES
The Watchmaker.

Hard, happy Lohigh. Chestnut, \$2.25 a ton. Other grades as low as \$1.25. Pan Coal, three kinds, \$1.25.

H. L. MONFORT
Second St., 1 square west of Post-office.

Coal

Hard, happy Lohigh. Chestnut, \$2.25 a ton. Other grades as low as \$1.25. Pan Coal, three kinds, \$1.25.

H. L. MONFORT
Second St., 1 square west of Post-office.

Coal

Hard, happy Lohigh. Chestnut, \$2.25 a ton. Other grades as low as \$1.25. Pan Coal, three kinds, \$1.25.

H. L. MONFORT
Second St., 1 square west of Post-office.

Coal

Hard, happy Lohigh. Chestnut, \$2.25 a ton. Other grades as low as \$1.25. Pan Coal, three kinds, \$1.25.

FIREWORKS!

You will find the

Finest Assortment

that has ever been in town

At PATTEN'S.

Hose

We have a good assortment

of Ladies', Gent's, and Children's

PLAIN and FANCY HOSE,

from 5 cents per pair to 50 cents.

Our Specialties are the 12 1/2 and 25 cent grades, and we have many styles of each, in Tan, White, and Black; plain, ribbed, and lace stripe.

W. L. BLACK.

GAS STOVES

At Little's Store.

call at the store and see these up-to-date stove in actual operation. Gas is to be the popular and most convenient fuel for cooking.

Ranges, with two ovens, and several other varieties. Prices to correspond with style.

H. McD. LITTLE

Cor. Bellevue and Central Aves., Hammoniton.

We will close at 10 o'clock, Fourth of July.

No orders will be solicited that morning,

but we will deliver all orders

left at the store.

Be patriotic by preparing for the

Fourth on the day before.

M. L. Jackson & Son.

OLD Favorites

Somebody's Darling. Into a ward of the whitewashed walls. Where the dead and dying lay. Wounded by bayonets, shells and bullets. Somebody's Darling was borne out on a stretcher.

Matted and damp are the curls of gold. Kissing the snow of that fair young brow. Pale are the lips of delicate mold. Somebody's Darling is dying now. Back from his beautiful blue-blinded eyes.

Brush all the wandering waves of gold. Cross his hands on his bosom now. Somebody's Darling is still and cold. Wear a ring on his pale, sweet face. Soon to be hid by the dust of the grave. The lingering light of his boyhood's grace.

God knows best. He was Somebody's love. Somebody's heart consumed him there. Night and morn on the wings of prayer. Somebody's heart when he marched away. Looking so handsome, brave and grand.

Somebody's love on his forehead lay. Somebody's kiss to his parted hair. Somebody's smile and watching for him. Yearning to hold him again to her heart.

And the smiling childlike lips eyes. Tenderly bury the fair young dead. Carry on the wooden slab at his head. "Somebody's Darling slumbers here."—Marie R. Leconte.

JAPANESE ADMIRAL FOLLOWS DEWEY'S MANILA TACTICS.

Rear Admiral Sotokichi Umi, who bore the brunt of fighting in the great naval battle in the Straits of Korea, followed about the same tactics Dewey employed at Manila. Admiral Umi was in command of the division of Japanese fleet and after the attack of the Russian ships under Nebogatoff, as a result of which the Russians were thrown into terror and thoroughly routed. Admiral Umi, the victor of



REAR ADMIRAL SOTOKICHI UMI.

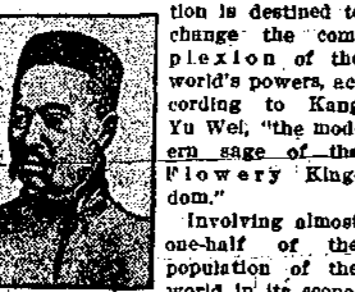
Chemnitz, who is 47 years old, graduated from the United States Naval Academy at Annapolis in 1881. He was a very old student at the Academy, on the Japanese side. His government picked him out as one of the cleverest, most daring students of the Japanese Naval Academy and sent him to this country to study. Before he came rear admiral he commanded the cruiser Matsushima and the first battle-ship Yamashiro, sunk a year ago during the war with China. He was a naval attaché at the Japanese embassy in Paris. Since his promotion he has been chief of the bureau of naval intelligence of the navy department, a post of great importance. He was a Japanese woman, a graduate of Vassar, formerly Miss Nagai, sister of one of the most prominent merchants of the empire.

Heighs to the right. "Do you believe in transmigration of souls?" inquired the man with a physical tendency.

"Why?" answered Mrs. Chemnitz. "I believe in it. I think it is a very old idea. I have no doubt it would be all right under some circumstances."—Wash. Post.

MAY TRANSFORM CHINA.

Kang Yu Wei, Driven from Empire, Expected to Return.



KANG YU WEI.

The transmigration of the Chinese dragon into the American eagle is the metaphorical problem which in its solution is destined to change the complexion of the world's powers, according to Kang Yu Wei, the most influential of the Flower Kingdom. Involving almost one-half of the population of the world in its scope, and entirely revolutionizing the industrial, educational and political methods of a nation whose calendar is reckoned by the thousands of years, and whose territory is greater than the whole of Europe, this transformation growing day by day to a culmination, may mean a new and powerful nation in the Far East. China is to be awakened from its lethargy of centuries.

Driven from his country, with a price of \$100,000 set upon his head by the Dowager Empress because of his reform doctrine, Kang Yu Wei, former prime minister and counselor to the Emperor, during his seven years of exile has been working a mighty force to hurl against the walls of stagnation and the temple of retrogression. Already he has built a system of education and military training among the Chinese in nearly every quarter of the globe, and the first steps of the reform advance have been taken. Working under the name and inspiration of the Chinese Empire Reform Association, fully 50 per cent of the Chinese in America are devoted to the education and military training which is to be the prime factor in the redemption of the Flower Kingdom. This alone represents about 100,000 Chinese, each being taught a new patriotism for a new China and broader fields of civilization.

Fleeing for his own life from China seven years ago, Kang Yu Wei has accomplished this and much more during the years of his exile. He has been a mate of going back to the service of the Emperor with material assistance to solve the problem of reform of a land of nearly 500,000,000 souls.

A WOMAN'S WIT.

A good illustration of the quick wit of a woman appears in the following of the old coaching days of the far West. The man of the tale does not show off in the best of lights, and did not deserve his reward. The coach was on its way over a lonely road, and carried among its passengers a lady going to join her husband and a man traveling by himself.

"I have one thousand dollars in my pocketbook," confessed the lone traveler to the lady, and I feel very uneasy. Would you mind concealing it in your dress? If we are held up they are less likely to search you." The lady consented and hid the roll of bills. Toward evening the shout of "thieve up your hands" came from the coach to a standstill, and four men masked and on horseback, demanded, at the point of the pistol, that all money should be immediately given up. The lone traveler handed over all his remaining cash, consisting of a few dollars, and was congratulating himself on his escape, when, to his horror, he heard the lady say:

"I have a thousand dollars here, but I suppose I must give them up," and without further hesitation she handed over the precious pile of greenbacks. The robbers rode off in high good humor, but as soon as they were gone the traveler lost his wrath. He aimed the lady in an unmeasured tone, and hardly stopped short of cutting her a coward. The accused said little, but when the end of the journey was reached she invited the angry man to her house.

"I shall have to accept," he said, "either, 'I haven't a cent in the world through your stupidity.'"

As he was dressing for dinner that night his host came to his room. "Here are the thousand dollars," he said, "which your wife captured for you. You see, she had twenty thousand dollars hid in her gown, and she thought it was your money. I thought it would save further search. Thank you for the hint, which saved me a heavy loss."

Heighs to the right. "Do you believe in transmigration of souls?" inquired the man with a physical tendency.

GOOD Short Stories

This story is told of a nice old resident of Brookline, who addressed a class of young women at an educational institution, and who advised them to go into the active life. "Go out and do something, be something," he exclaimed, "become fathers of men," and he wondered why the audience tilted.

James McNeill Whistler, the artist, stopped to question a particularly rugged and dirty sawdust in London. "How old are you?" said Whistler. "Seven, sir." "Oh, you must be more than that," "No, sir, I ain't." Turning to a friend who was with him, the artist said, "I don't think he could get that dirty in seven years, do you?"

"May the saints preserve ye," said an old woman who had been given a quarter by Representative Cooper of Wisconsin, "an' upon his head by the Dowager Empress because of his reform doctrine, Kang Yu Wei, former prime minister and counselor to the Emperor, during his seven years of exile has been working a mighty force to hurl against the walls of stagnation and the temple of retrogression."

Already he has built a system of education and military training among the Chinese in nearly every quarter of the globe, and the first steps of the reform advance have been taken. Working under the name and inspiration of the Chinese Empire Reform Association, fully 50 per cent of the Chinese in America are devoted to the education and military training which is to be the prime factor in the redemption of the Flower Kingdom. This alone represents about 100,000 Chinese, each being taught a new patriotism for a new China and broader fields of civilization.

Fleeing for his own life from China seven years ago, Kang Yu Wei has accomplished this and much more during the years of his exile. He has been a mate of going back to the service of the Emperor with material assistance to solve the problem of reform of a land of nearly 500,000,000 souls.

Fleeing for his own life from China seven years ago, Kang Yu Wei has accomplished this and much more during the years of his exile. He has been a mate of going back to the service of the Emperor with material assistance to solve the problem of reform of a land of nearly 500,000,000 souls.

Fleeing for his own life from China seven years ago, Kang Yu Wei has accomplished this and much more during the years of his exile. He has been a mate of going back to the service of the Emperor with material assistance to solve the problem of reform of a land of nearly 500,000,000 souls.

Fleeing for his own life from China seven years ago, Kang Yu Wei has accomplished this and much more during the years of his exile. He has been a mate of going back to the service of the Emperor with material assistance to solve the problem of reform of a land of nearly 500,000,000 souls.

Fleeing for his own life from China seven years ago, Kang Yu Wei has accomplished this and much more during the years of his exile. He has been a mate of going back to the service of the Emperor with material assistance to solve the problem of reform of a land of nearly 500,000,000 souls.

Fleeing for his own life from China seven years ago, Kang Yu Wei has accomplished this and much more during the years of his exile. He has been a mate of going back to the service of the Emperor with material assistance to solve the problem of reform of a land of nearly 500,000,000 souls.

Fleeing for his own life from China seven years ago, Kang Yu Wei has accomplished this and much more during the years of his exile. He has been a mate of going back to the service of the Emperor with material assistance to solve the problem of reform of a land of nearly 500,000,000 souls.

Fleeing for his own life from China seven years ago, Kang Yu Wei has accomplished this and much more during the years of his exile. He has been a mate of going back to the service of the Emperor with material assistance to solve the problem of reform of a land of nearly 500,000,000 souls.

Fleeing for his own life from China seven years ago, Kang Yu Wei has accomplished this and much more during the years of his exile. He has been a mate of going back to the service of the Emperor with material assistance to solve the problem of reform of a land of nearly 500,000,000 souls.

AN AMERICAN COFFEE POT.

A Contender for the Berry Attached to the Lid.

While most civilized nations have their characteristic coffee pots, the American has adopted them all. In some instances he has endeavored to combine the good points of each into a single machine, but coffee-making in this country appears to be a matter of individual taste, and what suits one individual does not please another, so that the American house-furnishing store offers a wide selection in coffee pots. There is a distinct tendency evident in all the improved designs to provide some means for removing the



AN AMERICAN COFFEE POT.

coffee at a predetermined point in the operation. Percolators, coffee bags and steamers are variations of this type. The illustration shows a novel means of attaining the same end. A cage, consisting of a perforated receptacle, is suspended from a hook attached to the cover of the pot. This has the advantage of permitting the coffee grounds to be removed conveniently and without danger of pouring the liquid. The metallic perforated cage is more conveniently cleaned than the coffee bag, which it is designed to replace. Of course, the pot can be used for tea as well as coffee, the cage taking the place of the familiar tea ball, the use of which avoids the extraction of the tannic acid compounded with the coffee, which gives to the well-known bitter taste.

How Islands Got Their Names.

When traveling among the islands of the Pacific or Atlantic one often wonders how it is that lands so far away from great continents have become covered with forests, but Darwin and other naturalists have solved the difficulty for us, says the House Beautiful.

Thus we learn from Darwin that he took from the foot of a woodcock a cake of dry earth in which was a seed of the lead rush. He planted the seed and it germinated and flowered.

Professor Newton sent him the leg of a partridge which had been wounded and unable to fly. Attached to it was a clod of earth weighing six and one-half ounces. He broke up the clod and placed it under the bell glass. No fewer than eighty-two plants sprang from it. It is the more interesting to know that the clod of earth contained the seeds of the lead rush, which he planted and it germinated and flowered.

One Day of It Enough.

A story is told of a young man who went to work for a string farmer out in Kansas. At 3 o'clock the next morning the farmer called him to begin the day's labor. A few minutes later the hired man went downstairs with his grip. "You ain't going to take that grip to work, are you?" asked the farmer. "No," replied the man eagerly, "but I am going to find some place to stay all night."

World Uses Barrell for Mail.

A barrel is nailed to a tree on a barren island in the Straits of Magellan on the southern coast of South America, and used as a postoffice. Ships passing there drop their mail in the barrel, and it is taken out and forwarded by the next ship which comes along bound in the direction of the Pacific address. Sailors have found a great convenience. It is international in character and all flags carry the mails from it free of charge. It is probably the only legitimate postoffice in the world without a postmaster.

Following Instructions.

A British officer, in his expense list and previous service, put down, "Porter, 2d." The war office, in a verbose and high-falootin' letter, pointed out that retrenchments, while on the reduction of public duty, were not to be made in the private life of the officer. The officer replied: "You should have put 'Porterage.' The officer treasured his hint. Next time he had occasion to take a hackney coach he put down in his accounts, "Coachage, 2d."

The truth is that if a woman went into the barbers' shop as the milk maid in the illustration, she would be a good deal more than a milkmaid.

Popular Science.

Photography is able to depict action so slow as the growth of a flower. By exposing a plant to a camera every quarter of an hour for sixteen days it is now possible to watch a bud open gradually, to see the blossoms close at night and reopen in the morning; to see the leaves increase in size and the stem push out.

United States Consul, Holloway at Halifax reports that two Nova Scotia men, one of them a blacksmith, have invented a process of hardening copper which is so successful that a razor made of the hardened copper may be used for shaving. It is asserted that the metal can be hardened to any desired degree. Tempering copper is popularly known as one of the "lost arts." The successful rediscovery of the process has been falsely reported so many times that this last morning will be received with some incredulity.

The gold dredges, which within the past few years have become numerous in the mining regions of the West, are described by the Technical World as "sea-locks which float upon the land, making their own floating docks and taking them with them as they go." These dredges sometimes carry 300 tons of machinery. Starting in an excavation, filled with water from an irrigating ditch sufficient to float them, they drive their way through the land, the water following, and the soil they take up passes through their sluices, where it leaves its sands of gold. One man, in a kind of pit-house, surrounded by levers, operates the whole apparatus at so slight a cost that sand containing one cent's worth of gold per cubic foot can be worked at a profit.

Professor Redard of Geneva, Switzerland, successfully employs music to soothe and tranquilize the dreams of persons who have taken ether or chloroform in order to undergo surgical operations. The music is begun as soon as the anesthetic begins to take effect, and is continued until the patient is awake. It is said that not only does this treatment prevent the hysterical effects sometimes witnessed, but the patient, on recovering, feels no nausea or illness. Professor Redard also uses blue light to neutralize opium. The light from a 15-candle-power electric lamp, furnished with a blue bulb, is concentrated upon the patient's eyes, but the light and the lamp are enveloped in a blue light, so that no extraneous light or heat is produced in two or three minutes.

From the time on Puget Sound, in the State of Washington, the eye ranges to the Olympic Mountains, whose peaks are visible from the extreme northern corner of the United States and their peaks and the great forest of the northwestern forest are clearly visible. Dr. H. S. Gannett, of the United States Geological Survey, has found that the Olympic range is 6,150 feet in elevation, but there are many peaks from 7,000 to 8,000 feet. The Olympic range is a rugged hill and in the valleys is very remarkable. Below the elevations of 5,000 feet the gigantic trees of the great northwestern forest are clearly visible. Dr. H. S. Gannett, of the United States Geological Survey, has found that the Olympic range is 6,150 feet in elevation, but there are many peaks from 7,000 to 8,000 feet. The Olympic range is a rugged hill and in the valleys is very remarkable. Below the elevations of 5,000 feet the gigantic trees of the great northwestern forest are clearly visible. Dr. H. S. Gannett, of the United States Geological Survey, has found that the Olympic range is 6,150 feet in elevation, but there are many peaks from 7,000 to 8,000 feet. The Olympic range is a rugged hill and in the valleys is very remarkable. Below the elevations of 5,000 feet the gigantic trees of the great northwestern forest are clearly visible. Dr. H. S. Gannett, of the United States Geological Survey, has found that the Olympic range is 6,150 feet in elevation, but there are many peaks from 7,000 to 8,000 feet. The Olympic range is a rugged hill and in the valleys is very remarkable. Below the elevations of 5,000 feet the gigantic trees of the great northwestern forest are clearly visible. Dr. H. S. Gannett, of the United States Geological Survey, has found that the Olympic range is 6,150 feet in elevation, but there are many peaks from 7,000 to 8,000 feet. The Olympic range is a rugged hill and in the valleys is very remarkable. Below the elevations of 5,000 feet the gigantic trees of the great northwestern forest are clearly visible. Dr. H. S. Gannett, of the United States Geological Survey, has found that the Olympic range is 6,150 feet in elevation, but there are many peaks from 7,000 to 8,000 feet. The Olympic range is a rugged hill and in the valleys is very remarkable. Below the elevations of 5,000 feet the gigantic trees of the great northwestern forest are clearly visible. Dr. H. S. Gannett, of the United States Geological Survey, has found that the Olympic range is 6,150 feet in elevation, but there are many peaks from 7,000 to 8,000 feet. The Olympic range is a rugged hill and in the valleys is very remarkable. Below the elevations of 5,000 feet the gigantic trees of the great northwestern forest are clearly visible. Dr. H. S. Gannett, of the United States Geological Survey, has found that the Olympic range is 6,150 feet in elevation, but there are many peaks from 7,000 to 8,000 feet. The Olympic range is a rugged hill and in the valleys is very remarkable. Below the elevations of 5,000 feet the gigantic trees of the great northwestern forest are clearly visible. Dr. H. S. Gannett, of the United States Geological Survey, has found that the Olympic range is 6,150 feet in elevation, but there are many peaks from 7,000 to 8,000 feet. The Olympic range is a rugged hill and in the valleys is very remarkable. Below the elevations of 5,000 feet the gigantic trees of the great northwestern forest are clearly visible. Dr. H. S. Gannett, of the United States Geological Survey, has found that the Olympic range is 6,150 feet in elevation, but there are many peaks from 7,000 to 8,000 feet. The Olympic range is a rugged hill and in the valleys is very remarkable. Below the elevations of 5,000 feet the gigantic trees of the great northwestern forest are clearly visible. Dr. H. S. Gannett, of the United States Geological Survey, has found that the Olympic range is 6,150 feet in elevation, but there are many peaks from 7,000 to 8,000 feet. The Olympic range is a rugged hill and in the valleys is very remarkable. Below the elevations of 5,000 feet the gigantic trees of the great northwestern forest are clearly visible. Dr. H. S. Gannett, of the United States Geological Survey, has found that the Olympic range is 6,150 feet in elevation, but there are many peaks from 7,000 to 8,000 feet. The Olympic range is a rugged hill and in the valleys is very remarkable. Below the elevations of 5,000 feet the gigantic trees of the great northwestern forest are clearly visible. Dr. H. S. Gannett, of the United States Geological Survey, has found that the Olympic range is 6,150 feet in elevation, but there are many peaks from 7,000 to 8,000 feet. The Olympic range is a rugged hill and in the valleys is very remarkable. Below the elevations of 5,000 feet the gigantic trees of the great northwestern forest are clearly visible. Dr. H. S. Gannett, of the United States Geological Survey, has found that the Olympic range is 6,150 feet in elevation, but there are many peaks from 7,000 to 8,000 feet. The Olympic range is a rugged hill and in the valleys is very remarkable. Below the elevations of 5,000 feet the gigantic trees of the great northwestern forest are clearly visible. Dr. H. S. Gannett, of the United States Geological Survey, has found that the Olympic range is 6,150 feet in elevation, but there are many peaks from 7,000 to 8,000 feet. The Olympic range is a rugged hill and in the valleys is very remarkable. Below the elevations of 5,000 feet the gigantic trees of the great northwestern forest are clearly visible. Dr. H. S. Gannett, of the United States Geological Survey, has found that the Olympic range is 6,150 feet in elevation, but there are many peaks from 7,000 to 8,000 feet. The Olympic range is a rugged hill and in the valleys is very remarkable. Below the elevations of 5,000 feet the gigantic trees of the great northwestern forest are clearly visible. Dr. H. S. Gannett, of the United States Geological Survey, has found that the Olympic range is 6,150 feet in elevation, but there are many peaks from 7,000 to 8,000 feet. The Olympic range is a rugged hill and in the valleys is very remarkable. Below the elevations of 5,000 feet the gigantic trees of the great northwestern forest are clearly visible. Dr. H. S. Gannett, of the United States Geological Survey, has found that the Olympic range is 6,150 feet in elevation, but there are many peaks from 7,000 to 8,000 feet. The Olympic range is a rugged hill and in the valleys is very remarkable. Below the elevations of 5,000 feet the gigantic trees of the great northwestern forest are clearly visible. Dr. H. S. Gannett, of the United States Geological Survey, has found that the Olympic range is 6,150 feet in elevation, but there are many peaks from 7,000 to 8,000 feet. The Olympic range is a rugged hill and in the valleys is very remarkable. Below the elevations of 5,000 feet the gigantic trees of the great northwestern forest are clearly visible. Dr. H. S. Gannett, of the United States Geological Survey, has found that the Olympic range is 6,150 feet in elevation, but there are many peaks from 7,000 to 8,000 feet. The Olympic range is a rugged hill and in the valleys is very remarkable. Below the elevations of 5,000 feet the gigantic trees of the great northwestern forest are clearly visible. Dr. H. S. Gannett, of the United States Geological Survey, has found that the Olympic range is 6,150 feet in elevation, but there are many peaks from 7,000 to 8,000 feet. The Olympic range is a rugged hill and in the valleys is very remarkable. Below the elevations of 5,000 feet the gigantic trees of the great northwestern forest are clearly visible. Dr. H. S. Gannett, of the United States Geological Survey, has found that the Olympic range is 6,150 feet in elevation, but there are many peaks from 7,000 to 8,000 feet. The Olympic range is a rugged hill and in the valleys is very remarkable. Below the elevations of 5,000 feet the gigantic trees of the great northwestern forest are clearly visible. Dr. H. S. Gannett, of the United States Geological Survey, has found that the Olympic range is 6,150 feet in elevation, but there are many peaks from 7,000 to 8,000 feet. The Olympic range is a rugged hill and in the valleys is very remarkable. Below the elevations of 5,000 feet the gigantic trees of the great northwestern forest are clearly visible. Dr. H. S. Gannett, of the United States Geological Survey, has found that the Olympic range is 6,150 feet in elevation, but there are many peaks from 7,000 to 8,000 feet. The Olympic range is a rugged hill and in the valleys is very remarkable. Below the elevations of 5,000 feet the gigantic trees of the great northwestern forest are clearly visible. Dr. H. S. Gannett, of the United States Geological Survey, has found that the Olympic range is 6,150 feet in elevation, but there are many peaks from 7,000 to 8,000 feet. The Olympic range is a rugged hill and in the valleys is very remarkable. Below the elevations of 5,000 feet the gigantic trees of the great northwestern forest are clearly visible. Dr. H. S. Gannett, of the United States Geological Survey, has found that the Olympic range is 6,150 feet in elevation, but there are many peaks from 7,000 to 8,000 feet. The Olympic range is a rugged hill and in the valleys is very remarkable. Below the elevations of 5,000 feet the gigantic trees of the great northwestern forest are clearly visible. Dr. H. S. Gannett, of the United States Geological Survey, has found that the Olympic range is 6,150 feet in elevation, but there are many peaks from 7,000 to 8,000 feet. The Olympic range is a rugged hill and in the valleys is very remarkable. Below the elevations of 5,000 feet the gigantic trees of the great northwestern forest are clearly visible. Dr. H. S. Gannett, of the United States Geological Survey, has found that the Olympic range is 6,150 feet in elevation, but there are many peaks from 7,000 to 8,000 feet. The Olympic range is a rugged hill and in the valleys is very remarkable. Below the elevations of 5,000 feet the gigantic trees of the great northwestern forest are clearly visible. Dr. H. S. Gannett, of the United States Geological Survey, has found that the Olympic range is 6,150 feet in elevation, but there are many peaks from 7,000 to 8,000 feet. The Olympic range is a rugged hill and in the valleys is very remarkable. Below the elevations of 5,000 feet the gigantic trees of the great northwestern forest are clearly visible. Dr. H. S. Gannett, of the United States Geological Survey, has found that the Olympic range is 6,150 feet in elevation, but there are many peaks from 7,000 to 8,000 feet. The Olympic range is a rugged hill and in the valleys is very remarkable. Below the elevations of 5,000 feet the gigantic trees of the great northwestern forest are clearly visible. Dr. H. S. Gannett, of the United States Geological Survey, has found that the Olympic range is 6,150 feet in elevation, but there are many peaks from 7,000 to 8,000 feet. The Olympic range is a rugged hill and in the valleys is very remarkable. Below the elevations of 5,000 feet the gigantic trees of the great northwestern forest are clearly visible. Dr. H. S. Gannett, of the United States Geological Survey, has found that the Olympic range is 6,150 feet in elevation, but there are many peaks from 7,000 to 8,000 feet. The Olympic range is a rugged hill and in the valleys is very remarkable. Below the elevations of 5,000 feet the gigantic trees of the great northwestern forest are clearly visible. Dr. H. S. Gannett, of the United States Geological Survey, has found that the Olympic range is 6,150 feet in elevation, but there are many peaks from 7,000 to 8,000 feet. The Olympic range is a rugged hill and in the valleys is very remarkable. Below the elevations of 5,000 feet the gigantic trees of the great northwestern forest are clearly visible. Dr. H. S. Gannett, of the United States Geological Survey, has found that the Olympic range is 6,150 feet in elevation, but there are many peaks from 7,000 to 8,000 feet. The Olympic range is a rugged hill and in the valleys is very remarkable. Below the elevations of 5,000 feet the gigantic trees of the great northwestern forest are clearly visible. Dr. H. S. Gannett, of the United States Geological Survey, has found that the Olympic range is 6,150 feet in elevation, but there are many peaks from 7,000 to 8,000 feet. The Olympic range is a rugged hill and in the valleys is very remarkable. Below the elevations of 5,000 feet the gigantic trees of the great northwestern forest are clearly visible. Dr. H. S. Gannett, of the United States Geological Survey, has found that the Olympic range is 6,150 feet in elevation, but there are many peaks from 7,000 to 8,000 feet. The Olympic range is a rugged hill and in the valleys is very remarkable. Below the elevations of 5,000 feet the gigantic trees of the great northwestern forest are clearly visible. Dr. H. S. Gannett, of the United States Geological Survey, has found that the Olympic range is 6,150 feet in elevation, but there are many peaks from 7,000 to 8,000 feet. The Olympic range is a rugged hill and in the valleys is very remarkable. Below the elevations of 5,000 feet the gigantic trees of the great northwestern forest are clearly visible. Dr. H. S. Gannett, of the United States Geological Survey, has found that the Olympic range is 6,150 feet in elevation, but there are many peaks from 7,000 to 8,000 feet. The Olympic range is a rugged hill and in the valleys is very remarkable. Below the elevations of 5,000 feet the gigantic trees of the great northwestern forest are clearly visible. Dr. H. S. Gannett, of the United States Geological Survey, has found that the Olympic range is 6,150 feet in elevation, but there are many peaks from 7,000 to 8,000 feet. The Olympic range is a rugged hill and in the valleys is very remarkable. Below the elevations of 5,000 feet the gigantic trees of the great northwestern forest are clearly visible. Dr. H. S. Gannett, of the United States Geological Survey, has found that the Olympic range is 6,150 feet in elevation, but there are many peaks from 7,000 to 8,000 feet. The Olympic range is a rugged hill and in the valleys is very remarkable. Below the elevations of 5,000 feet the gigantic trees of the great northwestern forest are clearly visible. Dr. H. S. Gannett, of the United States Geological Survey, has found that the Olympic range is 6,150 feet in elevation, but there are many peaks from 7,000 to 8,000 feet. The Olympic range is a rugged hill and in the valleys is very remarkable. Below the elevations of 5,000 feet the gigantic trees of the great northwestern forest are clearly visible. Dr. H. S. Gannett, of the United States Geological Survey, has found that the Olympic range is 6,150 feet in elevation, but there are many peaks from 7,000 to 8,000 feet. The Olympic range is a rugged hill and in the valleys is very remarkable. Below the elevations of 5,000 feet the gigantic trees of the great northwestern forest are clearly visible. Dr. H. S. Gannett, of the United States Geological Survey, has found that the Olympic range is 6,150 feet in elevation, but there are many peaks from 7,000 to 8,000 feet. The Olympic range is a rugged hill and in the valleys is very remarkable. Below the elevations of 5,000 feet the gigantic trees of the great northwestern forest are clearly visible. Dr. H. S. Gannett, of the United States Geological Survey, has found that the Olympic range is 6,150 feet in elevation, but there are many peaks from 7,000 to 8,000 feet. The Olympic range is a rugged hill and in the valleys is very remarkable. Below the elevations of 5,000 feet the gigantic trees of the great northwestern forest are clearly visible. Dr. H. S. Gannett, of the United States Geological Survey, has found that the Olympic range is 6,150 feet in elevation, but there are many peaks from 7,000 to 8,000 feet. The Olympic range is a rugged hill and in the valleys is very remarkable. Below the elevations of 5,000 feet the gigantic trees of the great northwestern forest are clearly visible. Dr. H. S. Gannett, of the United States Geological Survey, has found that the Olympic range is 6,150 feet in elevation, but there are many peaks from 7,000 to 8,000 feet. The Olympic range is a rugged hill and in the valleys is very remarkable. Below the elevations of 5,000 feet the gigantic trees of the great northwestern forest are clearly visible. Dr. H. S. Gannett, of the United States Geological Survey, has found that the Olympic range is 6,150 feet in elevation, but there are many peaks from 7,000 to 8,000 feet. The Olympic range is a rugged hill and in the valleys is very remarkable. Below the elevations of 5,000 feet the gigantic trees of the great northwestern forest are clearly visible. Dr. H. S. Gannett, of the United States Geological Survey, has found that the Olympic range is 6,150 feet in elevation, but there are many peaks from 7,000 to 8,000 feet. The Olympic range is a rugged hill and in the valleys is very remarkable. Below the elevations of 5,000 feet the gigantic trees of the great northwestern forest are clearly visible. Dr. H. S. Gannett, of the United States Geological Survey, has found that the Olympic range is 6,150 feet in elevation, but there are many peaks from 7,000 to 8,000 feet. The Olympic range is a rugged hill and in the valleys is very remarkable. Below the elevations of 5,000 feet the gigantic trees of the great northwestern forest are clearly visible. Dr. H. S. Gannett, of the United States Geological Survey, has found that the Olympic range is 6,150 feet in elevation, but there are many peaks from 7,000 to 8,000 feet. The Olympic range is a rugged hill and in the valleys is very remarkable. Below the elevations of 5,000 feet the gigantic trees of the great northwestern forest are clearly visible. Dr. H. S. Gannett, of the United States Geological Survey, has found that the Olympic range is 6,150 feet in elevation, but there are many peaks from 7,000 to 8,000 feet. The Olympic range is a rugged hill and in the valleys is very remarkable. Below the elevations of 5,000 feet the gigantic trees of the great northwestern forest are clearly visible. Dr. H. S. Gannett, of the United States Geological Survey, has found that the Olympic range is 6,150 feet in elevation, but there are many peaks from 7,000 to 8,000 feet. The Olympic range is a rugged hill and in the valleys is very remarkable. Below the elevations of 5,000 feet the gigantic trees of the great northwestern forest are clearly visible. Dr. H. S. Gannett, of the United States Geological Survey, has found that the Olympic range is 6,150 feet in elevation, but there are many peaks from 7,000 to 8,000 feet. The Olympic range is a rugged hill and in the valleys is very remarkable. Below the elevations of 5,000 feet the gigantic trees of the great northwestern forest are clearly visible. Dr. H. S. Gannett, of the United States Geological Survey, has found that the Olympic range is 6,150 feet in elevation, but there are many peaks from 7,000 to 8,000 feet. The Olympic range is a rugged hill and in the valleys is very remarkable. Below the elevations of 5,000 feet the gigantic trees of the great northwestern forest are clearly visible. Dr. H. S. Gannett, of the United States Geological Survey, has found that the Olympic range is 6,150 feet in elevation, but there are many peaks from 7,000 to 8,000 feet. The Olympic range is a rugged hill and in the valleys is very remarkable. Below the elevations of 5,000 feet the gigantic trees of the great northwestern forest are clearly visible. Dr. H. S. Gannett, of the United States Geological Survey, has found that the Olympic range is 6,150 feet in elevation, but there are many peaks from 7,000 to 8,000 feet. The Olympic range is a rugged hill and in the valleys is very remarkable. Below the elevations of 5,000 feet the gigantic trees of the great northwestern forest are clearly visible. Dr. H. S. Gannett, of the United States Geological Survey, has found that the Olympic range is 6,150 feet in elevation, but there are many peaks from 7,000 to 8,000 feet. The Olympic range is a rugged hill and in the valleys is very remarkable. Below the elevations of 5,000 feet the gigantic trees of the great northwestern forest are clearly visible. Dr. H. S. Gannett, of the United States Geological Survey, has found that the Olympic range is 6,150 feet in elevation, but there are many peaks from 7,000 to 8,000 feet. The Olympic range is a rugged hill and in the valleys is very remarkable. Below the elevations of 5,000 feet the gigantic trees of the great northwestern forest are clearly visible. Dr. H. S. Gannett, of the United States Geological Survey, has found that the Olympic range is 6,150 feet in elevation, but there are many peaks from 7,000 to 8,000 feet. The Olympic range is a rugged hill and in the valleys is very remarkable. Below the elevations of 5,000 feet the gigantic trees of the great northwestern forest are clearly visible. Dr. H. S. Gannett, of the United States Geological Survey, has found that the Olympic range is 6,150 feet in elevation, but there are many peaks from 7,000 to 8,000 feet. The Olympic range is a rugged hill and in the valleys is very remarkable. Below the elevations of 5,000 feet the gigantic trees of the great northwestern forest are clearly visible. Dr. H. S. Gannett, of the United States Geological Survey, has found that the Olympic range is 6,150 feet in elevation, but there are many peaks from 7,000 to 8,000 feet. The Olympic range is a rugged hill and in the valleys is very remarkable. Below the elevations of 5,000 feet the gigantic trees of the great northwestern forest are clearly visible. Dr. H. S. Gannett, of the United States Geological Survey, has found that the Olympic range is 6,150 feet in elevation, but there are many peaks from 7,000 to 8,000 feet. The Olympic range is a rugged hill and in the valleys is very remarkable. Below the elevations of 5,000 feet the gigantic trees of the great northwestern forest are clearly visible. Dr. H. S. Gannett, of the United States Geological Survey, has found that the Olympic range is 6,150 feet in elevation, but there are many peaks from 7,000 to 8,000 feet. The Olympic range is a rugged hill and in the valleys is very remarkable. Below the elevations of 5,000 feet the gigantic trees of the great northwestern forest are clearly visible. Dr. H. S. Gannett, of the United States Geological Survey, has found that the Olympic range is 6,150 feet in elevation, but there are many peaks from 7,000 to 8,000 feet. The Olympic range is a rugged hill and in the valleys is very remarkable. Below the elevations of 5,000 feet the gigantic trees of the great northwestern forest are clearly visible. Dr. H. S. Gannett, of the United States Geological Survey, has found that the Olympic range is 6,150 feet in elevation, but there are many peaks from 7,000 to 8,000 feet. The Olympic range is a rugged hill and in the valleys is very remarkable. Below the elevations of 5,000 feet the gigantic trees of the great northwestern forest are clearly visible. Dr. H. S. Gannett, of the United States Geological Survey, has found that the Olympic range is 6,150 feet in elevation, but there are many peaks from 7,000 to 8,000 feet. The Olympic range is a rugged hill and in the valleys is very remarkable. Below the elevations of 5,000 feet the gigantic trees of the great northwestern forest are clearly visible. Dr. H. S. Gannett, of the United States Geological Survey, has found that the Olympic range is 6,150 feet in elevation, but there are many peaks from 7,000 to 8,000 feet. The Olympic range is a rugged hill and in the valleys is very remarkable. Below the elevations of 5,000 feet the gigantic trees of the great northwestern forest are clearly visible. Dr. H. S. Gannett, of the United States Geological Survey, has found that the Olympic range is 6,150 feet in elevation, but there are many peaks from 7,000 to 8,000 feet. The Olympic