

PERSONALS AND OTHERWISE.

Mrs. B. B. Filer spent part of the week in town.

Miss Frances Skinner is enjoying the week at her brother's.

Don't forget, it will happen Apr. 11th and 12th,—the Minstrels.

Mrs. H. R. Monfort and children were expected home yesterday.

Not "better than the best," but "as good." Minstrels, Apr. 11th and 12th.

A score of English pheasants were liberated in this vicinity, the other day.

Arthur Lobley and his friend Claude Gale were up from Atlantic over Sunday.

Mr. and Mrs. Stuart Whiffen are to occupy the Joslyn home, on Central Avenue.

W. L. Black's store was treated with white paint, inside and out, improving its appearance.

Rev. and Mrs. H. P. Hoskins spent part of this week at their former home, Reading, Pa.

Remember, the proceeds of the Civic Club Minstrels will be for the beautifying of School Park.

The X. Y. Z. Club were lavishly entertained by the Misses Ella and Elizabeth Hoyle, Tuesday eve'g.

Preaching at the Universalist Church to-morrow, at 11.00 a. m. and 7.30 p. m. Sunday School at noon.

Rev. Oliver Lee has been appointed to the Elwood Circuit, and Rev. J. A. Naylor to that of Winslow and Elm.

To-morrow will be the golden wedding anniversary of Dr. and Mrs. N. L. Willard. More about it next week.

Mr. Waples walks carefully, just now, because of a strained back. He tried to lift too heavy a load, last Monday.

Adjourned meeting of Town Council next Monday night. The sidewalk question will occupy much attention.

A lively thunder storm visited this section early on Wednesday morning. The lightning was brilliant, the thunder peals heavy.

Mrs. Harry Smith came down from the city on Tuesday, and spent the afternoon with a circle of friends at the home of Mrs. W. A. French.

Rev. J. C. Lee, D. D., will be the speaker at the Universalist Church next Thursday evening at 7.45. Subject, "The Map of Human Life."

Dr. J. C. Bitler and his bride returned on Monday night from their honeymoon trip to Bermuda. They had fine weather, and enjoyed every day of it.

Mr. and Mrs. John H. Marshall have returned from Red Bank to their daughter's, at Hammonton Park. They were accompanied by Mr. Geo. C. Hurley.

St. Mark's Church. "Passion Sunday." Rev. R. G. Osborne, of Philadelphia, will have charge of the services at 10.30. Sunday School at 12.00 m.

Councilman Godfrey, of the Red Cross Pharmacy, has an automobile, but hasn't mastered it yet. It is of a novel pattern, but is said to be a speedy car.

The Postmaster-General has decided to order rural mail carriers to keep watch for forest fires, and when one is seen to send word to the nearest fire warden.

Mr. Reuben Mawson died on Thursday, March 14th, at his home on Central Avenue, Hammonton, aged 71 years. Funeral services on Monday; burial in Greenmount Cemetery.

Charles Marcellus Jackson made his debut early last Monday morning, March 18. His parents, Mr. and Mrs. Ernest M. Jackson, of Philadelphia, are receiving many congratulations.

We congratulate our friends of the M. R. Church, and the community as well, on the return of Pastor W. L. Shaw for one more year. This was earnestly desired, and we are well pleased.

It pays to advertise in the South Jersey Republican; so say Messrs. Bassett & Weller. They received, this week, a request for a copy of their catalogue from Budapest. Many are not aware that their home paper encircles the globe.

Mrs. Frank Horn and her son Walter, of Atlantic City, spent Thursday and Friday with her parents and brother-in-law, Mr. Chas. Hoffman, who has recently moved from Salem, and occupies the John Roller property, on Egg Harbor Road.

The staff of our High School paper, "The Blue and White," are to put out a large year book for the Commencement issue,—eighty pages, handsomely gotten up. The price will be 50 cents, and they ask every friend of the school to send in orders for copies, payable on delivery.

Last week Friday was a wet day. Rain began falling about six o'clock, and continued all day with little intermission,—a veritable pour-down. Two and sixty-seven hundredths inches is the official measurement in Hammonton, and is said to exceed any recorded precipitation for thirty years.

Do you eat? Spiritual nourishment waiting at the Presbyterian services to-morrow. Theme, 10.30 a. m., "What's your relation to Christ?" Study of God's Word at noon. At 6.45, Miss Wilson will address the C. E. Society on the "Saloon and its allies." The hour of evening worship is 7.30; theme, "The strong hearted."

On Friday afternoon next, 29th, a tea will be held at the residence of Capt. C. D. Loveland, for the benefit of the Ladies' Aid Society of the M. E. Church. Between 3.30 and 5.30, either tea or cocoa will be served, with cake, and a silver offering taken. Cakes will also be on sale, baked by some of the best cooks in town.

A number of Eastern Star ladies from Atlantic City attended a banquet given by the local lodge, last Wednesday evening. Degrees were conferred upon two candidates, and all enjoyed the occasion. Initiations were on the program. Mrs. Simon Wescott, of Atlantic City, was intending to come up that afternoon, with a daughter, when she was run over by a motor car, expiring in a few minutes.

Baptist Church, H. P. Hoskins, Pastor. Services 10.30 and 7.30; Bible School at 11.45; Junior C. E. at 3.00 o'clock; C. E. at 6.30. Pastor's morning sermon, "The Yoke," Matt. xi. 29-30. Evening, "One thing thou lackest," Mark x. 21. At the mid-week service, on Thursday evening, Dr. Samuel Neil, of Philadelphia, will speak on the missionary work of the Publication Society. A cordial welcome to all our services. "The homelike Church."

Mr. A. S. Faunce died very suddenly about two o'clock Wednesday morning,—apparently from heart trouble, aged about 70 years. He has resided in Hammonton and vicinity for several years, and made many friends by his genial personality. For some time he has been janitor of the Presbyterian Church, and did his work well. His remains will be taken to Pleasantville for burial, after preliminary services at his residence on Egg Harbor Road at 10.30 this morning. Members of the G. A. R. and P. O. S. of A., of which deceased was a member, will attend. A wife and young child survive him.



Every little girl will receive a **McCall's Doll Pattern** FREE! at two o'clock this Saturday afternoon. **Waples' Variety Store.**

Half-a-Cent-a-Word Advs.

No charge less than ten cents. Each figure, initial, and name counts one word.

Real Estate.

WANTED to Rent,—barn for wagon and horse. Address N. Republican Office.

MRS. Estabrook's house, on Bellevue Ave., is for rent. Inquire on the premises.

FARM Wanted,—to rent—few acres good soil, with buildings for poultry, and fruit. Privilege of buying if possible. J. S. Thompson, 25 N. 4th St., East Orange, N. J.

FOR Sale, 46 acre farm, with buildings and implements, right at Folsom station, railroad through the property. Plenty of fruit. Price low to quick buyer. J. E. McCullough, Folsom, N. J.

HOUSE for Rent,—six rooms and bath, unfurnished. Apply 418 N. 2nd St., Hammonton, N. J.

FOR Sale,—lots on Grape and Cherry Streets. Mrs. J. Harvey Hanson.

WANTED,—a farm, 20 to 100 acres, in Hammonton or Elwood. Cheap, for cash. Improved or unimproved. No agents. S. A. Woolbert, inland, Alabama.

FOR RENT,—fine homestead on Central Av. Twelve or fourteen rooms, steam heated, all conveniences. Price, \$20 per month. Heating and swimming. Address by letter "Residence," Republican Office.

HOUSE For Rent or Sale, on Central Ave. Apply to R. M. McKeone, Hammonton, N. J.

FOR Sale or Rent,—brick house on Twelfth Street,—eight rooms and bath. All conveniences. Sacrifice to quick buyer. J. C. Bitler, M.D.

FOR Sale or Rent. The house on Bellevue Avenue, recently vacated by T. C. Elvins. George Elvins.

Poultry, Supplies, and Live Stock.

WHITE Wyandotte and Single Comb Leghorn eggs for hatching. Drop-nest used. Mrs. M. Hildebrandt. Phone 1018.

GOLDEN Laced Wyandotte Eggs for sale, for hatching. John Chambers, 121 Maple Street.

WHITE Leghorn eggs for setting, 50 cents; also dual originators. Peter Erera, French Street.

FOR Sale. Young pigs, 3 months old, \$3 to \$5 each. S. C. White Leghorn hens and pullets, 65c each. 50 S. C. W. Plymouth Rock hens and pullets. J. E. McCullough, Folsom, N. J.

FOR SALE,—Black Minorca Eggs for hatching. John Roemer, Central Ave.

Specialties.

SATISFIED, is the expression of those who have tried Castor Brand Coffee and other goods, and had their gifts. Ask some of them. I am to see everyone, but for various reasons, unavoidable. It is impossible. I hope you want to call. If address postal, giving your address. Horace Jones, Local representative.

CLEANING Work Wanted,—bookkeeping, bookbinding, etc., by High School student. Address E. O. Box 188.

SEE the 33¢ pr ck. Save adv. of the Red Cross Pharmacy, running for two weeks.

SPECIAL, for a few days only,—18 in. corset cover embroidery, 10 c. per yard. Waples' Variety Store.

PLACE Your Order Now for Sweet Peas, Carnations, and potted plants at Visitors always welcome. Bassett & Weller's.

OUR Ready-to-Wear Men's Clothing for Spring and Summer is here and open for inspection. J. Huber's.

\$50 Reward! Notice! All persons are forbidden to take leaves or leaf mold from my place on Central Ave. The above reward will be paid for information leading to the arrest and conviction of anyone doing so. J. Sherron Patterson.

SPECIAL, at Red Cross. Opalo wrapped caramels for today (Saturday). Assorted, 10 in. and assorted nut, 33 c. per full pound.

Miscellaneous.

AT Kimmich's Candy Kitchen. Hand-made cream centers, 1 c. to 7 c. lbs. Wedecorate and name eggs when ordered, free.

CHILD'S Coats for sale. Apply at 117 Orchard Street.

DO You Carry Health and Accident Insurance? Why not? Every year our people lose thousands of dollars of earning power, through loss of life or disability every year. You may be next. Naturally, you want the best and safest policy on the market. We write you a policy covering disability from every known disease, all kinds of accidents and accidental death. Take a policy today; to-morrow may be too late. Let us send our representative to give you full details. Write immediately. Friesley & Niekrook, Insurance Dept., Elm, New Jersey.

CAPE May & Holman's Breeding Strawberry Plants for sale. Superior quality. Inquiries at J. E. Holman & Son, Middle Road, Hammonton.

WOMEN'S Shirts half-sold, 30 to 50 cents; children's, 20 to 30 cts.; men's, 50 to 80 c. 100 lbs. women, 30 c. men, 40 c. P. Hagen, Eckhardt Bldg., Third St.

PURE House's Strawberry Vines for sale at C. G. Rockwood's, 100, Third May 10, Edw. VanHise, Manager.

ALL Clothing bought or made here at 100% is guaranteed in every detail. No trouble to show goods. Chas. Huber.

HOLERS For Sale, cheap. Also, without blackberry plants. J. H. Tompkins, Blue Anchor.

WIDE, soft at private sale, pillows, bedsteads, and tableware. Mrs. L. E. Horne, 5 Third Street.

HEN Mince for sale. C. B. Nelson, Central Avenue.

SPRAYING Season. The best known remedy for killing weeds and preventing their growth in the lime sulphur solution. Sold at \$1.50 per 100 of cans. One barrel makes ten of the proper strength to spray. W. H. Parkhurst.

Wanted.

WANTED, show window to exhibit some of our gifts. Between Central, 11th and Central Aves. Address, Hammonton, Local representative for Cash & Flow.

\$25. REWARD will be paid for information that will convict the party who broke one of our show windows this week. Bank Brothers.

FAMILY Washday wanted. 220 Orchard Street.

WANTED, sewing, dressmaking, or housework. Mrs. M. H. Edwards.

Lost & Found.

Gold watch and pocket book, with initials G. B. A. P. Finder please leave with Reward. John French, Jr.

Bank Brothers.

Very careful preparations have been made to supply your needs in every department. We drew from the foremost and best makers for our supply, and are very enthusiastic about the new Spring merchandise with which the store is filled.

You can come to us with entire confidence in every article you purchase, no matter how low a price you pay. It will be a pleasant problem to choose from the big stocks of sparkling new things every department is offering. The figures at which goods are marked will set a record of low prices heretofore unknown at the opening of the season.

Special Bargains Gathered for Quick Selling.

Ladies' \$1 Wrappers at 59 cts. Black and white, blue and white and gray and white. All sizes.

Ladies' House Dresses at 59 cents. Black and white, gray and white, and blue and white. All sizes.

Dressing Sacques at 10 cents, value 19 cents

Stocking feet, three-pair for 5 cts; value 5 cts a pair

Ladies' Silk Hose at 15 cents; value 25 cts. Seconds.

50 cent Corset Covers at 25 cents

25 and 20 cent Embroidery at 10 cents a yard. Extra wide for dresses and corset covers.

Sheets at 30 cents; value 50 cents. Large size

Pillow Cases, special at 10 cents

Cotton and Woolen Dress Goods, Suitings, etc.

Everything new and distinctive in a wide range of weaves.

Percales at 10 c, and 12½ c,—36 inches wide

Calicoes, at 5 cents a yard; value, 7 c

Dress Ginghams, 9 c, 10 c, and 12½ cents a yard

Mohairs at 48 cents; value, 75 cents. In dark and light colors, and fancy stripes.

Voiles, in black and blue and white, at 45 cents, 75 cts, 95 cts, and up to \$1.95

Lancaster Apron Ginghams, at 5 cents

Serges, in white and striped, at 48 c, 95 cents, \$1.25 and \$1.50 a yd

Organdies, Dimities, and Batisties, 9½ c, 12½ c, 15 c, and 25 c

Silks, for making shirts, at 48 cents a yard

White Corduroy at \$1 a yard,—the newest material

Laces, Embroidery, and Trimmings.

You can choose from a score of different grades from the inexpensive trimmings at 2 cents a yard to the most elaborate all-over lace at \$3 a yard, and all prices between.

Cloak and Suit Department.

Brim-full with new and distinctive models. You can choose from trimmed and plain models,—straight and cut-away coats, of serge, homespuns, and whip-cords. Strictly man-tailored. Prices, \$7.50, \$10, \$12.50, \$15, and \$18,—a saving of two-fifty and three dollars on every suit.

Skirts at a price that the goods alone would cost,—in mohair, voile serge, and mixed goods. \$1.50 to \$5.

Special Ladies' Skirts at 75 c; value \$1.25

Special Ladies' Skirts at \$1.25; value \$2

Millinery.

This department was opened just one year ago, and has already won the patronage of many women. We like to encourage economy when buying Hats. The new models are here, every one different, no two alike. Prices, \$2.50, \$3, \$3.50, \$4, and \$5. The saving is worth taking advantage of.

Bank Brothers, Hammonton



YOUR customers get the goods for which they pay. You should be as sure of getting the money for the goods you sell.

Whether you do or not depends entirely on the system you use in conducting your business.

The old way was to depend on memory and habit.

With our new system, you depend on machinery, which enforces accuracy and stops mistakes in your store.

The National Cash Register will systematize your business so that you will be as sure of getting all your profits as your customers are of getting their goods.

It will pay you to investigate. Call or write.

The National Cash Register Co.,
Dayton, Ohio,
I. H. NEWMAN, Sales Agent,
1703 Atlantic Avenue, Atlantic City, N. J.



High Noon on the Lehigh

The Lehighway to Niagara Falls is the bride's way—a picturesque prelude to the grandeur of the Falls themselves. The comforts and luxuries of a Fifth Avenue hotel and a constantly shifting wonderland of mountains, valleys and streams. As pretty a first page to the honeymoon as a bridegroom and bride could select.

Black Diamond Express

At High Noon from New York 12:30 p.m. from Philadelphia

Three other fast trains each day. Look up the timetable to this historic first station on the highway of married life. Luxurious Pullman car equipment—smooth, rock-ballast roadbed—automatic safety block signals—dining cars in consonance with the high class of the trains. And just as enjoyable to other folk. Connects at Buffalo with Grand Trunk for Chicago and the West.

Lehigh Valley Railroad

"The Field-Glass Route"

New York Ticket Office: 240 Broadway, 15th Street, New York, N. Y.
Philadelphia Ticket Office: 211 Market Street, Philadelphia, Pa.
Atlantic City Ticket Office: 1000 Chestnut Street, Atlantic City, Pa.
Franklin Hotel Ticket Office: 1000 Franklin Avenue, Atlantic City, Pa.

South Jersey Republican
Entered in Hamilton Post-Office as second-class matter by
HOYT & SON, PUBLISHERS
Orville E. Hoyt, Publisher
Subscription Price: \$1.50 per year, \$1.00 in Atlantic County. Three cents per copy.
On sale at office, and at King's News Room
Advertising Rates on Application. Local Phone—532, 671, 1071.

That New Normal School.

Voters who attended the Annual School Meeting, on Tuesday, were unanimously in favor of making an effort to locate in Hammonton the new State Normal School for which our Legislature has made provision. One man at once offered to donate five acres of land, favorably situated, and stated that fifteen acres adjoining, belonging to another party, could be bought at a reasonable figure.

From our point of view, this is the ideal place for the State School. Midway between eastern and western borders of the state, with good railroad facilities to every point of the compass; with plenty of good land to be obtained; in a section unrivaled for healthfulness; with an abundant supply of the finest water; with a beautiful lake within easy reach, for boating, bathing or skating, in season, we know of no place offering better advantages.

We have good schools here, churches of all denominations, a population of five thousand people, some well-to-do, many workers, stores and markets to supply every want.

It is sincerely hoped that our Board of Education will at once take up the matter with the State authorities, leaving nothing undone which will further our claim, calling upon business men, farmers and others to aid them.

Do it now!

Sunday, Monday, and Tuesday, this week, were lovely days, bright with sunshine, mercury reaching sixty degrees. Wednesday dawned cloudy, but the sun brought through later. Toward night, a chill struck the air, and cold rain fell after sundown. Thursday was wet and cold, the latter end of a genuine blizzard which raged through Iowa and nearby states.

Lack of faith in others is too often simply a reflection of your own faithlessness.

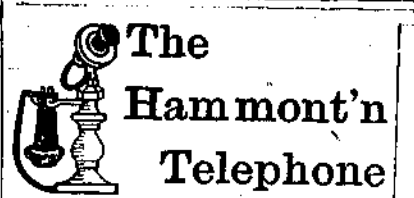
Easter hats will soon be ripe.

You cannot expect your son to be better than his father.

According to their annual report, the New Jersey State Prison has 1420 inmates, an increase of 27 over last year, and 314 increase over ten years ago. 155 were natives of this State, 522 from other states, and 540 foreign-born.

Signs of Spring: House-cleaning, flies, honey bees, blue birds, rag men, tramps, jumping-rope, marbles, and base-ball. Government seeds, lawn dressing, street scraping, bon fires, spring tonic, and that tired feeling.

Although the choice of Mr. Imhoff for member of the Board of Education was a good one, we regret that so able a one as Mrs. Spear should be retired. Experience has proven that two lady members are essential.



Hammont'n Telephone
Gives Best Service
and
Is the Cheapest!

A. J. RIDER,
President and Manager,
Office in Old Fellows Building.

The Peoples Bank
or
Hammonton, N. J.

Capital, \$50,000
Surplus and Undivided Profits, \$50,000

Three per cent interest paid on time deposits.
Two per cent interest allowed on demand accounts having daily balance of \$1000 or more.

Safe Deposit Boxes for Rent
M. L. JACKSON, President
W. J. HINTON, Vice-President
W. H. TILTON, Cashier.

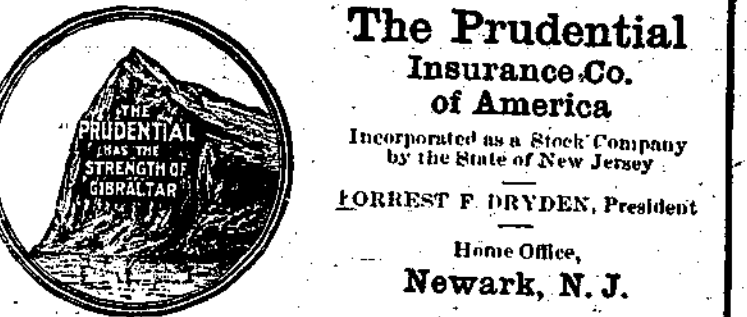
John Praseh, Jr.,
Funeral Director
and Embalmer
Twenty 8th, between railroad,
Local Phone 901, Bell 47-15
Hammonton, N. J.

THE PRUDENTIAL

Founded by John F. Dryden
Pioneer of Industrial Insurance in America.
Another Year of Wonderful Progress.
Annual Statement Dec. 31, 1911

Assets, over	259 Million Dollars
Liabilities, nearly	214 Million Dollars
Income in 1911, over	81 Million Dollars
Capital and Surplus, over	18 Million Dollars
Paid Policyholders in 1911, over	27 Million Dollars
Total paid Policyholders since organization, plus amount held at inst. to their credit, over	486 Million Dollars
Life Insurance issued and paid for in 1911, over	440 Million Dollars
Increase in paid-for Insurance in force, over	167 Million Dollars
The Company's Liabilities include: Policy Dividends payable in 1912, over	4 1/2 Million Dollars
Appropriated to Date to Participating Policies, and payable as Policy Dividends after 1912, over	24 1/2 Million Dollars

Number of Policies in Force
Over Ten Millions.
Paid for Insurance in Force
Over Two Billion Dollars.



The Prudential Insurance Co. of America
Incorporated as a Stock Company by the State of New Jersey
FORREST F. DRYDEN, President
Home Office,
Newark, N. J.

W. H. Bernhouse
Fire Insurance
Strongest Companies
Lowest Rates
Conveyancing,
Notary Public,
Commissioner of Deeds.
Hammonton.

Walter J. Vernier
Sanitary Plumb'r
and
Gas Fitting Contractor
Hammonton, N. J.
Local Phone 615

We have on exhibition the
BEST ROOFING PAPER
in America!

Come in and inspect the same,
and get our price. It will pay you.

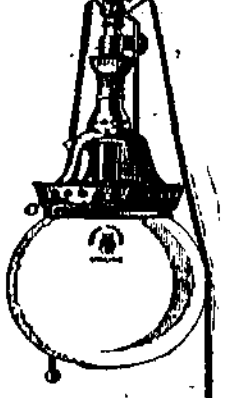
The HAMMONTON POULTRY ASSOCIATION.
Delivery Wednesday and Saturday.
Open Saturday evening.
In the Stockwell Building.
Local Phone No. 674.

Welsbach Economical Home Light

More Light For Less Money

Greatest Gas Lamp
Ever Invented
For Residence
Purposes

Eighty Candle-Power Illumination. Costs Only 1 1/2 Cents for 3 Hours Burning



We have secured the exclusive right in our territory to the latest and best gas light designed for use in the home. It is known as the Welsbach Economical Home Light and embodies the best ideas known to the largest manufacturers of incandescent gas lamps in the world. We have determined to offer this light to all of our patrons because we know from actual tests that it is better than any similar light we have ever had on sale before, and we handle only the best. We sincerely hope that every one of our customers will give this lamp a trial. We know it will give satisfaction, and we want satisfied customers. These lights will give you more illumination. They will burn only about one-half as much gas as the ordinary open flame burner. This means you will get better service and save expense.

Payment can be made in three monthly installments of 75 cents each, with your gas bills. If desired. Our agents will call on you and show the new light, if you are interested. It is a wonder. Put a Welsbach Economical Home Light in your home. It will make the evenings seem brighter.

Hammonton & Egg Harbor City Gas Company

33 1/2 % SAVE IT!

Two Weeks Introductory Sale.—Commencing March 22nd, ending April 7th.

We are offering the following list of preparations, some of which are used daily in nearly every family. These goods deserve a trial, at least. They are all either made by us, or the formulas are known to us. We guarantee each one of them to give good satisfaction, and will refund the money in any case if they prove unsatisfactory.

	Sale Price	Regular Price
Castoria, for babies	25	35
Malted Milk, A. D. S., medium size	17	25
Compound Syrup Sarsaparilla with Iodine of Potash, full pints, recognized as the best blood purifier	50	75
Compound Syrup of Hypophosphites, a tissue builder and general tonic, made from natural formula	50	75
Kidney Pills—Nylal, all for disorders of the kidneys, bladder and urinary tract	34	50
Buchu Compound	34	50
Stone Root Compound	67	1.00
Vegetable Compound, different from the other preparations for same ailments	67	1.00
Corn Cure—for corns, bunions, callous flesh	7	10
Benzo Cream, a good skin softener	17	25
Quinocarpine, a reliable hair tonic and scalp cleanser	17	25
Ter-camp Liniment, just strong enough not to blister	17	25
Dyspepsia Tablets—Red Cross—for indigestion & dyspepsia	34	50
Headache Wafers	17	25
Headache Tablets	17	25
Asthma Remedy. We recommend this as it has given good satisfaction	34	50
Pile Remedy, in suppository form	34	50
Grippe Tablets, for bad colds, grippe, etc.	17	25
Tooth Paste, with peroxide	17	25
Worm Wafers, Worm Tablets, Worm Syrup	17	25
Massage Cream—a 50 cent size for 25 cents	17	25
Bezema Ointment—all kinds of skin troubles	34	50
Itch Ointment	17	25
Syrup Figs	34	50
Whooping Cough Remedy	34	50
Iron Tonic Bitters—a good strong tonic	67	1.00
Mountain Herb Tea. You get your money's worth in this package of twelve different herbs	17	25
Celery Nervine, for nervousness, sleeplessness, etc.	67	1.00
Tasteless Cod Liver Oil, with hypophosphites	50	75
Throat Gargle	17	25
Cholera Specific, for cramps, etc.	17	25

RED CROSS PHARMACY

GUBER'S Special GUARANTEE!

Ready-to-Wear Clothing FOR MEN
For Spring and Summer Wear
Has Arrived, and is Open for Inspection

We have also prepared a large assortment of
Imported and Domestic All Wool Fabrics
And can make your Easter Suits to order on short notice.

All Men's Clothing bought or made here will be pressed free of charge.

All necessary alterations made free.

CHARLES GUBER
Clothier and Tailor, Hammonton

Announcement.
You are cordially invited to attend our Opening Display of
Spring and Summer Hats
Millinery and Trimming, for one week, beginning
Saturday, March 16th, to Saturday, March 23rd
AT GENDLER'S.

In the Dry Goods line we are better prepared than ever before.
We give yellow trading stamps.
Old Fellows' Building, Hammonton.

Business Men Organize.

Pursuant to a petition signed by many of our local business men, a meeting was held on Monday eve, in the Gas Company's office, to organize. The following officers were elected:

President, J. R. Imhoff
Vice-President, A. L. Jackson
Secretary, H. C. Doughty
Treasurer, C. I. Littlefield
The name "Hammonton Business Men's Association" was adopted, and Messrs. Robt. Steel, C. I. Littlefield, Wm. O. Hoyt, H. R. Monfort, H. C. Doughty, and E. F. Fry were appointed to draft a set of By-Laws. Directors and committees to be named later.

Annual School Meeting.

Called to order at three o'clock Tuesday afternoon, with good attendance. Dr. C. Burt was elected chairman; W. R. Seely secretary.

After the usual preliminaries, Dr. J. C. Bitter, J. R. Imhoff, Dr. F. C. Burt, Edwin Adams, M. C. Cappuccio, and Mrs. H. K. Spear were nominated for members of the Board of Education, three to be elected.

Dr. B. Berry and W. O. Hoyt were appointed tellers, with G. W. Russell as clerk. An hour later, they reported that Dr. Bitter had received 29 votes; Imhoff, 33; Mrs. Spear, 30; Dr. Burt, 45; Adams, 32; Cappuccio, 17 votes. Messrs. Burt, Adams and Imhoff declared elected for three years.

Resolutions were offered, authorizing a District tax, \$1500 for repairing and refurnishing buildings; \$500 for current expenses; \$500 for manual training; \$1200 to pay notes and interest. This was carried by a good vote.

A second resolution appropriated \$50 for shower bath at Central. This was defeated.

Dr. Cunningham moved that the next annual meeting be held at 7:30 p.m. Carried.

Voted, that hereafter the Board make their report to June 30th, the close of the legal school year.

A resolution was adopted, asking the State Board of Education to consider the advantages offered by Hammonton when selecting a site for a new Normal School.

Adjourned at 4:54.

Boys and Girls.

Have you seen the new bank? No? Well, then you have missed something. Come in and let's get acquainted. We want you to have one of these little savings banks. It counts the money, and you can see it grow. It will start you saving and keep you at it. Three per cent interest on time and savings accounts. Call to-day before they are all gone.

Hammonton Trust Company

Spring Novelties for Easter!

We are showing all that is newest and prettiest in
SPRING JEWELRY
Including Bar Pins, Belt Pins, Bracelets, Neck Chains, and Pendants.

A Diamond for an Easter Gift

Diamonds are especially appropriate, an emblem of Innocence. I have a carefully selected stock to choose from.

Come see them. You'll be surprised how low I have priced them.

Our line of Toilet Articles in
Pyralin Ivory is now complete.

Robert Steel, your Jeweler

Stoves—all kinds

Hardware,
Plumbing, Gas Fitting

H. McD. Little

W. J. HILLINGWORTH
Notary Public
Monmouth, Marlboro & Granite Work
Also repairing and lettering in counters neatly and satisfactorily done.
Rm. Harbor (1st) and Peach Street,
Hammonton, N. J.

GEORGE E. STROUSE
JUSTICE OF THE PEACE
NOTARY PUBLIC
Prompt attention paid to Collections.
Fire, Accident, Automobile, Plate Glass Insurance Office in Spear Building.

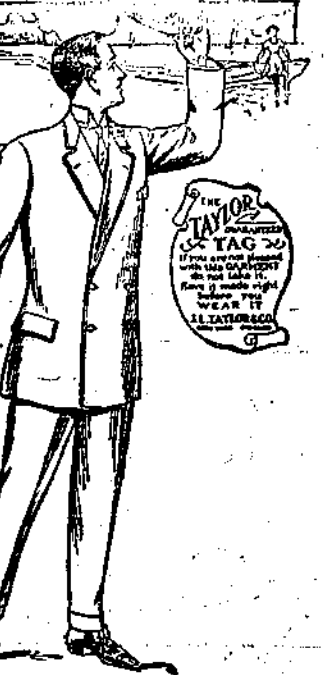
Sausage.

We wish to announce a reduction
in the price of our
Home-made Sausage.

For the balance of the season we will sell the
Sausage Meat for 16 cents per pound
Sausage in the casings for 18 cents

Commercial Printing

Jackson's Market.



Frisbie Collars
The Frisco
Unites the foremost style with the utmost wear. Its hand-made that's why FRISBIE COLLARS.



Your Boy Wants Style in His Blouses
Fitted out your boy with a supply of K&E L&OP Blouses. You will be surprised at the wonderful improvement they have over ordinary blouses. K&E L&OP Blouses have the famous L&OP which is found only in the K&E Brand. Every boy and every boy's mother will appreciate this L&OP. With the L&OP you can tie up the drawing just right when the blouse is first put on, and it does not need to be untied until it goes to the laundry. The drawing does not interfere with the buttoning; it can be unbuttoned and taken off without untying. This makes it easier for the boy to dress and undress and keeps the fulness of the blouse just right all the time. There is never any drawing ends hanging out of the K&E L&OP Blouse. The L&OP prevents it. K&E Blouses have the same fine style and workmanship as a man's shirt. They are made in handsome materials with hand-tornel collar and cuffs, reinforced shoulders and box pleat fronts. Every blouse is guaranteed. The colors are flat. Let us show you the many different styles.

Your boy won't be content with an old-time, ill-fitting garment. Nor do you want him to have that kind of a blouse. You want him to be smartly and neatly dressed, because it tends to give him habits of neatness and to take care of his appearance.

Every K&E L&OP Blouse is put up in a separate Parchment Envelope.

Blouses for Dress, \$1.00 and over
Blouses for School, 50c and over

W. L. BLACK

Special Offer.

Until April 1st, unless sold out before.

\$2 in Trees for \$1 in Cash.

10 Peach Trees,
3 best kinds, 1 to 2 feet.

5 Early Richman
Cherries, 2 to 3 feet.

Packed f. o. b.

West Jersey Nursery, Bridgeton, N. J.

Fire Insurance at Cost.

THE CUMBERLAND Mutual Fire Insurance Co.

Will insure your property at less cost than others. Reason: operating expenses light; no loading of premium for profits; sixty-seven years of satisfactory service. Cash surplus over \$100,000. For particulars, see

Wayland DePuy, Agt.,
Corner Second and Cherry Streets,
Hammonton, N. J.

The All Metal Coop

will save your

CHICKENS!

LOUSE
RAT
WEASEL
DOG
SKUNK
RAIN

Proof

Bottoms quickly detached for cleaning. For sale by

E. P. JOHNSON

Easton Av., New Brunswick, N. J.

Phone 1038-W

Ask for Descriptive Circular.



Lakeview GREEN-HOUSE

Central Ave., Hammonton, N. J.

Large assortment of
Palms, Ferns, House Plants,
Cut Flowers. Funeral Designs
in Fresh Flowers, Wax, or Metal.

WATKIS & NICHOLSON,
Florists and Landscape Gardeners.
Phone 1-W

A. H. Phillips Co.

Fire Insurance.

MONEY

Mortgage Loans.

Correspondence Solicited.
Bartlett Building,
Atlantic City, N. J.

"Insight Into Eyesight"



Your Eyes are
Your Most Valuable Possession
Do You Value Them?

J. R. HUNTER

Eye Specialist

214 Market Street
Philadelphia

We have a most excellent tissue in
booklet form, for cleaning glasses.
A postal to Department T
will bring you one.

DREER'S SEEDS PLANTS BULBS

To make your garden a success, you
will find an invaluable guide in
Dreer's Garden Book

An encyclopedia on gardening, of
200 pages, 1000 splendid photo-
graphs, 4 color plates and 8 duode-
cimo plates. Full directions given for
growing flowers, plants, bulbs, veg-
etables, lawn grass and farm seeds.
Call or Write Mailed Free

HENRY A. DREER

714 Chestnut St., Phila., Pa.

S. J. R. THREE MONTHS 25 Cts

Un-Claimed Letters.

The following letters remained
unclaimed for in the Hammonton
Post Office on Wednesday, Mar.
20, 1912:

A. J. Pagano Miss Milho Rital
Mrs. Jacques Martin J. Myers
Mr. D. Alonzo Mr. Rocco Stetola
Giuseppe Mauri

Persons calling for any of the
above will please state that it was
advertised. THOS. C. ELVINS,
Postmaster.

The Unemployed—An' don't yez want
to hire a man to work around the
house?

The Housekeeper—No, there's not
enough work to keep a man busy.
The Unemployed—Sure, it takes darn
little work to kape me busy.—Toledo
Blade.

The folks that on the farm abide
Are most insistent wishes—
Expect the farmer to provide
Romantic moonlight nights.
—Washington Herald.

"After I am gone the world that is
now so careless will learn what I have
accomplished." "I wouldn't let that
worry me; they can't arrest you then,
you know."—Houston Post.

The man who murmurs, "Isn't it hot?"
Is just the man who beats.
But he's second to the one who says,
"I never feel the heat."
—New York Sun.

Tourist—Is this guide a thoroughly
skillful climber?
Hotel Keeper—Well, he has lost two
parties of tourists off the mountain
side and each time has come off with-
out a scratch.—Toledo Blade.

She chose him out of all the crowd
Of men that came and went.
His voice was low, his tie was loud,
But she was well content.

The first man's education was
Perhaps more finished, and
Another's manners gave her cause
As being much more grand.

Another's garments fitted him;
Another's hair was curly;
Another's name was Arthur—Jim
Was chosen by this girlie.

And not for wealth and not for love
Was Jim by Mabel chosen—
But that he was the one man of
The whole lot that proposed!
—Boston Traveler.

Mrs. Exe—I can always tell when
my husband has been drinking the morn-
ing he kisses me.

Mrs. Wye—And I can always tell
when mine has been drinking by his
not kissing me.—Boston Transcript.

"It looks like peace," says William as he
turned to Cousin George.
"I guess we'll shut the foundry down and
cool the blazing forge."
"All right," said George. "That pleases
me. We'll let the fires go out."
"I wonder," said my lady France, "what
they're so thick about."
—Cleveland Plain Dealer.

"I hear your husband took you to
the baseball game yesterday. Did you
enjoy it?"
"No, I didn't care much for it. No-
body got married in the last inning."
Chicago Record-Herald.

I wonder, as my mind with counsel teases
For every class of man the world has
known.
Just why another's business always seems
Much easier to master than my own?
—Washington Star.

"That scientist is a coward!"
"How so?"
"He made the statement that
woman's foot was going larger, and
when I challenged him to name the
woman he refused."—Houston Post.

Elwood Country Club.

ELWOOD, N. J., Mar. 7, '12
MR. EDITOR: A few months
ago an effort was made to secure
a license to sell liquor in the for-
mer home of the late J. T. Irving.
This was checked, as every other
effort of this sort has been, by the
indignant protest of a large major-
ity of the respectable people of
Elwood. Foiled in this attempt,
the same parties, under the spec-
ious pretext of a "social club,"
are attempting to accomplish the
same object, viz: the selling of
liquor, under a different name.
Now it is not to be a Tavern, but
a Club. This club has been incor-
porated under the name of "The
Elwood Country Club." The in-
corporators are John D. Carver,
A. A. Palmer, Isaac N. Cramer,
Philip J. Fitzpatrick, and Edward
N. O'Donnell.

Carver is Justice of the Peace,
and has been a resident here for
a number of years; but Palmer,
Fitzpatrick and Cramer are stran-
gers to most of the Elwood people,
the two former having only resided
here a few months, while Cramer
lives in Atlantic City. O'Donnell
is a resident of Hammonton. That
such men should start a social
club in Elwood is most certainly
grotesque.

When liquor selling is the cause
of nearly all breaches of the peace,
it would seem to be a breach of
propriety for a Justice of the Peace
to encourage it. With O'Donnell
it is purely a business speculation;
a commercial transaction, seem-
ingly forgetful of the misery that has
come into many a home through
habits of intemperance.

As regards the other men, who
have quite recently come to live in
Elwood, it is most unfortunate and
greatly to be regretted, that they
did not, before permitting their
names to be used to further an en-
terprise for the selling of intoxica-
ting liquor, first acquaint them-
selves with the strong and consci-
entious conviction of the religious
people of the community against
a liquor saloon under any guise,
whether it be called a tavern or a
club. There can be no objection
to the opening of either one or the
other, or both, if liquor is not sold.
It is to be hoped that as the first
effort to secure a license to sell rum
failed, that this second attempt,
under a different name, will also
result in failure, and that all who
make their homes in Elwood will
unite with those who are striving
to make all homes safe by exclu-
ding that which destroys them.

MINOT S. MORGAN,
Pastor of Presbyterian Church.
RICHARD SMITH,
Pastor of M. E. Church.
C. W. MAURER,
All of Elwood.
Representing more than one hun-
dred others.

The executive committee of the
Lecture Association are looking
about for an extra entertainment
to add to the regular course—now
ended. If they find something
satisfactory, they will name an early
date. Season ticket holders will
be admitted without charge, of
course.

LEGAL NOTICES.

A SUPPLEMENT to an Ordinance entitled:
"An Ordinance Regarding the Licensing
of Inns and Taverns in the Town of Hammonton
to the Sale of Liquor." Passed August
14th, 1910.
Section 1. BE IT ORDAINED by the Town of
Hammonton in Council assembled that all
licenses granted under the provisions of the
ordinance to which this ordinance is a supple-
ment, shall date from the fifteenth day of May
of each year; provided however, that licenses
granted prior to the fifteenth day of May A. D.
1911 shall be granted from any date to the
next fifteenth day of May following upon
payment of a ratable proportion of the fees
prescribed in the second section of the ordi-
nance to which this ordinance is a supplement.
Section 2. And be it further ordained that
all applications for licenses, made from and
after the passage of this ordinance, shall be
made upon a blank to be furnished by the
Town Clerk of the Town of Hammonton; such
application, when made, shall be accompanied
by an additional fee of five dollars (\$5.00),
chargeable for the making of the said
application.
Section 3. That this ordinance shall take
effect immediately.
Introduced Feb. 14, 1912.
Signed: F. C. BURT, Mayor.
Attest: W. H. SEELY, Town Clerk.

SHERIFF'S SALE.

By virtue of a writ of fieri facias, to me di-
rected, issued out of the New Jersey Court of
Chancery, will be sold at public vendue on
FRIDAY, THE THIRD DAY OF MAY,
NINETEEN HUNDRED AND TWELVE,
at two o'clock in the afternoon of said day, at
the office of William H. Bernshouse, corner
Front and Sixth Streets, in the Town of
Hammonton, County of Atlantic and State of
New Jersey.

All those certain tracts or lots of land and
premises situate in the Town of Hammonton,
in the County of Atlantic and State of New
Jersey, bounded and described as follows:
No. 1—Beginning at the intersection of Main
and Basin Roads and running (1) Northeast-
erly to the middle of Basin Road eighty-
four feet to a point; thence (2) at right
angles to Basin Road Southeasterly forty
perches to a point; thence (3) parallel with
Basin Road Southeasterly to the middle of
Main Road; thence (4) along the middle of
Main Road Northwestwardly to the middle of
Basin Road; thence (5) along the middle of
Basin Road Northwestwardly to the middle of
Main Road; thence (6) along the middle of
Main Road Northwestwardly to the middle of
Basin Road; thence (7) at right angles to
Basin Road Northwestwardly to the middle of
Main Road; thence (8) along the middle of
Main Road Northwestwardly to the middle of
Basin Road; thence (9) along the middle of
Basin Road Northwestwardly to the middle of
Main Road; thence (10) along the middle of
Main Road Northwestwardly to the middle of
Basin Road; thence (11) along the middle of
Basin Road Northwestwardly to the middle of
Main Road; thence (12) along the middle of
Main Road Northwestwardly to the middle of
Basin Road; thence (13) along the middle of
Basin Road Northwestwardly to the middle of
Main Road; thence (14) along the middle of
Main Road Northwestwardly to the middle of
Basin Road; thence (15) along the middle of
Basin Road Northwestwardly to the middle of
Main Road; thence (16) along the middle of
Main Road Northwestwardly to the middle of
Basin Road; thence (17) along the middle of
Basin Road Northwestwardly to the middle of
Main Road; thence (18) along the middle of
Main Road Northwestwardly to the middle of
Basin Road; thence (19) along the middle of
Basin Road Northwestwardly to the middle of
Main Road; thence (20) along the middle of
Main Road Northwestwardly to the middle of
Basin Road; thence (21) along the middle of
Basin Road Northwestwardly to the middle of
Main Road; thence (22) along the middle of
Main Road Northwestwardly to the middle of
Basin Road; thence (23) along the middle of
Basin Road Northwestwardly to the middle of
Main Road; thence (24) along the middle of
Main Road Northwestwardly to the middle of
Basin Road; thence (25) along the middle of
Basin Road Northwestwardly to the middle of
Main Road; thence (26) along the middle of
Main Road Northwestwardly to the middle of
Basin Road; thence (27) along the middle of
Basin Road Northwestwardly to the middle of
Main Road; thence (28) along the middle of
Main Road Northwestwardly to the middle of
Basin Road; thence (29) along the middle of
Basin Road Northwestwardly to the middle of
Main Road; thence (30) along the middle of
Main Road Northwestwardly to the middle of
Basin Road; thence (31) along the middle of
Basin Road Northwestwardly to the middle of
Main Road; thence (32) along the middle of
Main Road Northwestwardly to the middle of
Basin Road; thence (33) along the middle of
Basin Road Northwestwardly to the middle of
Main Road; thence (34) along the middle of
Main Road Northwestwardly to the middle of
Basin Road; thence (35) along the middle of
Basin Road Northwestwardly to the middle of
Main Road; thence (36) along the middle of
Main Road Northwestwardly to the middle of
Basin Road; thence (37) along the middle of
Basin Road Northwestwardly to the middle of
Main Road; thence (38) along the middle of
Main Road Northwestwardly to the middle of
Basin Road; thence (39) along the middle of
Basin Road Northwestwardly to the middle of
Main Road; thence (40) along the middle of
Main Road Northwestwardly to the middle of
Basin Road; thence (41) along the middle of
Basin Road Northwestwardly to the middle of
Main Road; thence (42) along the middle of
Main Road Northwestwardly to the middle of
Basin Road; thence (43) along the middle of
Basin Road Northwestwardly to the middle of
Main Road; thence (44) along the middle of
Main Road Northwestwardly to the middle of
Basin Road; thence (45) along the middle of
Basin Road Northwestwardly to the middle of
Main Road; thence (46) along the middle of
Main Road Northwestwardly to the middle of
Basin Road; thence (47) along the middle of
Basin Road Northwestwardly to the middle of
Main Road; thence (48) along the middle of
Main Road Northwestwardly to the middle of
Basin Road; thence (49) along the middle of
Basin Road Northwestwardly to the middle of
Main Road; thence (50) along the middle of
Main Road Northwestwardly to the middle of
Basin Road; thence (51) along the middle of
Basin Road Northwestwardly to the middle of
Main Road; thence (52) along the middle of
Main Road Northwestwardly to the middle of
Basin Road; thence (53) along the middle of
Basin Road Northwestwardly to the middle of
Main Road; thence (54) along the middle of
Main Road Northwestwardly to the middle of
Basin Road; thence (55) along the middle of
Basin Road Northwestwardly to the middle of
Main Road; thence (56) along the middle of
Main Road Northwestwardly to the middle of
Basin Road; thence (57) along the middle of
Basin Road Northwestwardly to the middle of
Main Road; thence (58) along the middle of
Main Road Northwestwardly to the middle of
Basin Road; thence (59) along the middle of
Basin Road Northwestwardly to the middle of
Main Road; thence (60) along the middle of
Main Road Northwestwardly to the middle of
Basin Road; thence (61) along the middle of
Basin Road Northwestwardly to the middle of
Main Road; thence (62) along the middle of
Main Road Northwestwardly to the middle of
Basin Road; thence (63) along the middle of
Basin Road Northwestwardly to the middle of
Main Road; thence (64) along the middle of
Main Road Northwestwardly to the middle of
Basin Road; thence (65) along the middle of
Basin Road Northwestwardly to the middle of
Main Road; thence (66) along the middle of
Main Road Northwestwardly to the middle of
Basin Road; thence (67) along the middle of
Basin Road Northwestwardly to the middle of
Main Road; thence (68) along the middle of
Main Road Northwestwardly to the middle of
Basin Road; thence (69) along the middle of
Basin Road Northwestwardly to the middle of
Main Road; thence (70) along the middle of
Main Road Northwestwardly to the middle of
Basin Road; thence (71) along the middle of
Basin Road Northwestwardly to the middle of
Main Road; thence (72) along the middle of
Main Road Northwestwardly to the middle of
Basin Road; thence (73) along the middle of
Basin Road Northwestwardly to the middle of
Main Road; thence (74) along the middle of
Main Road Northwestwardly to the middle of
Basin Road; thence (75) along the middle of
Basin Road Northwestwardly to the middle of
Main Road; thence (76) along the middle of
Main Road Northwestwardly to the middle of
Basin Road; thence (77) along the middle of
Basin Road Northwestwardly to the middle of
Main Road; thence (78) along the middle of
Main Road Northwestwardly to the middle of
Basin Road; thence (79) along the middle of
Basin Road Northwestwardly to the middle of
Main Road; thence (80) along the middle of
Main Road Northwestwardly to the middle of
Basin Road; thence (81) along the middle of
Basin Road Northwestwardly to the middle of
Main Road; thence (82) along the middle of
Main Road Northwestwardly to the middle of
Basin Road; thence (83) along the middle of
Basin Road Northwestwardly to the middle of
Main Road; thence (84) along the middle of
Main Road Northwestwardly to the middle of
Basin Road; thence (85) along the middle of
Basin Road Northwestwardly to the middle of
Main Road; thence (86) along the middle of
Main Road Northwestwardly to the middle of
Basin Road; thence (87) along the middle of
Basin Road Northwestwardly to the middle of
Main Road; thence (88) along the middle of
Main Road Northwestwardly to the middle of
Basin Road; thence (89) along the middle of
Basin Road Northwestwardly to the middle of
Main Road; thence (90) along the middle of
Main Road Northwestwardly to the middle of
Basin Road; thence (91) along the middle of
Basin Road Northwestwardly to the middle of
Main Road; thence (92) along the middle of
Main Road Northwestwardly to the middle of
Basin Road; thence (93) along the middle of
Basin Road Northwestwardly to the middle of
Main Road; thence (94) along the middle of
Main Road Northwestwardly to the middle of
Basin Road; thence (95) along the middle of
Basin Road Northwestwardly to the middle of
Main Road; thence (96) along the middle of
Main Road Northwestwardly to the middle of
Basin Road; thence (97) along the middle of
Basin Road Northwestwardly to the middle of
Main Road; thence (98) along the middle of
Main Road Northwestwardly to the middle of
Basin Road; thence (99) along the middle of
Basin Road Northwestwardly to the middle of
Main Road; thence (100) along the middle of
Main Road Northwestwardly to the middle of
Basin Road; thence (101) along the middle of
Basin Road Northwestwardly to the middle of
Main Road; thence (102) along the middle of
Main Road Northwestwardly to the middle of
Basin Road; thence (103) along the middle of
Basin Road Northwestwardly to the middle of
Main Road; thence (104) along the middle of
Main Road Northwestwardly to the middle of
Basin Road; thence (105) along the middle of
Basin Road Northwestwardly to the middle of
Main Road; thence (106) along the middle of
Main Road Northwestwardly to the middle of
Basin Road; thence (107) along the middle of
Basin Road Northwestwardly to the middle of
Main Road; thence (108) along the middle of
Main Road Northwestwardly to the middle of
Basin Road; thence (109) along the middle of
Basin Road Northwestwardly to the middle of
Main Road; thence (110) along the middle of
Main Road Northwestwardly to the middle of
Basin Road; thence (111) along the middle of
Basin Road Northwestwardly to the middle of
Main Road; thence (112) along the middle of
Main Road Northwestwardly to the middle of
Basin Road; thence (113) along the middle of
Basin Road Northwestwardly to the middle of
Main Road; thence (114) along the middle of
Main Road Northwestwardly to the middle of
Basin Road; thence (115) along the middle of
Basin Road Northwestwardly to the middle of
Main Road; thence (116) along the middle of
Main Road Northwestwardly to the middle of
Basin Road; thence (117) along the middle of
Basin Road Northwestwardly to the middle of
Main Road; thence (118) along the middle of
Main Road Northwestwardly to the middle of
Basin Road; thence (119) along the middle of
Basin Road Northwestwardly to the middle of
Main Road; thence (120) along the middle of
Main Road Northwestwardly to the middle of
Basin Road; thence (121) along the middle of
Basin Road Northwestwardly to the middle of
Main Road; thence (122) along the middle of
Main Road Northwestwardly to the middle of
Basin Road; thence (123) along the middle of
Basin Road Northwestwardly to the middle of
Main Road; thence (124) along the middle of
Main Road Northwestwardly to the middle of
Basin Road; thence (125) along the middle of
Basin Road Northwestwardly to the middle of
Main Road; thence (126) along the middle of
Main Road Northwestwardly to the middle of
Basin Road; thence (127) along the middle of
Basin Road Northwestwardly to the middle of
Main Road; thence (128) along the middle of
Main Road Northwestwardly to the middle of
Basin Road; thence (129) along the middle of
Basin Road Northwestwardly to the middle of
Main Road; thence (130) along the middle of
Main Road Northwestwardly to the middle of
Basin Road; thence (131) along the middle of
Basin Road Northwestwardly to the middle of
Main Road; thence (132) along the middle of
Main Road Northwestwardly to the middle of
Basin Road; thence (133) along the middle of
Basin Road Northwestwardly to the middle of
Main Road; thence (134) along the middle of
Main Road Northwestwardly to the middle of
Basin Road; thence (135) along the middle of
Basin Road Northwestwardly to the middle of
Main Road; thence (136) along the middle of
Main Road Northwestwardly to the middle of
Basin Road; thence (137) along the middle of
Basin Road Northwestwardly to the middle of
Main Road; thence (138) along the middle of
Main Road Northwestwardly to the middle of
Basin Road; thence (139) along the middle of
Basin Road Northwestwardly to the middle of
Main Road; thence (140) along the middle of
Main Road Northwestwardly to the middle of
Basin Road; thence (141) along the middle of
Basin Road Northwestwardly to the middle of
Main Road; thence (142) along the middle of
Main Road Northwestwardly to the middle of
Basin Road; thence (143) along the middle of
Basin Road Northwestwardly to the middle of
Main Road; thence (144) along the middle of
Main Road Northwestwardly to the middle of
Basin Road; thence (145) along the middle of
Basin Road Northwestwardly to the middle of
Main Road; thence (146) along the middle of
Main Road Northwestwardly to the middle of
Basin Road; thence (147) along the middle of
Basin Road Northwestwardly to the middle of
Main Road; thence (148) along the middle of
Main Road Northwestwardly to the middle of
Basin Road; thence (149) along the middle of
Basin Road Northwestwardly to the middle of
Main Road; thence (150) along the middle of
Main Road Northwestwardly to the middle of
Basin Road; thence (151) along the middle of
Basin Road Northwestwardly to the middle of
Main Road; thence (152) along the middle of
Main Road Northwestwardly to the middle of
Basin Road; thence (153) along the middle of
Basin Road Northwestwardly to the middle of
Main Road; thence (154) along the middle of
Main Road Northwestwardly to the middle of
Basin Road; thence (155) along the middle of
Basin Road Northwestwardly to the middle of
Main Road; thence (156) along the middle of
Main Road Northwestwardly to the middle of
Basin Road; thence (157) along the middle of
Basin Road Northwestwardly to the middle of
Main Road; thence (158) along the middle of
Main Road Northwestwardly to the middle of
Basin Road; thence (159) along the middle of
Basin Road Northwestwardly to the middle of
Main Road; thence (160) along the middle of
Main Road Northwestwardly to the middle of
Basin Road; thence (161) along the middle of
Basin Road Northwestwardly to the middle of
Main Road; thence (162) along the middle of
Main Road Northwestwardly to the middle of
Basin Road; thence (163) along the middle of
Basin Road Northwestwardly to the middle of
Main Road; thence (164) along the middle of
Main Road Northwestwardly to the middle of
Basin Road; thence (165) along the middle of
Basin Road Northwestwardly to the middle of
Main Road; thence (166) along the middle of
Main Road Northwestwardly to the middle of
Basin Road; thence (167) along the middle of
Basin Road Northwestwardly to the middle of
Main Road; thence (168) along the middle of
Main Road Northwestwardly to the middle of
Basin Road; thence (169) along the middle of
Basin Road Northwestwardly to the middle of
Main Road; thence (170) along the middle of
Main Road Northwestwardly to the middle of
Basin Road; thence (171) along the middle of
Basin Road Northwestwardly to the middle of
Main Road; thence (172) along the middle of
Main Road Northwestwardly to the middle of
Basin Road; thence (173) along the middle of
Basin Road Northwestwardly to the middle of
Main Road; thence (174) along the middle of
Main Road Northwestwardly to the middle of
Basin Road; thence (175) along the middle of
Basin Road Northwestwardly to the middle of
Main Road; thence (176) along the middle of
Main Road Northwestwardly to the middle of
Basin Road; thence (177) along the middle of
Basin Road Northwestwardly to the middle of
Main Road; thence (178) along the middle of
Main Road Northwestwardly to the middle of
Basin Road; thence (179) along the middle of
Basin Road Northwestwardly to the middle of
Main Road; thence (180) along the middle of
Main Road Northwestwardly to the middle of
Basin Road; thence (181) along the middle of
Basin Road Northwestwardly to the middle of
Main Road; thence (182) along the middle of
Main Road Northwestwardly to the middle of
Basin Road; thence (183) along the middle of
Basin Road Northwestwardly to the middle of
Main Road; thence (184) along the middle of
Main Road Northwestwardly to the middle of
Basin Road; thence (185) along the middle of
Basin Road Northwestwardly to the middle of
Main Road; thence (186) along the middle of
Main Road Northwestwardly to the middle of
Basin Road; thence (187) along the middle of
Basin Road Northwestwardly to the middle of
Main Road; thence (188) along the middle of
Main Road Northwestwardly to the middle of
Basin Road; thence (189) along the middle of
Basin Road Northwestwardly to the middle of
Main Road; thence (190) along the middle of
Main Road Northwestwardly to the middle of
Basin Road; thence (191) along the middle of
Basin Road Northwestwardly to the middle of
Main Road; thence (192) along the middle of
Main Road Northwestwardly to the middle of
Basin Road; thence (193) along the middle of
Basin Road Northwestwardly to the middle of
Main Road; thence (194) along the middle of
Main Road Northwestwardly to the middle of
Basin Road; thence (195) along the middle of
Basin Road Northwestwardly to the middle of
Main Road; thence (196) along the middle of
Main Road Northwestwardly to the middle of
Basin Road; thence (197) along the middle of
Basin Road Northwestwardly to the middle of
Main Road; thence (198) along the middle of
Main Road Northwestwardly to the middle of
Basin Road; thence (199) along the middle of
Basin Road Northwestwardly to the middle of
Main Road; thence (200) along the middle of
Main Road Northwestwardly to the middle of
Basin Road; thence (201) along the middle of
Basin Road Northwestwardly to the middle of
Main Road; thence (202) along the middle of
Main Road Northwestwardly to the middle of
Basin Road; thence (203) along the middle of
Basin Road Northwestwardly to the middle of
Main Road; thence (204) along the middle of
Main Road Northwestwardly to the middle of
Basin Road; thence (205) along the middle of
Basin Road Northwestwardly to the middle of
Main Road; thence (206) along the middle of
Main Road Northwestwardly to the middle of
Basin Road; thence (207) along the middle of
Basin Road Northwestwardly to the middle of
Main Road; thence (208) along the middle of
Main Road Northwestwardly to the middle of
Basin Road; thence (209) along the middle of
Basin Road Northwestwardly to the middle of
Main Road; thence (210) along the middle of
Main Road Northwestwardly to the middle of
Basin Road; thence (211) along the middle of
Basin Road Northwestwardly to the middle of
Main Road; thence (212) along the middle of
Main Road Northwestwardly to the middle of
Basin Road; thence (213) along the middle of
Basin Road Northwestwardly to the middle of
Main Road; thence (214) along the middle of
Main Road Northwestwardly to the middle of
Basin Road; thence (215) along the middle of
Basin Road Northwestwardly to the middle of
Main Road; thence (216) along the middle of
Main Road Northwestwardly to the middle of
Basin Road; thence (217) along the middle of
Basin Road Northwestwardly to the middle of
Main Road; thence (218) along the middle of
Main Road Northwestwardly to the middle of
Basin Road; thence (219) along the middle of
Basin Road Northwestwardly to the middle of
Main Road; thence (220) along the middle of
Main Road Northwestwardly to the middle of
Basin Road; thence (221) along the middle of
Basin Road Northwestwardly to the middle of
Main Road; thence (222) along the middle of
Main Road Northwestwardly to the middle of
Basin Road; thence (223) along the middle of
Basin Road Northwestwardly to the middle of
Main Road; thence (224) along the middle of
Main Road Northwestwardly to the middle of
Basin Road; thence (225) along the middle of
Basin Road Northwestwardly to the middle of
Main Road; thence (226) along the middle of
Main Road Northwestwardly to the middle of
Basin Road; thence (227) along the middle of
Basin Road Northwestwardly to the middle of
Main Road; thence (228) along the middle of
Main Road Northwestwardly to the middle of
Basin Road; thence (229) along the middle of
Basin Road Northwestwardly to the middle of
Main Road; thence (230) along the middle of
Main Road Northwestwardly to the middle of
Basin Road; thence (231) along the middle of
Basin Road Northwestwardly to the middle of
Main Road; thence (232) along the middle of
Main Road Northwestwardly to the middle of
Basin Road; thence (233) along the middle of
Basin Road Northwestwardly to the middle of
Main Road; thence (234) along the middle of
Main Road Northwestwardly to the middle of
Basin Road; thence (235) along the middle of
Basin Road Northwestwardly to the middle of
Main Road; thence (236) along the middle of
Main Road Northwestwardly to the middle of
Basin Road; thence (237) along the middle of
Basin Road Northwestwardly to the middle of
Main Road; thence (238) along the middle of
Main Road Northwestwardly to the middle of
Basin Road; thence (239) along the middle of
Basin Road Northwestwardly to the middle of
Main Road; thence (240) along the middle of
Main Road Northwestwardly to the middle of
Basin Road; thence (241) along the middle of
Basin Road Northwestwardly to the middle of
Main Road; thence (242) along the middle of
Main Road Northwestwardly to the middle of
Basin Road; thence (243) along the middle of
Basin Road Northwestwardly to the middle of
Main Road; thence (244) along the middle of
Main Road Northwestwardly to the middle of
Basin Road; thence (245) along the middle of
Basin Road Northwestwardly to the middle of
Main Road; thence (246) along the middle of
Main Road Northwestwardly to the middle of
Basin Road; thence (247) along the middle of
Basin Road Northwestwardly to the middle of
Main Road; thence (248)