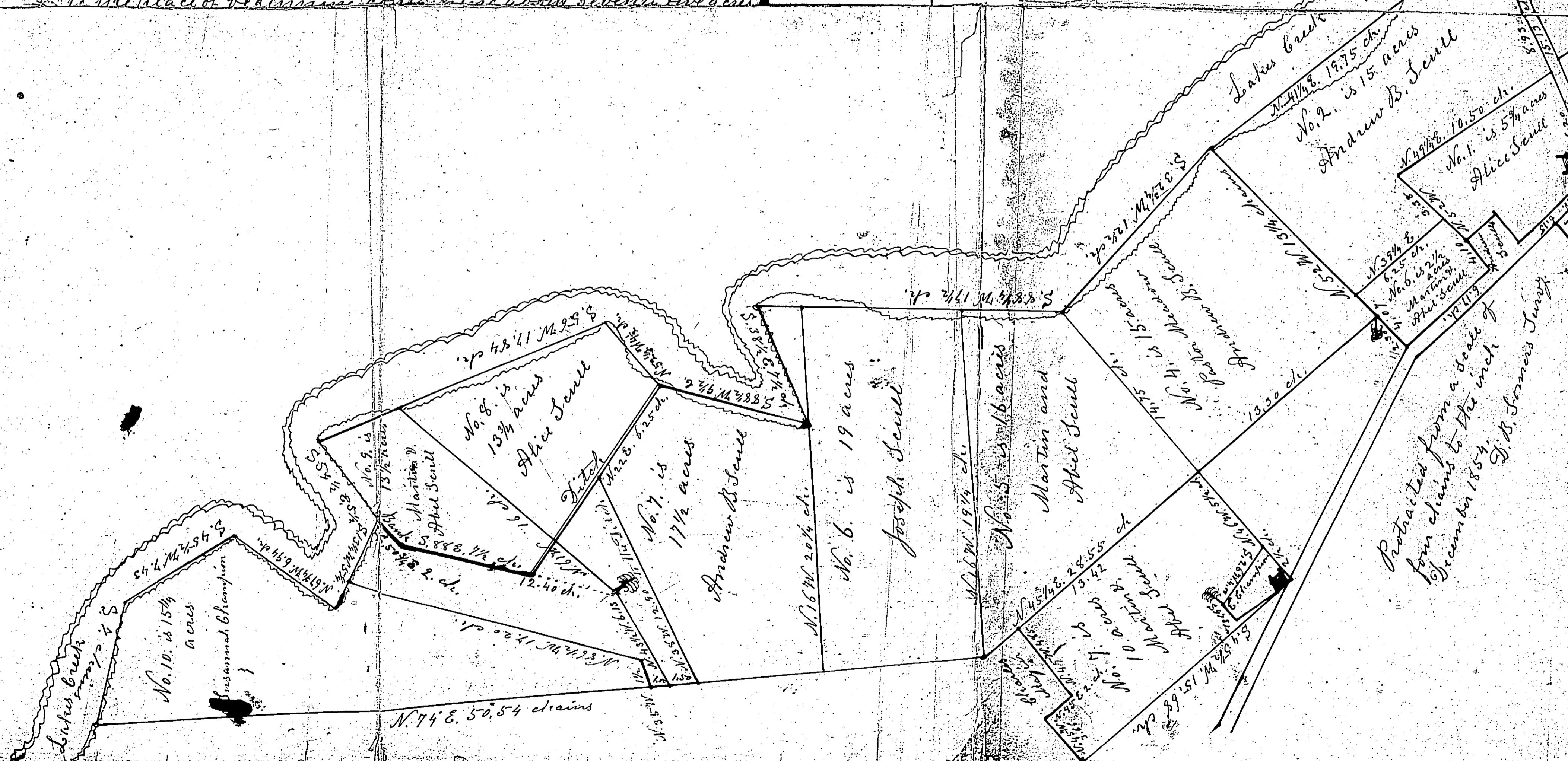


creek the several courses thereof to Robert Best - line but the
 general course - as follows, North sixty eight and a half degrees
 East three chains and fifty links to a stake (8) North thirty four
 and three quarters degrees East twelve chains and fifty links
 thence (9) North forty five and a half degrees East twelve
 chains and thirty eight links up to the line fence between
 Robert Best thence (10) North fifty and a half degrees West
 twenty one chains and seventy five links to a post shown
 by Robert Best as his corner thence (11) Northeast fifteen links
 (12) North forty seven and three quarter degrees West binding
 Washington Steelman's line twenty two chains to the creek
 (13) down the creek to the Bridge (14) South thirty one and a half
 degrees East in the road fifteen chains and sixty three links
 to the place of bearing a compass about seven or five acres



a half chains to another corner (5) North twelve and a half degrees
 East sixteen chains and seventy five links to another corner
 in the Branch (6) North forty one degrees East six chains to a
 stake thence (7) South eighty nine degrees West sixteen chains
 and eighty five links to another stake for a corner thence (8) North
 twenty one chains to a stake standing by the side of the road
 (9) South eighty four and a half degrees

Protracted from a scale of
 four chains to the inch of
 December 1854
 D. W. Jones Junr